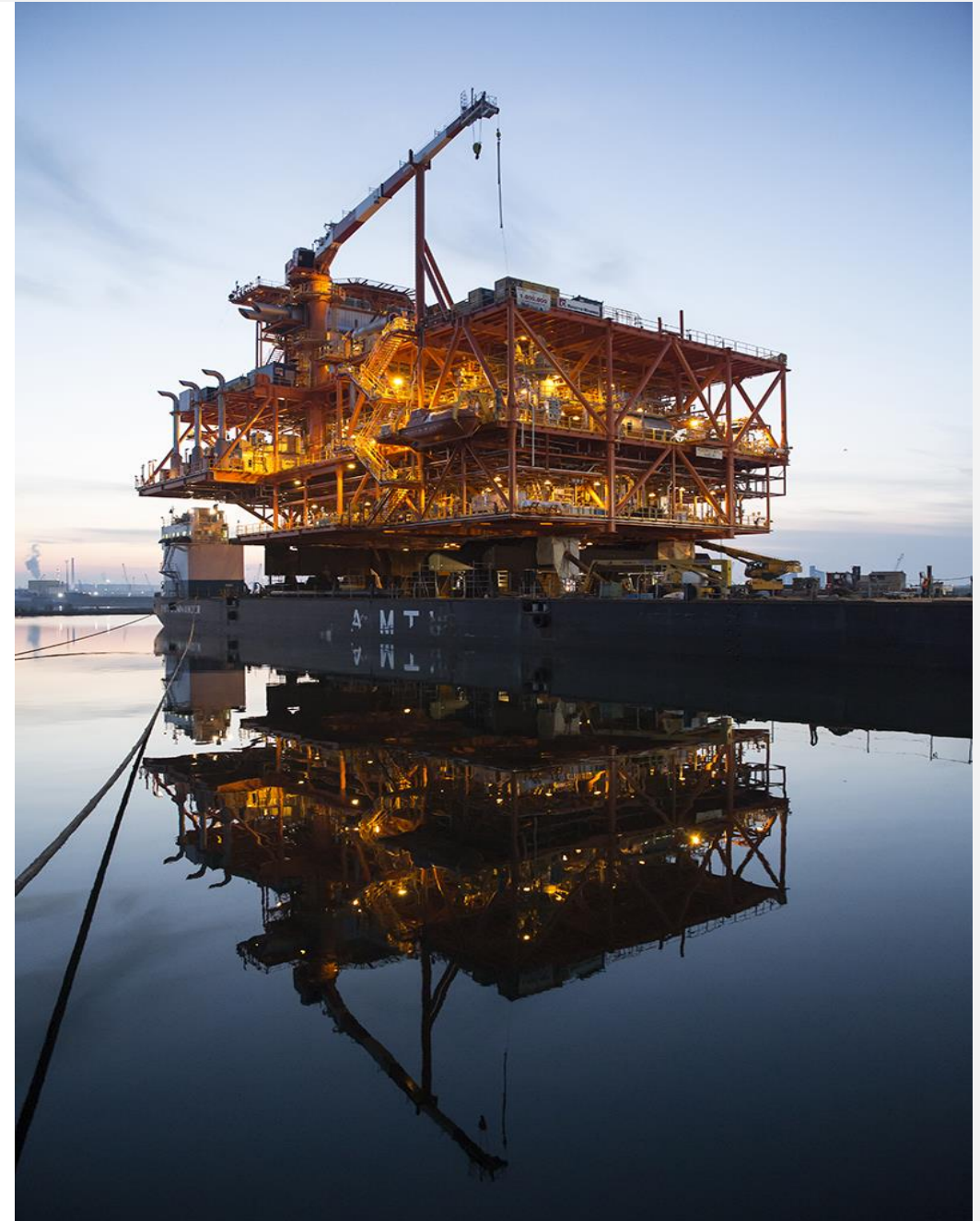




ENERGY MEETS REALITY

MAIN REFERENCES



BGUP – Bouri Gas Utilization Project

Work in progress

Client

Mellitah Oil & Gas

Location

Mediterranean Sea, 120 km north of Libya (Block NC-41)

Main contractor

Saipem S.p.A. Libyan Branch

Contract

EPCIC – Lump Sum

Award

August 2023

Ready for sail away /**Completion date**

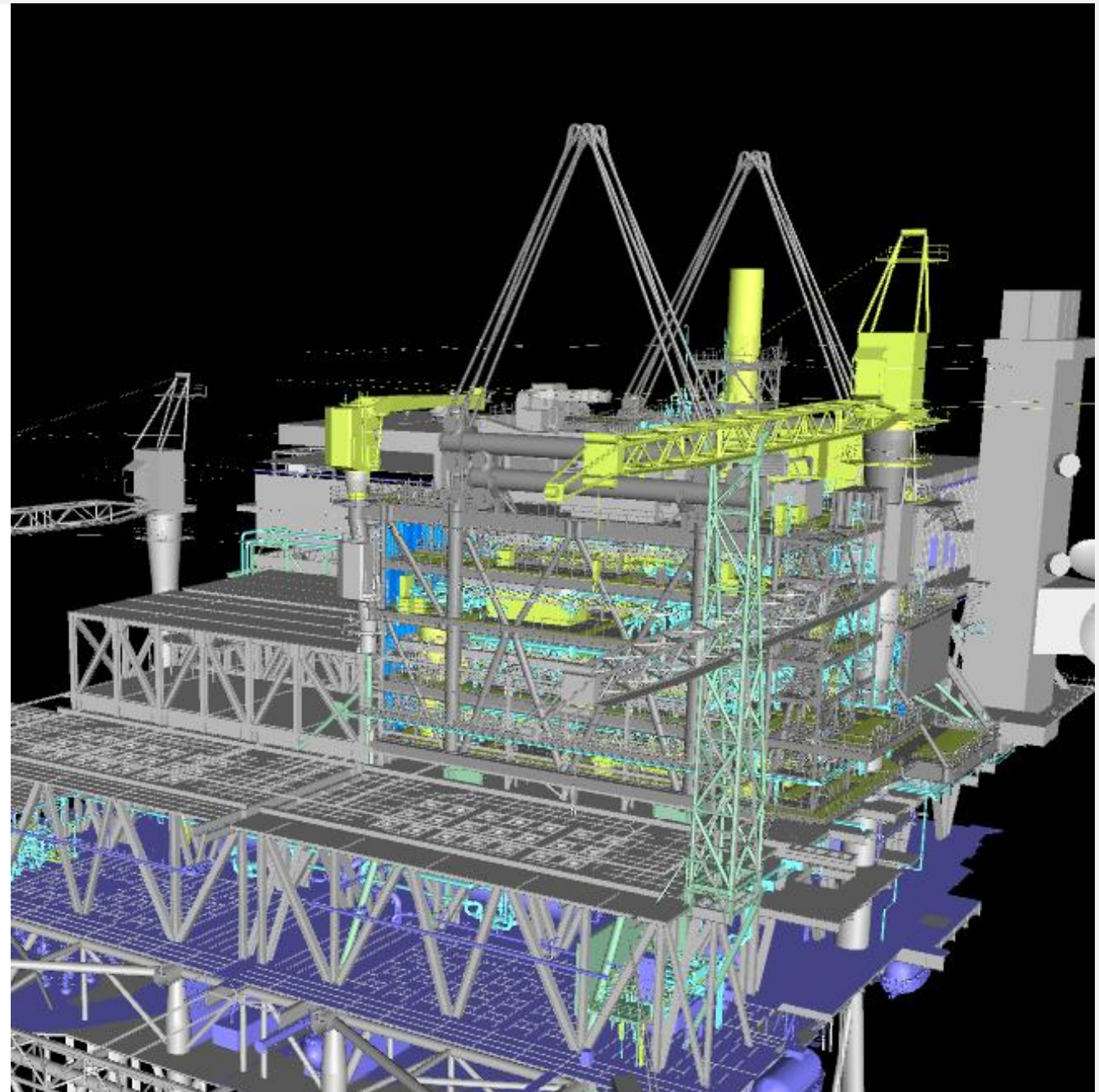
2025/2026

Scope of work

DP4: New Gas Recovery Module, pig traps, 14" & 10" risers, tie-ins, LQ/TR upgrade
DP3: Hang-off module, 14" riser, tie-ins
Sabratha: reconditioning of existing 10" facilities

Technical Data

GRM: 4600 t
Hang-off modules: 440 t
Brownfield: 430 t
Offshore campaign \approx 2 y



RAVENNA FSRU TERMINAL

Work in progress

Client

Snam FSRU Italia

Location

Adriatic Sea - off the coast of Ravenna, Italy

Main contractor

Consortium: Rosetti Marino S.p.A.,
Saipem S.p.A., Micoperi S.r.l.

Contract

EPCIC – Lump sum

Award

July 2023

Completion date

December 2024

Scope of work

Engineering, procurement,
construction, installation &
commissioning of a jacket,
topside, mooring dolphins,
gangways and foundation piles

Technical Data

Jacket (30m x 33m, H= 19m)

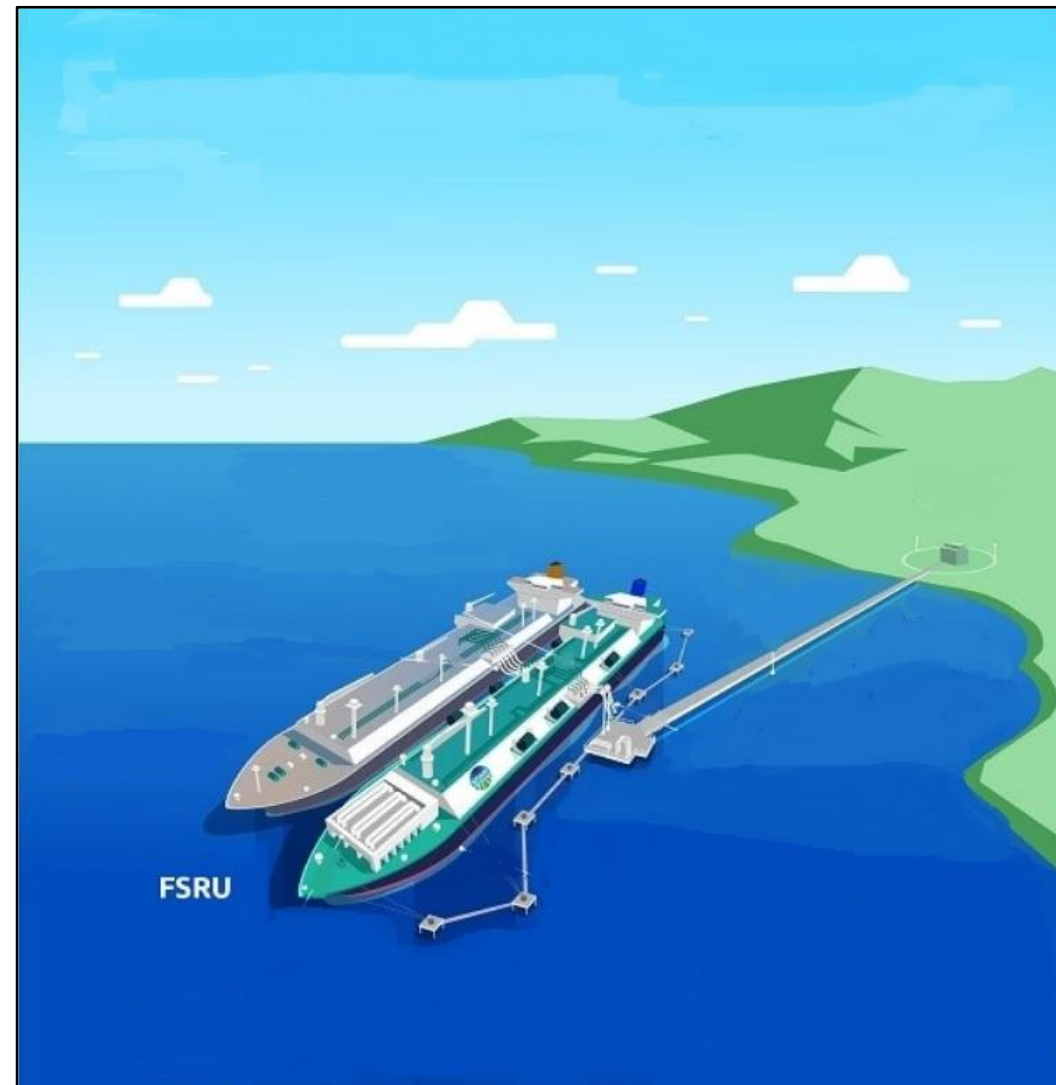
660 tons

Topside (48m x 54m) 1.660 tons

Gangways – 990 tons

Dolphins – 850 tons

Piles – 10.000 tons



BASELOAD POWER HUB

(H2 PRODUCTION, H2 BATTERY STORAGE, POWER MANAGEMENT SYSTEM FOR WIND FARMS, RENEWABLE POWER GENERATION ENHANCEMENT)

Work in progress

Client

CrossWind – joint venture between Shell (80%) and Eneco (20%)

Location

Hollandse Kust Noord offshore windfarm, 18.5 kilometres off the Dutch coast.

Main contractor

Rosetti Marino S.p.A.

Contract

EPCIC Lump sum

Award

10th July 2023

Completion date

14^h November 2025

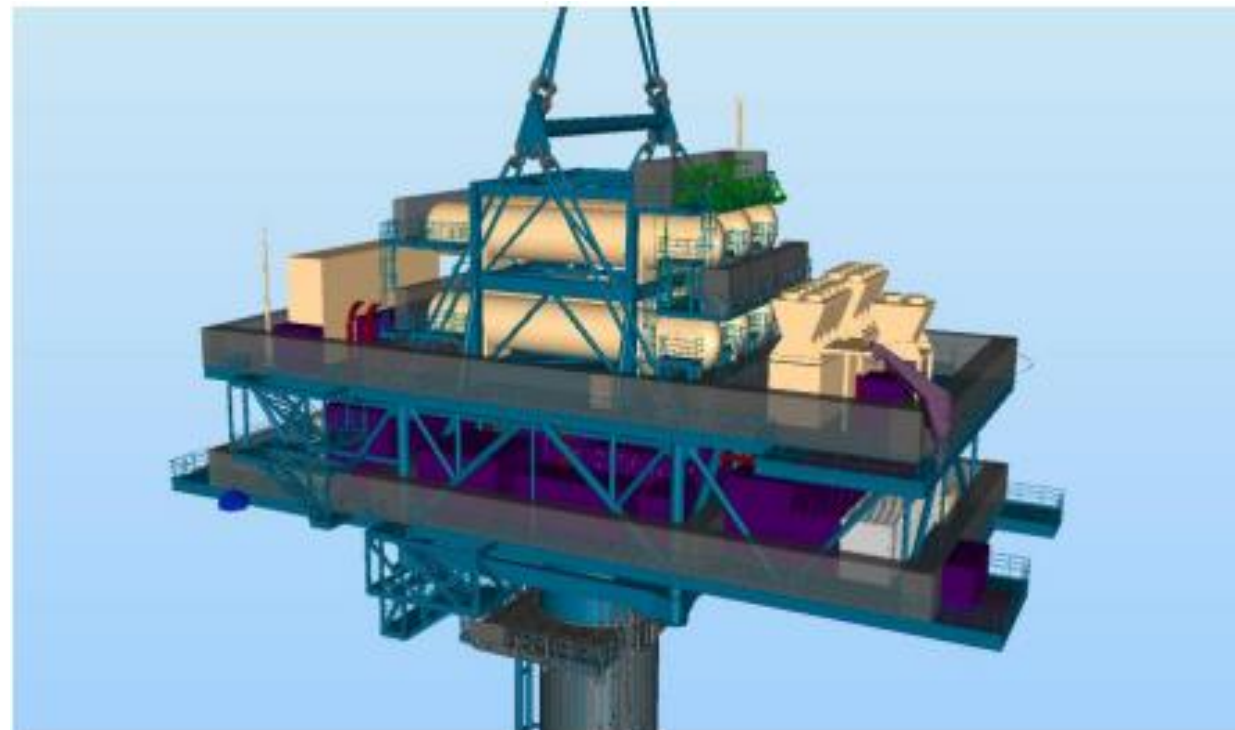
Scope of work

Detailed design, procurement of material and equipment, construction work, transport and installation at sea, commissioning and start-up of the platform.

Technical Data

Technologies to be deployed:

- 1 MWe/5 MWh lithium-ion BESS
- 2.5 MW electrolyser
- 1,200 kg of 30-40 barg H2 gas storage
- 1.0 MWe fuel cell
- Power Management System
- HV Switchgear 66kV
- Transformers 66/6.6 kV/ 480V
- Control System, F&G
- Water Treatment Plant



CAN/AN PRILLING TOWER EMISSION ABATEMENT PROJECT FOR YARA PLANT - Ravenna

Work in progress

Client
Yara Italia S.p.A.

Location
Ravenna (Italy)

Main contractor
Rosetti Marino S.p.A.

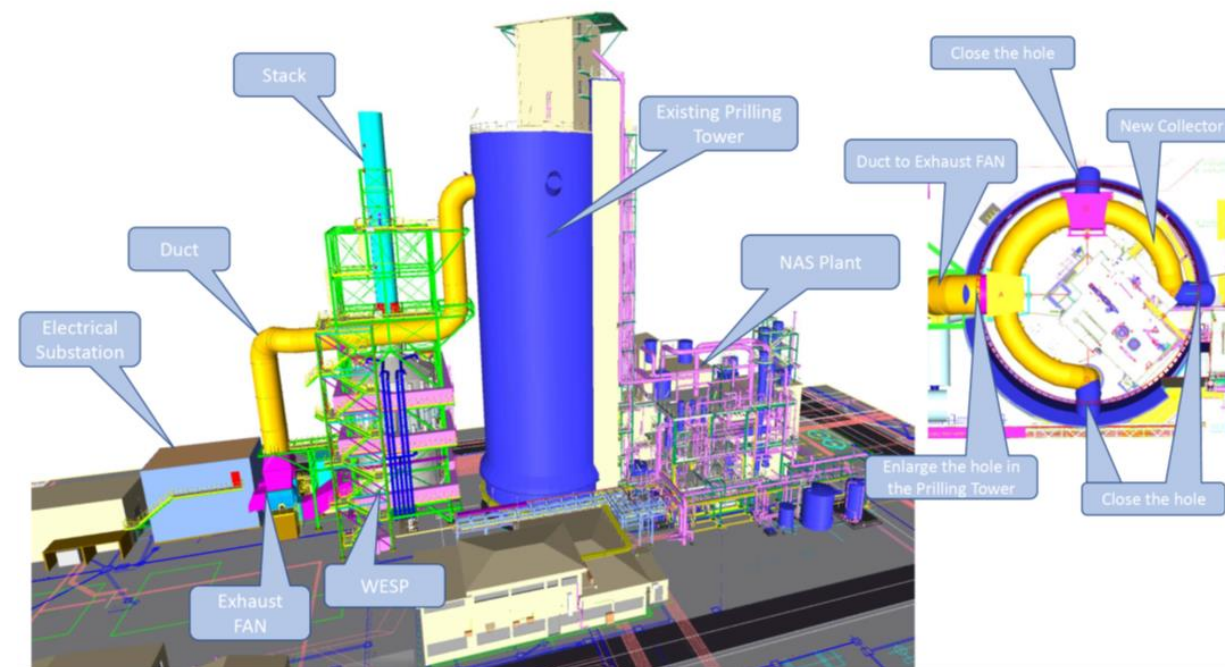
Contract
EPCm Services

Award
January 2023

Ready for Commissioning
Ottobre 2024

Scope of work
Engineering, Procurement and Construction management services (EPCm) for the execution of the CAN/AN Prilling Tower Emission Abatement Project

Technical Data
Piles: N. 68 (2000 M)
Concrete: 900 M³
Structures: 320 TON
Equipment: 50 TON
Piping, valves: 20,5 TON



NORDSEE II OFFSHORE WIND FARM JACKET

Work in progress

Client

Chantiers de L'Atlantique

Final client

RWE Renewables

Location

Germany - Offshore North Sea

Main contractor

Rosetti Marino S.p.A.

Contract

ePC / Provisional Sum

Award

July 2023

Ready for sail away

July 2025

Scope of work

Fabrication Engineering,
Procurement, Construction,
Mechanical Completion, Testing and
Load-out of one (1) jacket

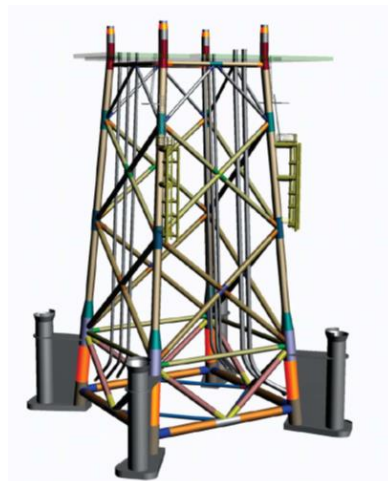
Technical Data

Four (4) legged Jacket:

- height: 60 m
- weight: 2.000 tons

Four (4) Piles:

- 72 m x 2.5m, thk = 50/90mm
- weight: 4 x 305 tons



GODEWIND 4 OFFSHORE WIND FARM TRANSITION PIECE

Work in progress

Client

Chantiers de L'Atlantique

Final client

RWE Renewables

Location

Germany – Offshore North Sea

Main contractor

Rosetti Marino S.p.A.

Contract

ePC / Provisional Sum

Award

September 2023

Ready for sail away

July 2025

Scope of work

Fabrication Engineering, Procurement,
Construction, Mechanical Completion,
Testing and Load-out of one (1)
transition piece

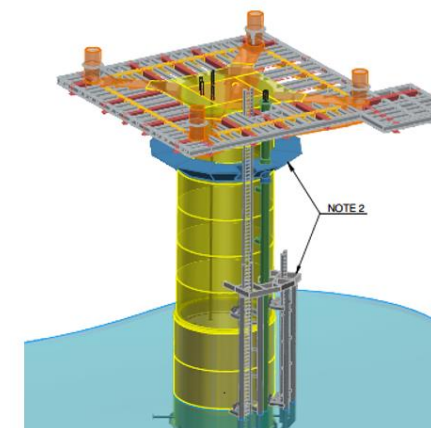
Technical Data

Height: 30 m

Main tube dia: 7.5 m (thk 75/85 mm)

Skirt dia: 7.85 m (thk 50/60 mm)

Footprint cellar deck (between axis):
15m x 15m (max 28,5 x23,5)



RATIONALIZATION OF THE RUBBER PRODUCTION FACILITIES FOR THE VERSALIS PLANT - Ravenna

Work in progress

Client

ENI Versalis SpA

Location

Ravenna (Italy)

Main contractor

Rosetti Marino S.p.A.

Contract

EPC/Lump sum

Award

March 2023

Ready for Commissioning

March 2024

Scope of work

Detail design, procurement, construction and pre-commissioning of onshore rubber material production plant (NEOCIS & SOL)

Technical Data

Piles: N. 586 (7.400 M)

Concrete: 4.076 M³

Structures: 670 TON

Equipment: 274 TON

Piping, valves: 323 TON

Passive Fire Protec.: 940 M²

Insulation: 2770 M²

Painting: 22.200 M²



LOW CARBON SOLUTIONS

Work in progress

Emitters

ENI Versalis, YARA, CABOT

Technical Providers

Baker Hughes - Rosetti Marino -
Giammarco Vetrocoke

Location

RAVENNA (2) and FERRARA (1)

Start date

October 2022

Expected completion date

Q4 2026

Technical Data

Total captured and stored CO₂:
700.000 tons/y

Project

Carbon Capture and Storage
(CCS) in Ravenna e Ferrara
Petrochemical Plants
consisting CO₂ capture plants,
collection network, final CO₂
compression and offshore
storage in depleted gas
reservoirs (ENI assets)

Scope of work

feasibility study, assistance for
financial proposal submission
to European Innovation Fund

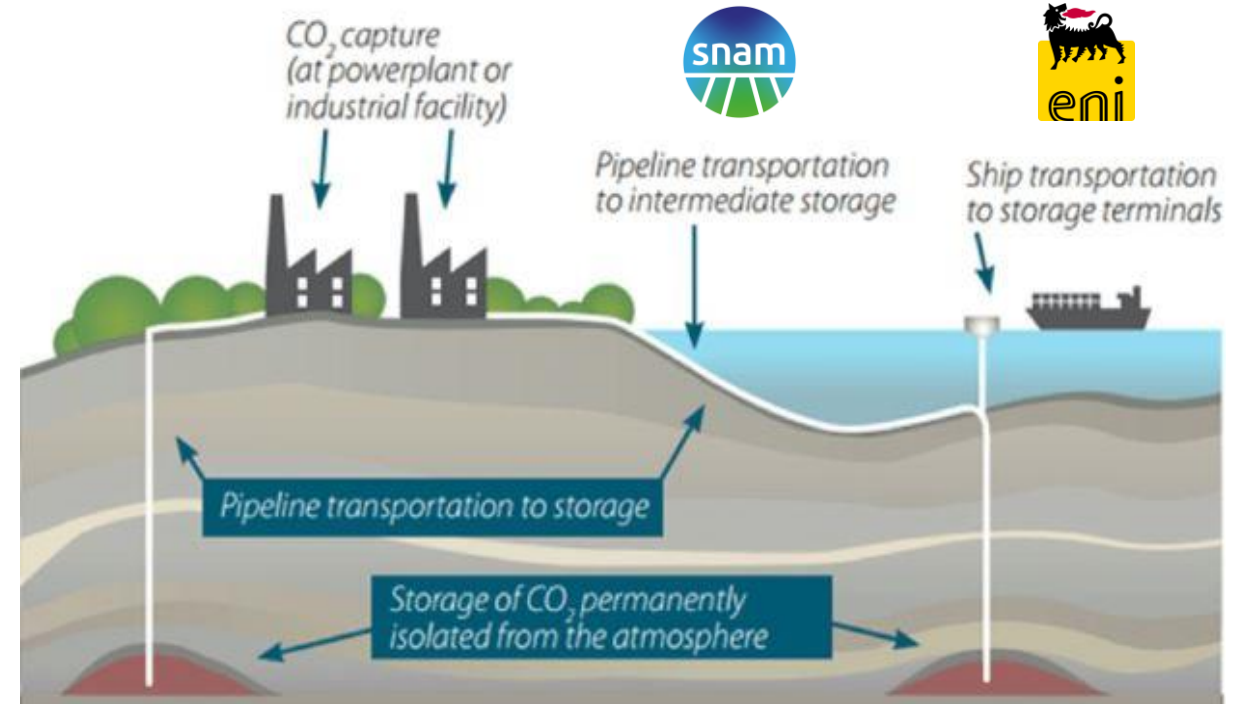
Next steps

FEED Package, Detail design,
Procurement and Construction
of the N°3 Carbon Capture
plants

Emitters



Technical Providers



FENIX PROJECT – EPC OF ONE OFFSHORE WELLHEAD PLATFORM

Work in progress

Client

Total Austral SA

Location

Tierra del Fuego (Argentina)

Main contractor

Rosetti Marino S.p.A.

Contract

EPC/Lump sum

Award

30/03/2022

Ready for sail away

Deck: 29/11/2023

Jacket: 30/10/2023

Scope of work

Engineering, Procurement, Construction, Commissioning, Load Out & Seafastening of one offshore wellhead platform

Technical Data

A 4-legged jacket to be installed in approx. 71 m water depth with associated appurtenances such as piles, disposal tube, anodes, etc., incl. pre-installed risers, J-tubes and facilities for future subsea wells.

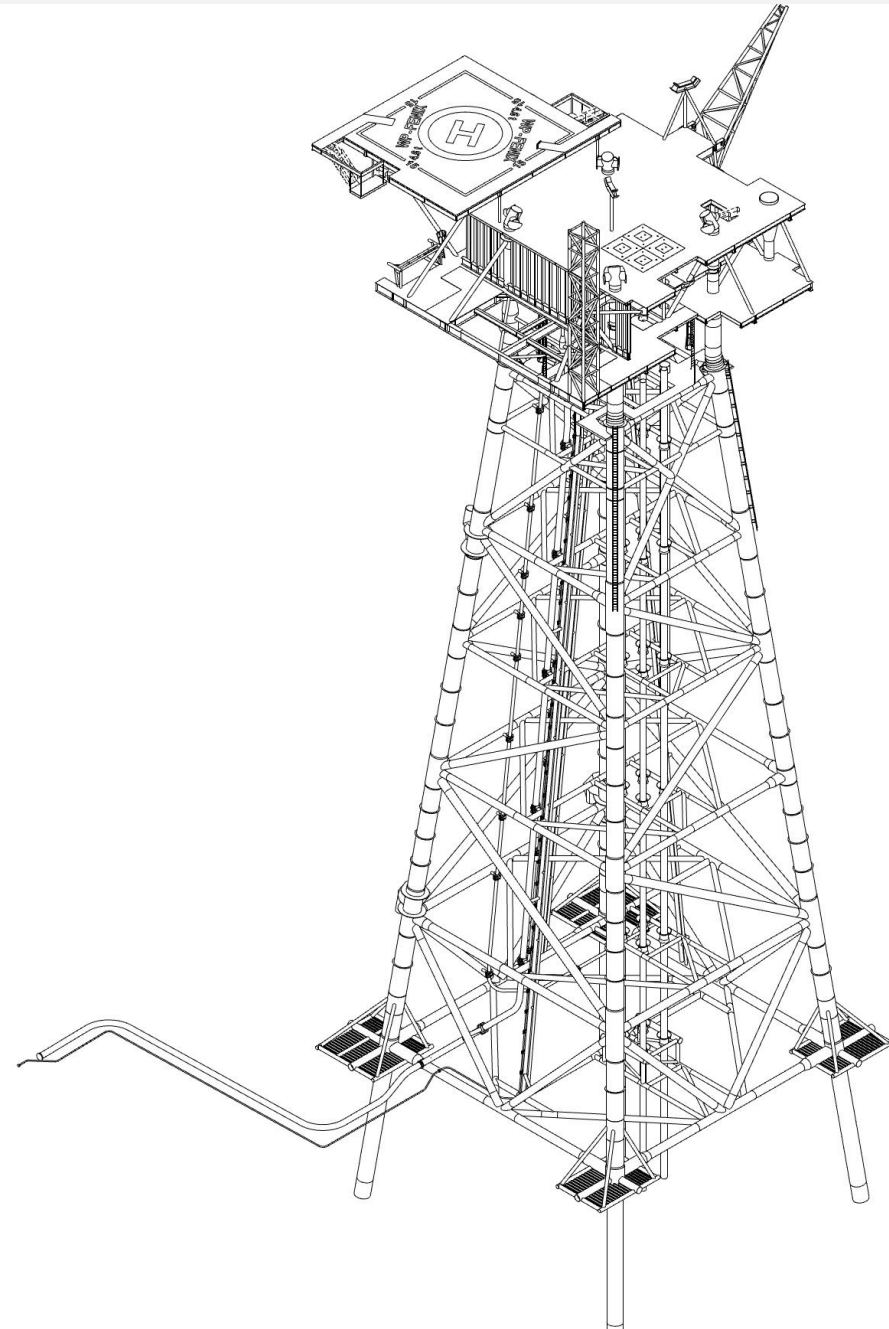
A four-legged deck incl. well flow lines, production manifold, multiphase meters, pig launcher for the export pipeline, cold vent network, closed and open drain systems, walkways, stairs, helideck, access platforms, technical room / accommodation, crane, fuel gas skids etc.

Net weight:

Jacket 1.537 t

Piles (x4) 1.104 t

Total topside 1.385 t



EPCIC8: FDBN F-Location Debottlenecking Project

Completed

Client
North Oil Company

Location
Al Shaheen field, Offshore Qatar

Main contractor
Rosetti Marino S.p.A.

Contract
EPCIC/Lump Sum

Award
June 2021

Completion Date
April 2024

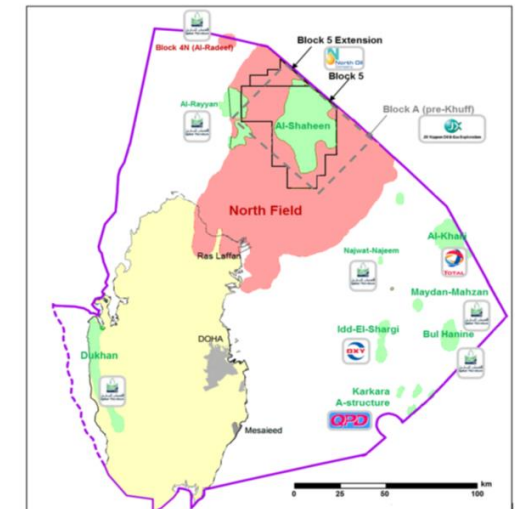
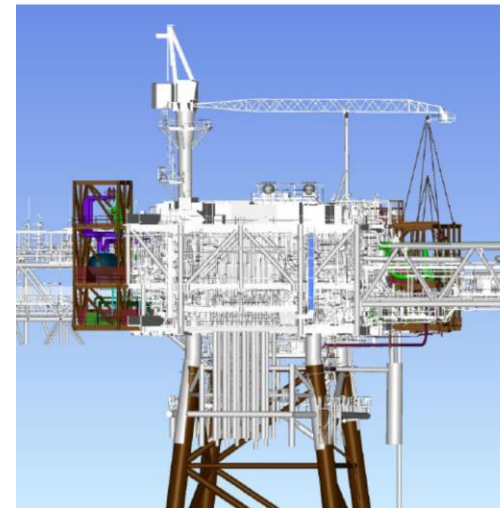
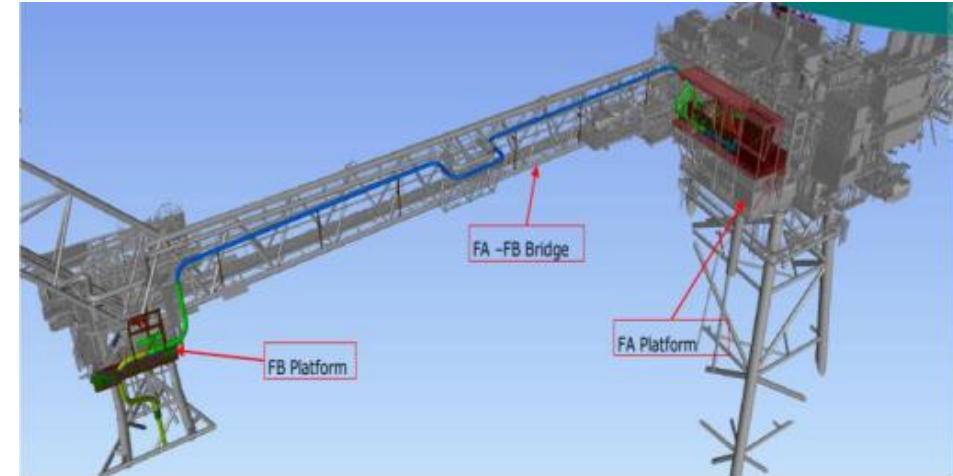
Scope of work
Detailed Engineering,
Procurement, Supply,
Construction, Load-out, Sea-
fastening, Transportation and

Installation at SITE,
Pre-Commissioning and further
Hook-Up and Commissioning at
SITE of the Main Components
and the integration on the existing
facilities.

Technical Data
Integration of a new subsea
pipeline and riser tie-in from the
new CPP and brownfield upgrade
scope of existing FA and FB
facilities at F-Location.

Main components are:

- KOD Module;
- Pig Launcher Module;
- Deck extension on FB;
- Piping on bridge FA-FB.



REVAMPING FOR SINGLE POINT MOORING SYSTEMS 1 AND 2 AND BUOY OPERATING PLATFORM

Work in progress

Client

NAOC
(Nigeria Agip Oil Company)

Location

Niger Delta (Nigeria)

Main contractor

Rosetti Pivot Ltd

Contract

EPCI

Award

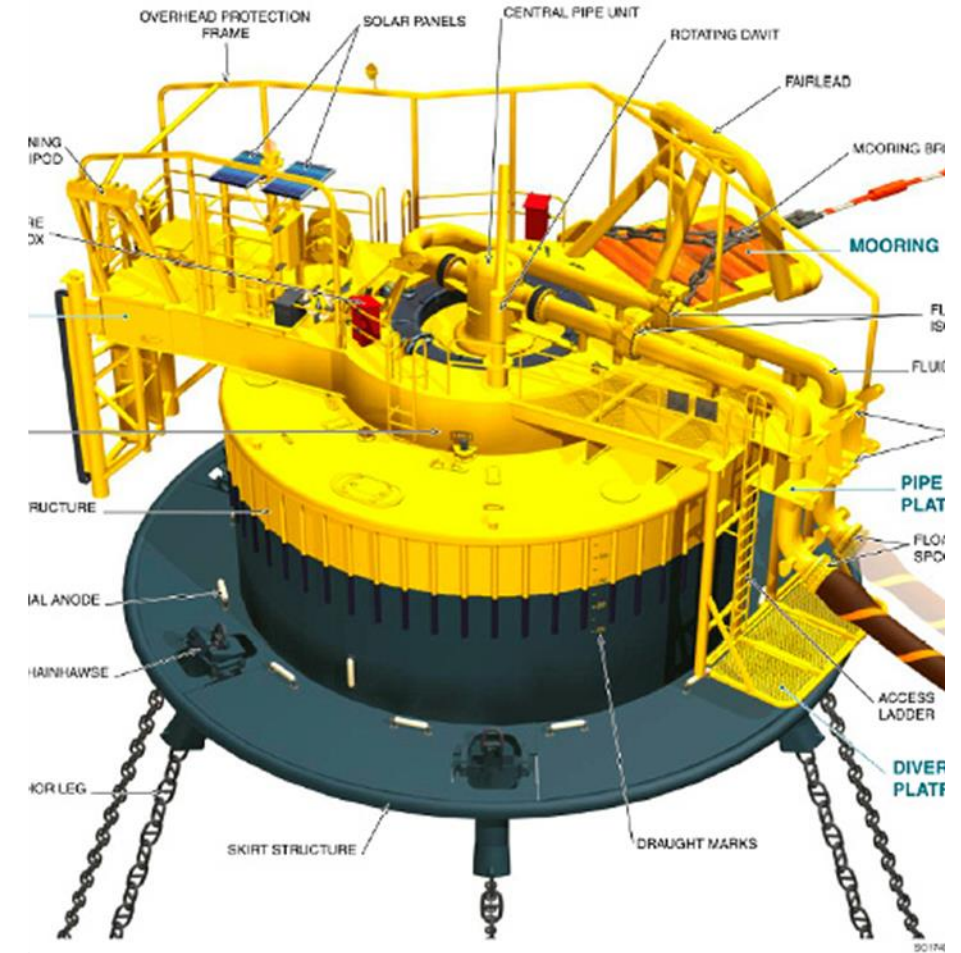
20 September 2021 for SPM 2
01 February 2022 for SPM 1

Ready to sail away

September 2022 for SPM2
January 2023 for SPM1

Scope of work

Extraordinary maintenance for
Single Point Mooring Systems
1 and 2 and Buoy Operating
Platform



BRASS BUOY SPM 2 REPLACEMENT PROJECT

Work in progress

Client

NAOC
(Nigeria Agip Oil Company)

Location

Niger Delta (Nigeria)

Main contractor

Rosetti Pivot Ltd

Contract

EPCI

Award

April 2022

Ready to sail away

December 2023

Scope of work

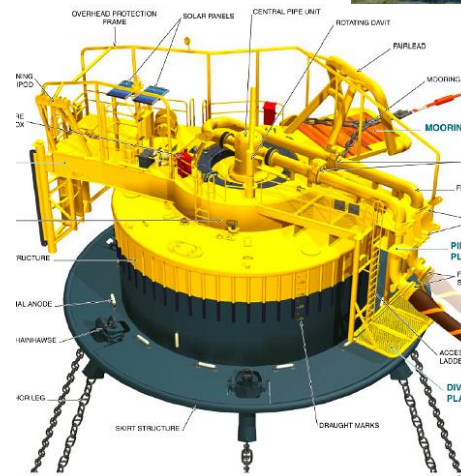
Procurement and In-Country Assembly of new SPM2 Buoy, In-country Fabrication of PLM, Anchor Piles, System Flushing and Isolation prior to disconnection. Decommissioning and towing out of the existing system, installation of new Buoy, PLEM and ancillaries. Commissioning and classification of the new system, Supply of Capital Spares and geotechnical and geological survey.

Technical Data

Approx. weight 285 tons

Dimensions

- Buoy Body Diameter 12 Mt
- Skirt Diameter 16 Mt
- Buoy Body Height 5.3 Mt



ISND – PH5.1B OFFSHORE HOOK UP SERVICE

Work in progress

Client:
Qatar Energy

Location:
Offshore Qatar

Main Contractor:
Saipem S.p.A.

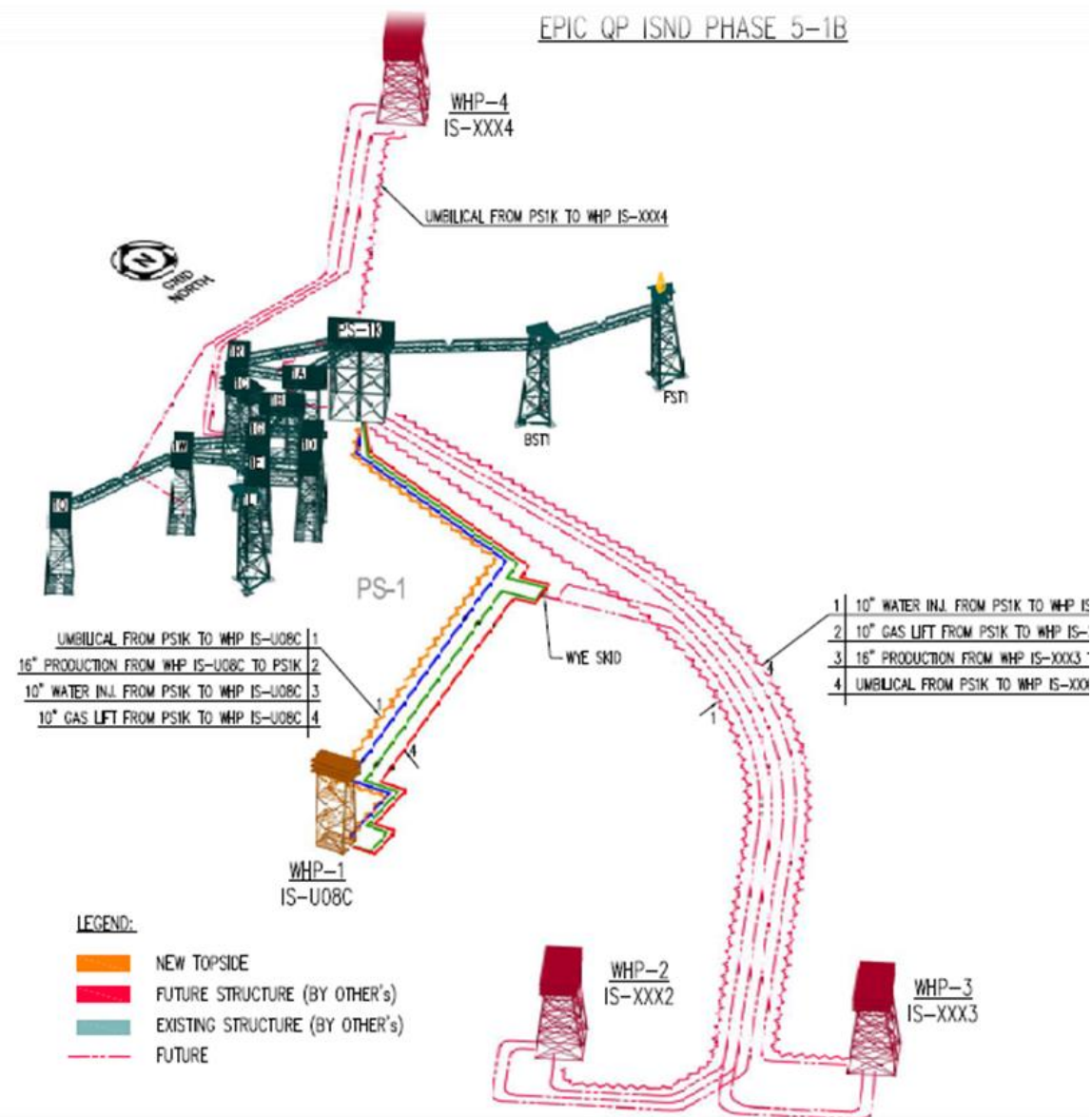
Contract
EPCm

Award:
April 2022

Completion Date:
July 2023

Scope of Work:
Technical Services:
Preparation of Job cards, hook
up services for WHP-1 topside
and brownfield modification on
PS-1K

Tot. Manhours: Approx. 250.000



CALVADOS OFFSHORE WIND FARM PRE-PILED JACKET

Completed

Client
[Chantiers de L'Atlantique](#)

Final client
Eoliennes offshore du Calvados

Location
France – offshore Calvados

Main contractor
Rosetti Marino S.p.A.

Contract
[ePC](#) / Provisional Sum

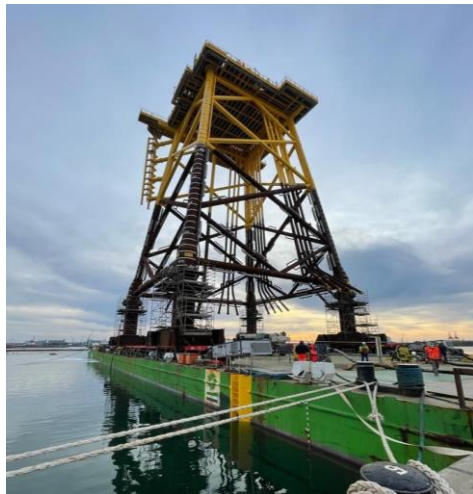
Award
May 2021

Ready for sail away
September 2022

Scope of work
Fabrication Engineering,
Procurement, Construction,
Mechanical Completion, Testing
and Load-out of one (1) jacket

Technical Data
Four (4) legged Jacket:
• Height: 50 m
• Weight: Approx. 1.250 tons

Tot. Manhours: 144,000



FECAMP OFFSHORE WIND FARM PRE-PILED JACKET

Completed

Client
[Chantiers de L'Atlantique](#)

Final client
[Eolien Maritime France](#)

Location
France – offshore [Fécamp](#)

Main contractor
Rosetti Marino S.p.A.

Contract
[ePC](#) / Provisional Sum

Award
October 2020

Ready for sail away
April 2022

Scope of work
Fabrication Engineering,
Procurement, Construction,
Mechanical Completion, Testing
and Load-out of one (1) jacket

Technical Data
Four (4) legged Jacket:
• height: 60 m
• approx. weight: 1.500 tons

Tot. Manhours: 165,000



SAINT NAZAIRE OFFSHORE WIND FARM PRE-PILED JACKET

Completed

Client
[Chantiers de L'Atlantique](#)

Final client
[Eolien Maritime France](#)

Location
France – offshore St. [Nazaire](#)

Main contractor
Rosetti Marino S.p.A.

Contract
[ePC](#) / Provisional Sum

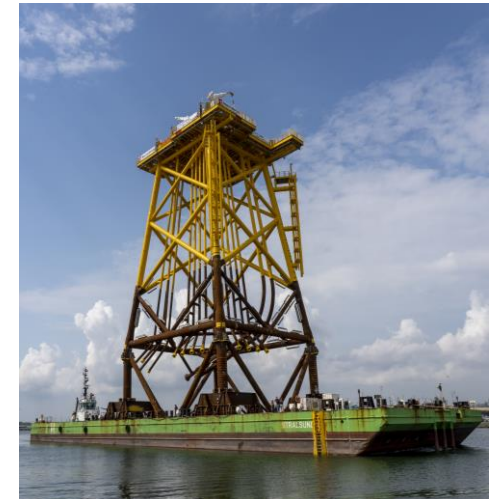
Award
November 2019

Ready for sail away
May 2021

Scope of work
Fabrication Engineering,
Procurement, Construction,
Mechanical Completion, Testing
and Load-out of one (1) jacket

Technical Data
Four (4) legged Jacket:
• height: 48 m
• approx. weight: 1.150 tons

Tot. Manhours: 176,000



WHP D33 PROJECT

Completed

Client

Lukoil-KMN

Location

Kaliningrad (Russia)

Main contractor

ooo Rosetti Marino Projekt

Contract

EPCIC Lump sum

Award

June 2021

Completion date:

Jacket – July 2022

Topside – April 2023

Scope of work

Project management, detail engineering, procurement, construction, mechanical completion, onshore

commissioning, load-out, transportation, installation, Hook Up and offshore commissioning of Wellhead Platform and Jacket

Technical Data

Topside: Wellhead platform (12 wells + 2 future), : 55x45 meters (LxW)

Jacket: 4 legs, height 90 Meters

Weights:

Topside approx. 5500 tons

Jacket approx. 3100 tons

Piles approx. 1150 tons



TYRA FUTURE REDEVELOPMENT PROJECT

Completed

Client

TOTAL DENMARK A/S

Location

NORTH SEA

Main contractor

Rosetti Marino SPA

Contract

EPC Lump sum

Award

December 2017

Ready for sail away

February 2022

Scope of work

Project management, HSEQ management, interface management, design, engineering,

procurement, construction, preservation, mechanical completion, onshore commissioning, load-out and sea fastening of the TEH Topside. Certification Service Contract to DNV GL and novation of ICSS (Siemens), Diesel Generators (Framo), Fire Water Pumps (Framo).

Technical Data

Topside - Living Quarters (88 POB), Utility Deck and Helideck: 39x48x35 meters (LxWxH)

Weight: approx. 5,000 tons

Tot. Manhours: 2,880,000



REVAMP PROGRAM PROJECTS AT MPN FIELD LOCATIONS

Completed

**Client**

MOBIL PRODUCING NIGERIA
UNLIMITED

Location

Idoho Field, approx 50 km South
of Nigerian Coast

Main contractor

ROSETTI PIVOT LTD

Contract

Fixed Term EPC
Outline Agreement

Award

Feb 2016

Ready for offshore mobilization

October 2018

Scope of work

Project Management, HSEQ
Management, Interface
Management, Construction and
Installation Engineering,
Procurement, Onshore
Fabrication, Offshore
Demolition/Installation and Pre-
commissioning.
Scope of work - mostly like-for-

like structural and piping
replacement - covers the main
deck, cellar deck and spider deck

Technical DataPiping

70 ton approx.

Structures

260 ton approx

Mechanical

Pig Receiver, Sump Tank

E&I

MOV's, Line Instruments
and Transmitters

160 POB [at peak]

TOLMOUNT PLATFORM EPCIC SERVICES

Completed

Client

HUMBER GATHERING SYSTEM
LIMITED

Location

TOLMOUNT FIELD - NORTH SEA

Main contractor

Rosetti Marino SPA

Contract

EPCIC Lump sum

Award

May 2018

Ready for sail away

September 2020

Scope of work

Project management, HSEQ
management, interface
management, design,
engineering, procurement,

construction, mechanical
completion, onshore
commissioning, load-out,
transportation, installation, Hook
Up and offshore commissioning
of Wellhead Platform and Jacket.

Technical Data

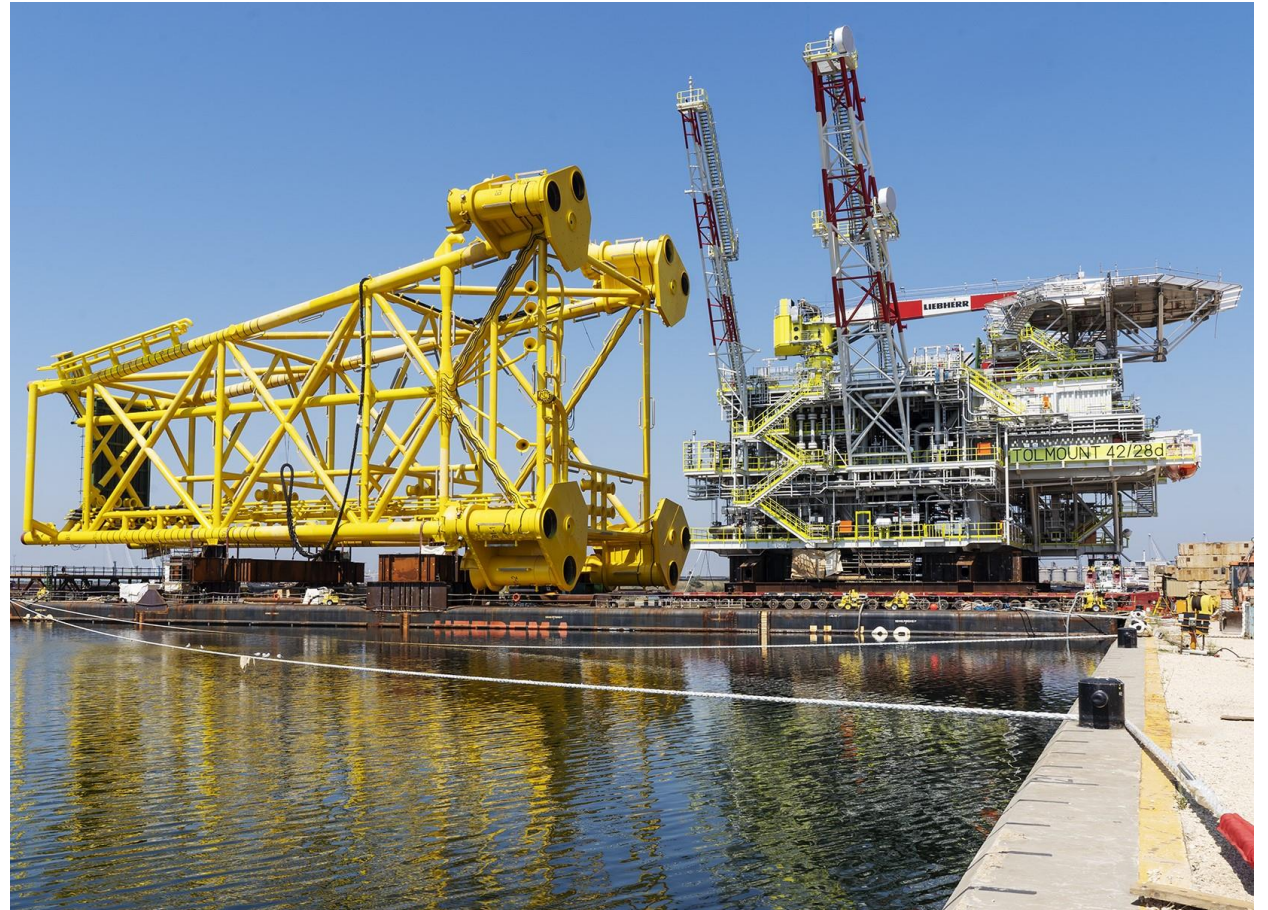
Topside: NUI - Wellhead
platform (4 wells + 2
future), : 32x34 meters
(LxW)

Jacket: 4 legs, height 75
Meters

Weight:

Topside approx. 1800 tons
Jacket approx. 2200 tons
Piles approx. 2200 tons

Tot. Manhours: 1,200,000



EPICC OF NFB OFFSHORE ACCOMMODATION EXPANSION PROJECT

Completed

Client

QATARGAS OPERATING
COMPANY LIMITED

Location

NORTH FIELD BRAVO

Main contractor

Rosetti Marino SPA

Contract

EPICC Lump sum

Award

April 2017

Ready for sail away

February 2020

Scope of work

Conceptual and Detail Design,
Procurement, Installation,
Construction, Commissioning,

Brownfield

Technical Data

No. 1 ALQ Jacket (N.4 legs;

H=59mt)

total weight: 754 t

No. 4 ALQ Piles

(D=1,524 mt – thk = 8-50mm;

L=163,7mt)

total weight: 1,302 t

No. 1 ALQ Topside (N.5 levels)

total weight: 2,253 t

No. 1 ALQ Helideck (helipad in
steel structural)

total weight: 174 t

No. 6 Bridges (from LQ to new

ALQ: L= 10mt)

total weight: 37 tons

Tot. Manhours: 2,040,000



BALANCE OF PLANT FOR 2 NEW STEAM GENERATORS

Completed

Client
VERSALIS

Location
Porto Marghera (Italy)

Main contractor
Rosetti Marino SPA

Contract
ePC Lump sum

Award
May 2016

Ready for commissioning
November 2017

Scope of work
Detail design, Procurement,
Construction and
Commissioning of Balance of
Plant for 2 new steam

generators, civil works,
mechanical,
electrical/instrumentation,
painting and insulation
activities included.

Technical Data
Piping: 560 Tons.
N. 220 Tie-ins
Steel Structures: 200 Tons.
N. 3 Pumps
N. 2 Tanks modifications
Painting: 7,600 Sqm.
Insulation: 8,600 Sqm.
Cables E&I: 55,000 Mt.
Concrete: 2,000 Cum.

Direct Manhours: 300,000
Manpower peak: 100



Remote Instrument Enclosure (RIE) and LSA

Completed

Client

PSNK (Wood Group)/ TCO

Contract

epC Unit Rates/Lump sum

Award

June 2017

Ready for sail away

First RIE : October 2019

Last RIE :April 2020

Costruction site: KCOI Yard,
Aktau

Final delivery Location

Atyrau / Tengiz

Scope of Work description:

- Shop drawings
- Procurement
- Installation of Automation systems (Honeywell-PCS/ESD/F&G)
- Fabrication, Integration, Testing, Inspection
- Electrical and Instrumentation works
- Pre-commissioning and Commissioning
- Delivery FCA/FOB

BUILDING TOT WEIGHT
[ton] 1750



RIE No.	Size (L x W x H)	Weight (ton)	Description
2051	18.9 x 6.7 x 5.1	110	Multi Well Pad DP20 – Injection Remote Instrument Enclosure
2057	18.9 x 6.7 x 5.1	110	Multi Well Pad DP21 – Injection Remote Instrument Enclosure
2055	18.9 x 6.7 x 5.1	110	Multi Well Pad DP22 – Injection Remote Instrument Enclosure
2053	18.9 x 6.7 x 5.1	110	Multi Well Pad DP23 – Injection Remote Instrument Enclosure
2059	18.9 x 6.7 x 5.1	110	Multi Well Pad DP24 – Injection Remote Instrument Enclosure
9105	36.2 x 7.55 x 5.9	315	Steam Boiler 1 & 2 Large Standalone Remote Instrument Enclosure
9106	36.2 x 7.55 x 5.9	315	Steam Boiler 3 & Flare Large Standalone Remote Instrument Enclosure
4001	27.35 x 6.7 x 6.0	200	OGP Dehydration Large Standalone Remote Instrument Enclosure
0303	24.5 x 14.6 x 6.6	320	3GI Injection - Reception Large Standalone Remote Instrument Enclosure
PM4	10.5 x 4,5 x 5,5	50	PM4 Additional RIE

BAHR ESSALAM PHASE II TOPSIDE REVAMPING

Completed

**Client**

Mellitah Oil & Gas B.V.

Location

Sabratha Platform – Block NC41

Main contractor

Technip FMC

Contract

Lump sum

Award

April 2017

Ready for start up

February 2018

Scope of work

Construction Engineering,
Procurement of bulk material,
onshore fabrication, offshore
construction activities & Floatel

Technical Data

No. 1 ALQ Jacket (N.4 legs;
H=59mt)

Total weight: 754 t

No. 4 ALQ Piles
(D=1,524 mt – thk = 38-
50mm; L= 163,7mt)
Total weight: 1,302 t

Tot. Manhours: 146,000

EPCI FOR A NEW JACKET FOR SOUTH PARS

Completed

Client

PETRO PAYDAR IRANIAN OIL COMPANY

Location

IRAN – SOUTH PARS 13 FIELD

Main contractor

Rosetti Marino SPA

Contract

Fixed UR

Award

April 2017

Ready for sail away

August 2017

Offshore installation

September 2017

Scope of work

Conceptual and Detail Design,
Procurement, Construction,
Transportation and Installation of
Jacket SPD13A

Technical Data

Nr.1 four-legged jacket with
well-head module and
appurtenances
Total weight: 1.800 t

Nr.4 piles (inside jacket legs)

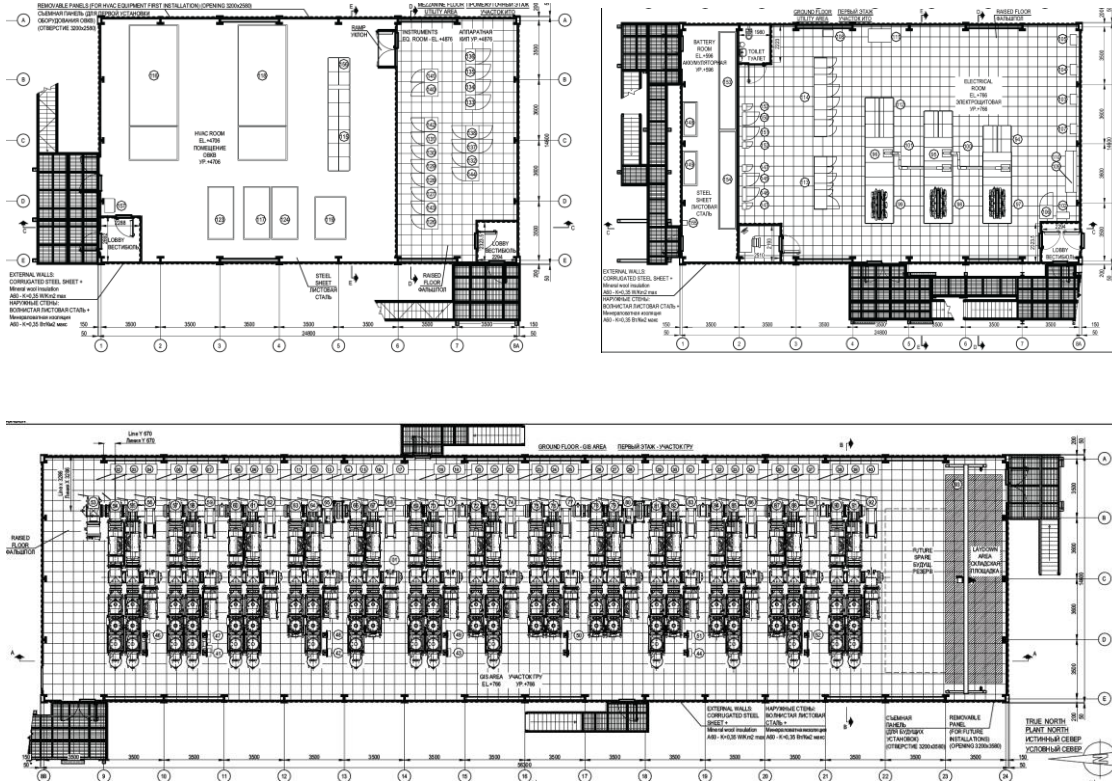
Total weight: 1.400 t

Tot. Manhours: 139,000



110kV GIS MAIN SUBSTATION 52-SU-3301

Completed



Client
SKEMA SpA

Final client
TENGIZCHEVROIL

Location
KAZAKHSTAN

Main contractor
Rosetti Marino SPA

Contract
EPC/Lump Sum

Award
October 2016

Ready for sail away
August 2018

Project
Future Growth Project, Wellhead
Pressure Management Project
(FGP/WPMP)

Scope of work
Structure and Architectural
Detail Design, Procurement and
Fabrication, Load out activities
of a 110kV GIS Substation

Technical Data
BUILDING DIMENSION [m]
GIS MODULE
56,3 x 14,60 x 8,644 (h)
UTILITY MODULE
24,8 x 14,60 x 8,644 (h)

BUILDING TOT WEIGHT
[ton] 1300

Tot. Manhours: 232,000

MODULAR 35kV SUBSTATION 51-SU-33004

Completed

Client

GE Grid Solutions

Final client

TENGIZCHEVROIL

Location

KAZAKHSTAN

Main contractor

Rosetti Marino SPA

Contract

EPC/Lump Sum

Award

January 2016

Ready for sail away

May 2017

Project

Future Growth Project, Wellhead
Pressure Management Project
(FGP/WPMP)

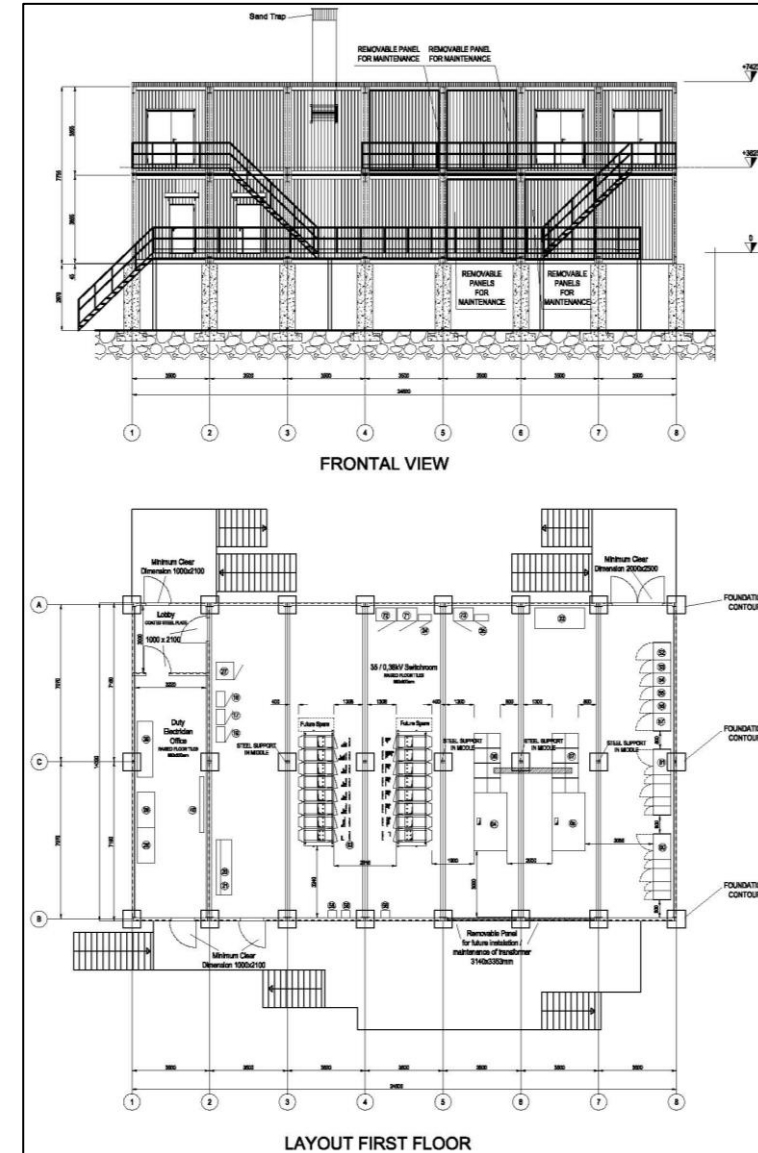
Scope of work

Detail design, Construction
Engineering, Procurement,
Fabrication, Commissioning
including HV/MV

Technical Data

BUILDING DIMENSION [m] 24,5 (l)
x 14.14 (w) x 7,9 (h)
BUILDING WEIGHT [ton] 414
The proposed Substation is
supplied as subdivided in N.14
modules of indicative dimensions
(m) 3,5 (W) x14,2 (L) x 3,9 (H)

Tot. Manhours: 107,000



110kV GIS CORE SUBSTATION

Completed

Client
SKEMA SpA

Final Client
TENGIZCHEVROIL

Location
KAZAKHSTAN

Main contractor
Rosetti Marino SPA

Contract
EPC/Lump sum

Award
October 2014

Ready for sail away
December 2016

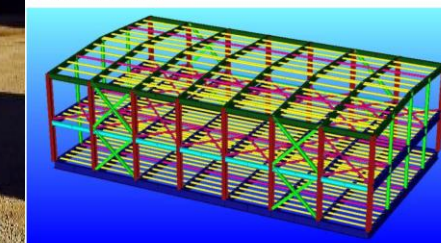
Scope of work
Structure and Architectural
Detail Design, Procurement and
Fabrication, Load out activities of
a 110kV GIS Substation

Technical Data
110 kV Core substation
Weight: 310 Tons (structures
only)

Tot. Manhours: 92,000

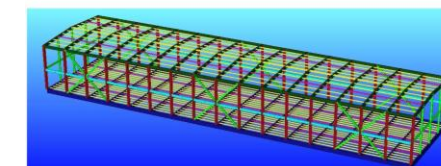


Main Substation Module for GIS.



Main dimension: 56,3 x 14,6 x 8,7 m

Main Substation Module for Utility.



WHP3 STRUCTURAL MODIFICATIONS – NENÈ OIL FIELD

Completed



Client
ENI CONGO

Location
RAVENNA - ITALY

Main contractor
Rosetti Marino SPA

Contract
EPC

Award
June 2016

Ready for sail away
November 2016

Scope of work
Detail design, Procurement,
Construction and commissioning
of WHP3 Platform Jacket and
Deck for Nenè Oil Field - Congo

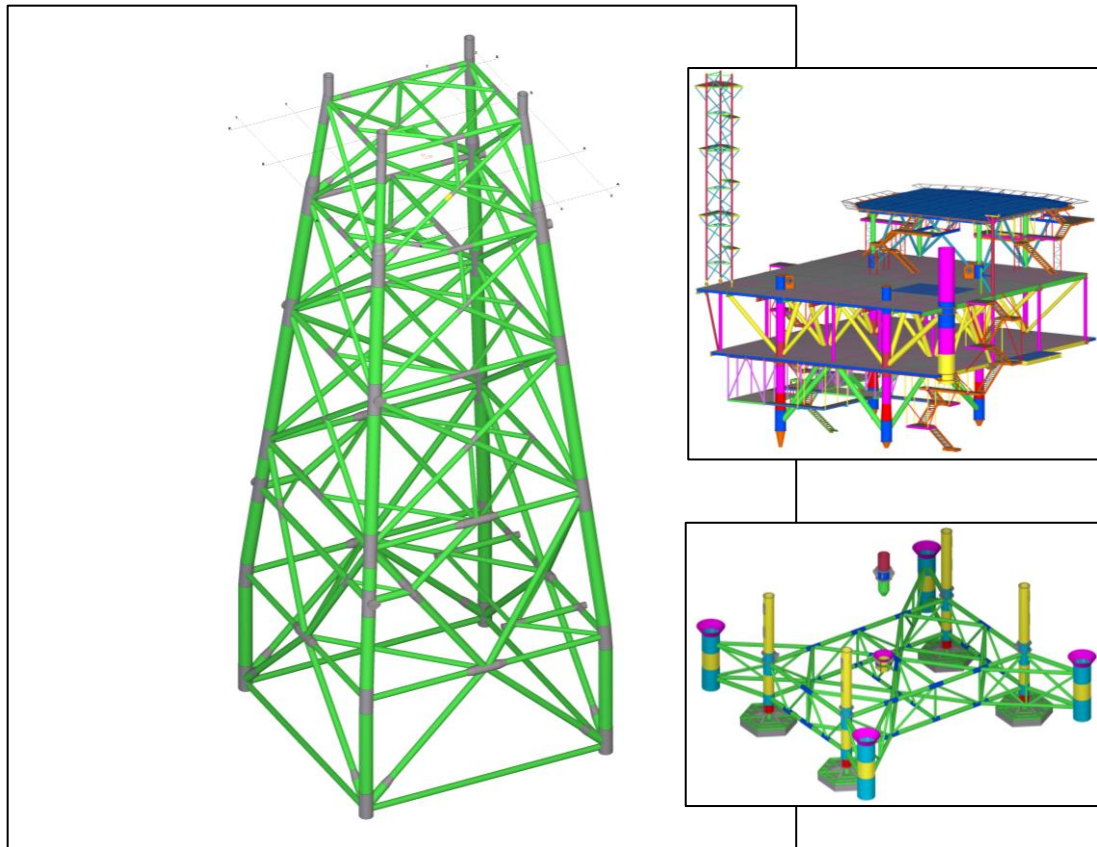
Technical Data
Steel Structures: 650 Tons

Painting: 7,600 Sqm.

Tot. Manhours: 84,000

ZOHR PROJECT

Completed



Client
PETROBEL

Location
Offshore Egypt – Zohr Field

Main contractor
Rosetti Marino SPA

Contract
Unit rates

Award
April 2016

Ready for sail away
Batches between June -
November 2016

Scope of work
Construction Engineering,
Procurement and Fabrication
activities of steel structures for
Jacket, Foundation
Piles, Pile Guide Frame (PGF) and
Deck for ZOHR Central Control

Platform.

Technical Data
Nr. 1 four legged Jacket,
Nr. 1 topside, nr.1 PGF structure
and nr.4 foundation piles.
Jacket 95 m (H) - Weight: 1714
Tons
Deck - Weight: 1039 Tons
Piles - Weight: 927 Tons
PGF - Weight: 360 Tons

Tot. Manhours: 18,000

MOSE I COMPLETION PROJECT

Completed

Client

Consorzio Venezia Nuova

Location

Venice – Italy

Main contractor

Rosetti Marino SPA

Contract

Cost plus fee

Award

Feb 2016

Duration

1 year

Scope of work

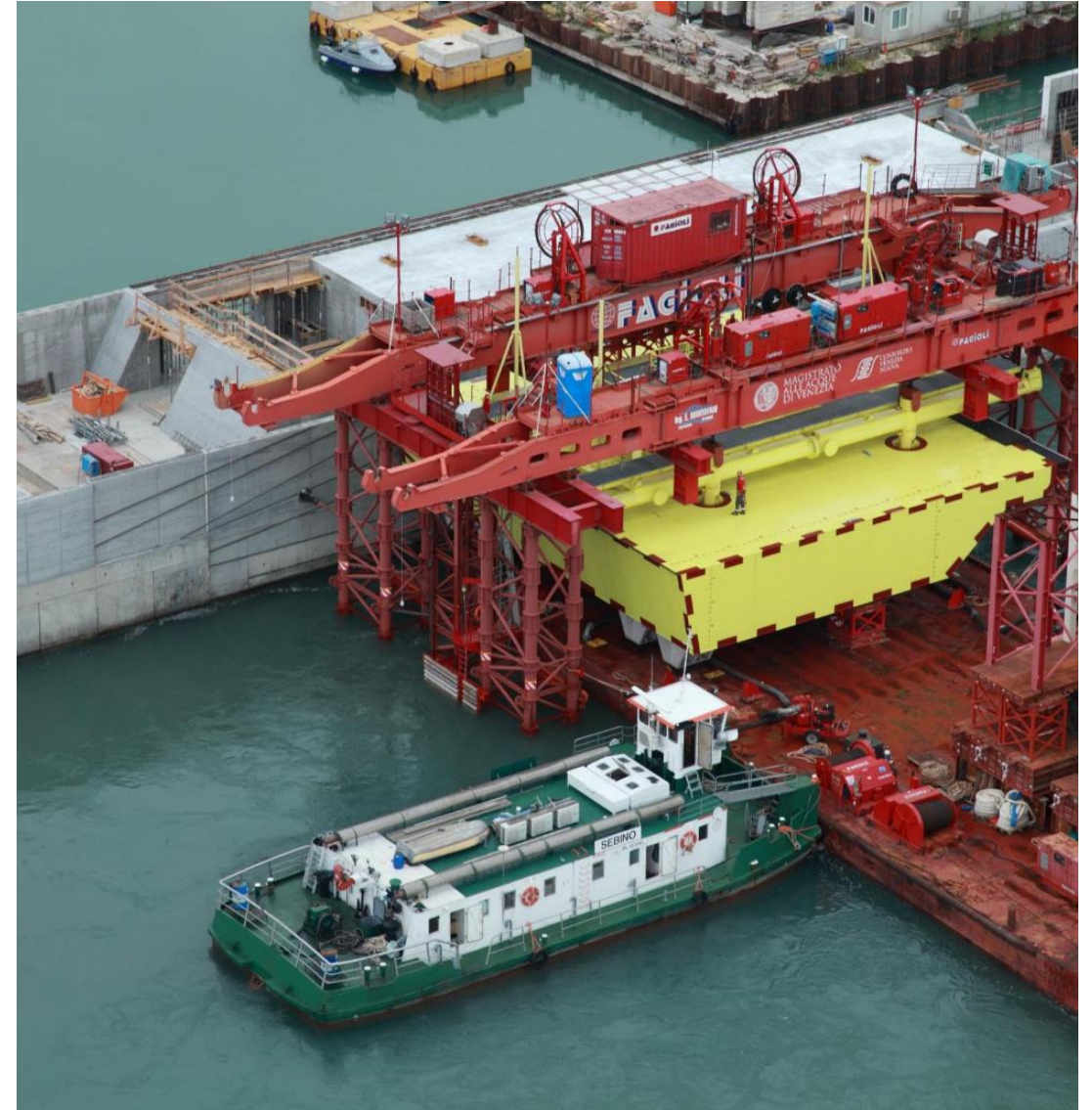
Structural modifications,
commissioning and Start-up of 4
leg jack up installation vessel

specifically designed for the
installation and maintenance of
dams for Venice. Entire system is
called MOSE.

Modifications on structures and
hydraulic systems.
Technical assistance for
Mechanical Completion,
Pre-comm and commissioning.
Operations and Maintenance.
Offshore Tests in November 2016;

Operations and maintenance
program to be agreed (most
probably a 3 year period starting
from January 2017)

Tot. Manhours: 30,000



ABU QIR DEVELOPMENT PROJECT

NAQ Q PIII PLATFORM

Completed

Client

Abu Qir Petroleum

Location

Offshore Egypt – North Abu Qir
Field

Main contractor

Petrojet

Nominated Sub.

Rosetti Marino SPA

Contract

EP/Lump Sum

Award

October 2014

Ready for sail away

July 2016

Scope of work

Engineering and Procurement
activities.

Technical Data

nr. 1 four legged Jacket,
nr. 1 wellhead module and
topside, nr. 6 gas/oil wells (4 + 2
future)

Jacket: 40,5 m (H) –Weight: 550
Tons

Deck: Weight: 2040 Tons

Piles: Weight: 720 Tons

Tot. Manhours: 160,000



DP4 – FPSO INTERFACE WORKS

Completed

**Client**

STX Offshore & Shipbuilding

Final Client

MELLITAH OIL & GAS B.V.

Location

Bouri Field - Offshore Libya

Main contractor

Rosetti Marino SPA

Contract

EPIC contract on Turn Key Lump Sum basis

Award

October 2014

Ready for sail away

February 2016

Scope of work

Project Management,
Engineering (Basic Design review, detailed engineering development & Risks

assessment), Procurement & Inspection Fabrication, Offshore installation and Hook up, Dismantling, installation and Hook up, recommissioning & Commissioning activities.

Description

New FPSO will be installed near the platform . Modification and interface works on the platform to be done for new risers connection (HV electrical power cable and 16" inc. process piping)

Technical Data

Main new equipment:
Transformer, UTA, Switchboard, fiber optic, Control&Safety system extension, ESDV.
E&I, mechanical, structural and piping works to perform.

Tot. Manhours: 86,000

GOLIAT PROJECT

GOLIAT FPSO

Completed

Client

KOSSCO LTD (Korea) and MDE (Norway)

Final Client: ENI Norge

Location

Ulsan, South Korea (1° phase)
Norway, Barents sea (2° phase
Hook up)

Main contractor

Rosetti Marino SPA

Contract

MS
Daily rates

Award

January 2014

Ready for sail away

1st Quarter 2016

Scope of work

Provision of Services for mechanical completion activities on Goliat FPSO during Construction at Yard (Precommissioning & commissioning – all disciplines) and during Offshore hookup.

Technical Data

Weight approx. 65.000 Tons, diameter 120m, height 76m, FPSO with oil storage, sea ballasting system, Gas Turbine Generation and Living quarter

Manhours 1° phase (Korea):
80.000

Manhours 2° phase (Norway):
70.000



DRILLING RIG CONVERSION TO WHP PLATFORM

Completed

Client
LOTOS PETROBALTIC

Location
Poland

Main contractor
Rosetti Marino SPA

Contract
EPMS

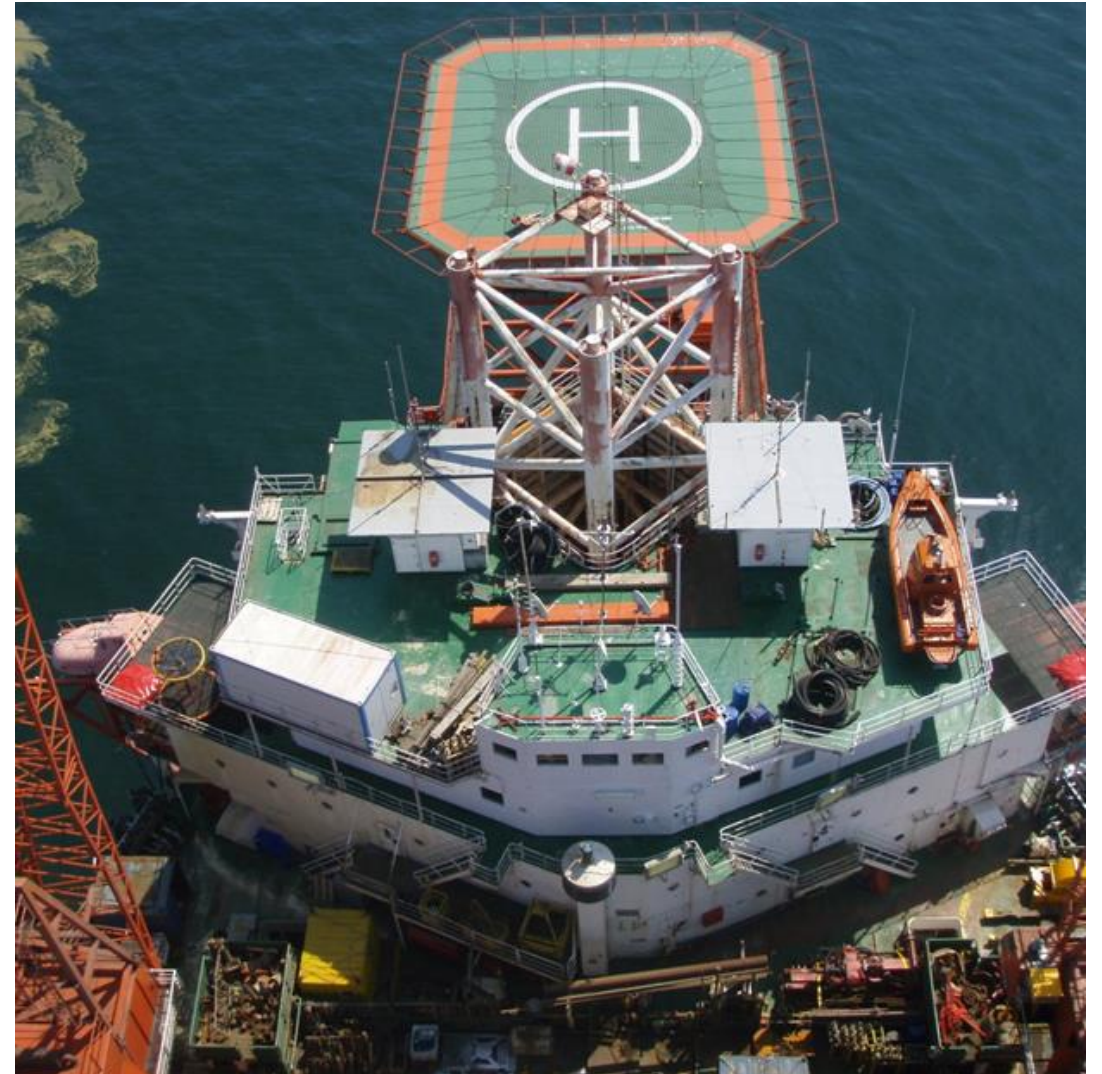
Award
August 2013

Ready for sail away
November 2015

Scope of work
Conversion of drilling rig from
MODU to production center.
Engineering, Procurement
services, management and HUC
works.

Technical Data
Weight: Approx. 3.000 tons
new modules and removal
and reconversion of drilling rig
Hull and legs

Tot. Manhours: 293,000



MARLIN DEVELOPMENT PROJECT

Completed

Client

FOXTROT INTERNATIONAL LDC

Location

Offshore Ivory Coast

Main contractor

Rosetti Marino SPA

Contract

EPC

Award

December 2012

Ready for sail away

Jacket & piles: August 2014

Deck: March 2015

Scope of work

Engineering, Procurement and supply of all material and

equipment, prefabrication, fabrication and assembly, precommissioning, commissioning load out, site hook-up, site commissioning and assistance for start-up of:

One (1) 4-legged jacket, four (4) skirt piles, A Four (4) deck level Topside and a 20 POB Living Quarter

Technical Data

Topside: LxWxH 54x31x20

Weight: 4.500 tons

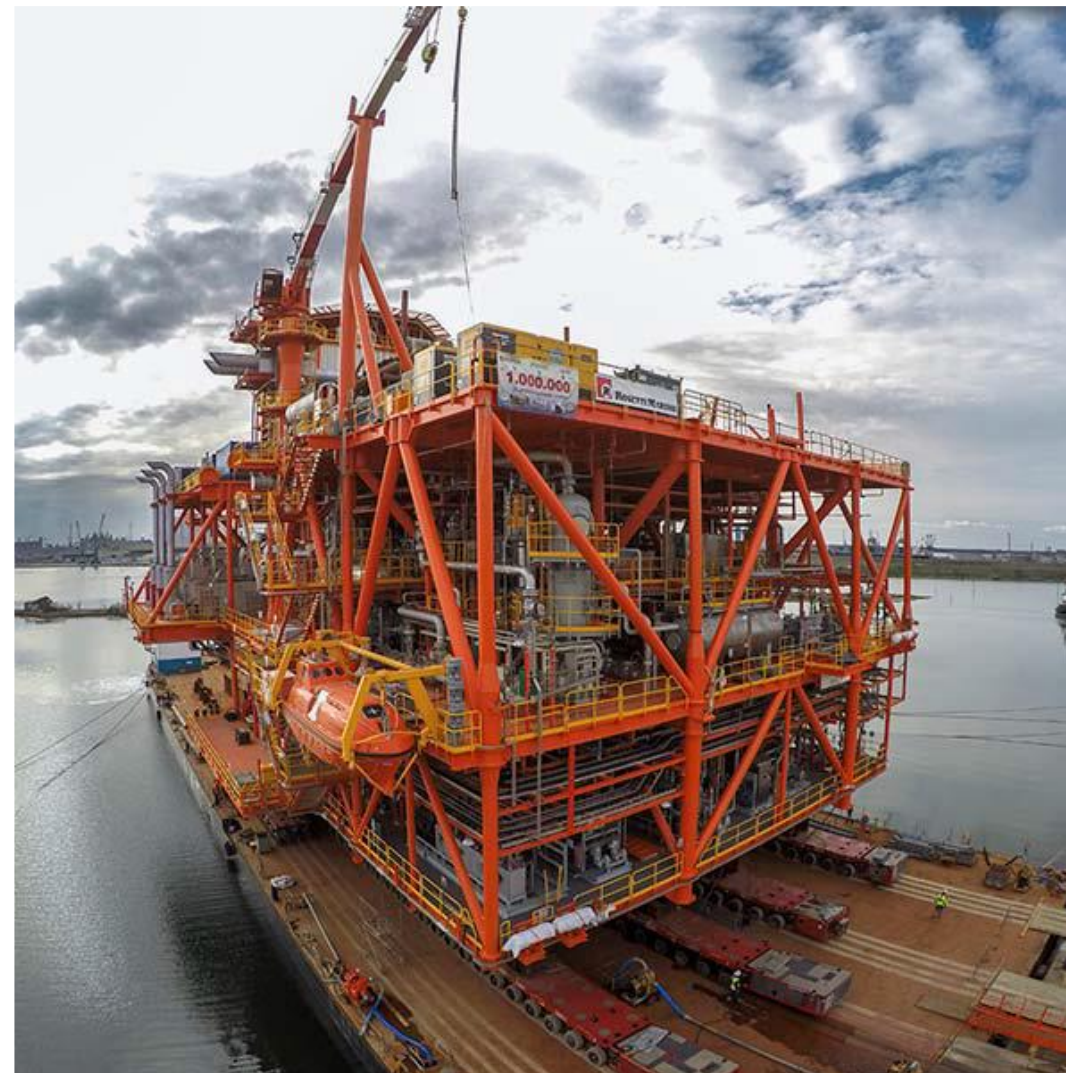
Jacket: H 118 m

Weight: 3.500 tons

(+ 1.300 tons for piles)

Living Quarter: 20 POB

Tot. Manhours: 940,000



ELETTRA AND FAUZIA PLATFORMS

Completed

Client

ENI SPA

Location

Adriatic Sea

Main contractor

Rosetti Marino SPA

Contract

EPC

Award

April 2013

Ready for sail away

April 2014

Scope of work

Engineering, procurement,

construction, load-out and sea fastening, transportation to site, hook up, commissioning, preparation of the platform and assistance during dewatering operations, start up and performance tests of Elettra and Fauzia decks.

Technical Data

Deck : 20x17x22 (LxWxH)

Weight:

Elettra – Approx. 450 tons

Fauzia – Approx 610 tons

Tot. Manhours - Elettra: 122,000

Tot. Manhours - Fauzia: 186,000



IKA & IVANA FIELD DEVELOPMENT PROJECT

IKA JZ PLATFORM

Completed

Client

Inagip doo

Location

Offshore Adriatic Sea, Croatian
Sector

Main contractor

Rosetti Marino SPA

Contract

EPC

Award

November 2012

Completion date

July 2014

Scope of work

Engineering, Procurement,
Fabrication, Transportation,
Offshore Hook-up and
Commissioning and Start-up
Assistance.

Technical Data

Deck: LxWxH 54x31x20

Weight: 510 tons

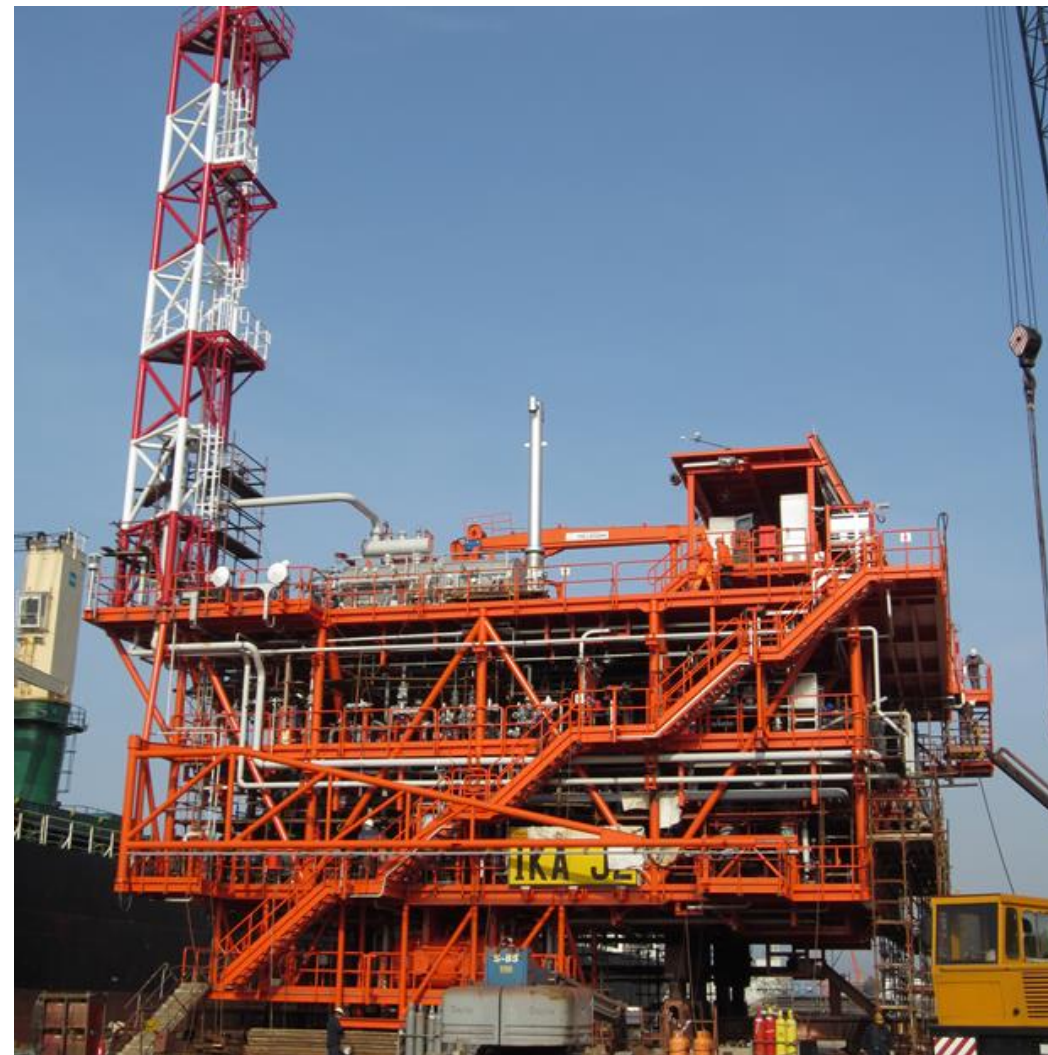
Wellhead module: 78 tons

Three-legged jacket: H 72 m

Weight: 735 tons

Piles: 690 tons

Conductors: 242 tons



CLIPPER PLQ UPGRADE PROJECT

Completed

Client

SHELL UK

Location

North Sea UKCS

Main contractor

Rosetti Marino SPA

Contract

EPC

Award

August 2012

Ready for sale away

June 2014

Scope of work

Engineering, procurement,

fabrication, testing, onshore commissioning, load-out and sea fastening of the Clipper Accommodation Module with integral Utility Deck and Helideck, the link bridge, the jacket and piles.

Technical Data

Topsides - Living Quarter (84 POB), Utility Deck and helideck: 50x25x25 (LxWxH)
Four-legged jacket (weight: 800 tons)
Weight: Approx. 3000 tons

Tot. Manhours: 514,000



WEST FRANKLIN PROJECT

Completed

Client

ELF EXPLORATION UK LTD /
TOTAL Group

Location

North Sea, UKCS (240 Km East of
Aberdeen)

Main contractor

Rosetti Marino SPA

Contract

EPCI

Award

July 2011

Ready for sail away

June 2013

Scope of work

Engineering, Procurement,
Construction, Installation,

Hook-up and Commissioning of
Topsides for the West Franklin
platform

Description

West Franklin topside will be
used in the extraction of gas and
condensed crude oil, with 9 high
pressure and high-temperature
wellheads, the estimated
production design rate of West
Franklin platform is 40,000
barrels of oil equivalent per day.

Technical Data

Topside: LxWxH: 40x40x20 mt
Weight: 3.300 tons

Tot. Manhours: 707,000



ELGIN B PROJECT

Completed

Client

ELF EXPLORATION UK LTD /
TOTAL Group

Location

North Sea, UKCS (240 Km East of
Aberdeen)

Main contractor

Rosetti Marino SPA

Contract

EPCI

Award

July 2011

Ready for sail away

June 2013

Scope of work

Engineering, Procurement,
Construction, Installation, Hook-up
and Commissioning of Topsides
for the Elgin B Platform

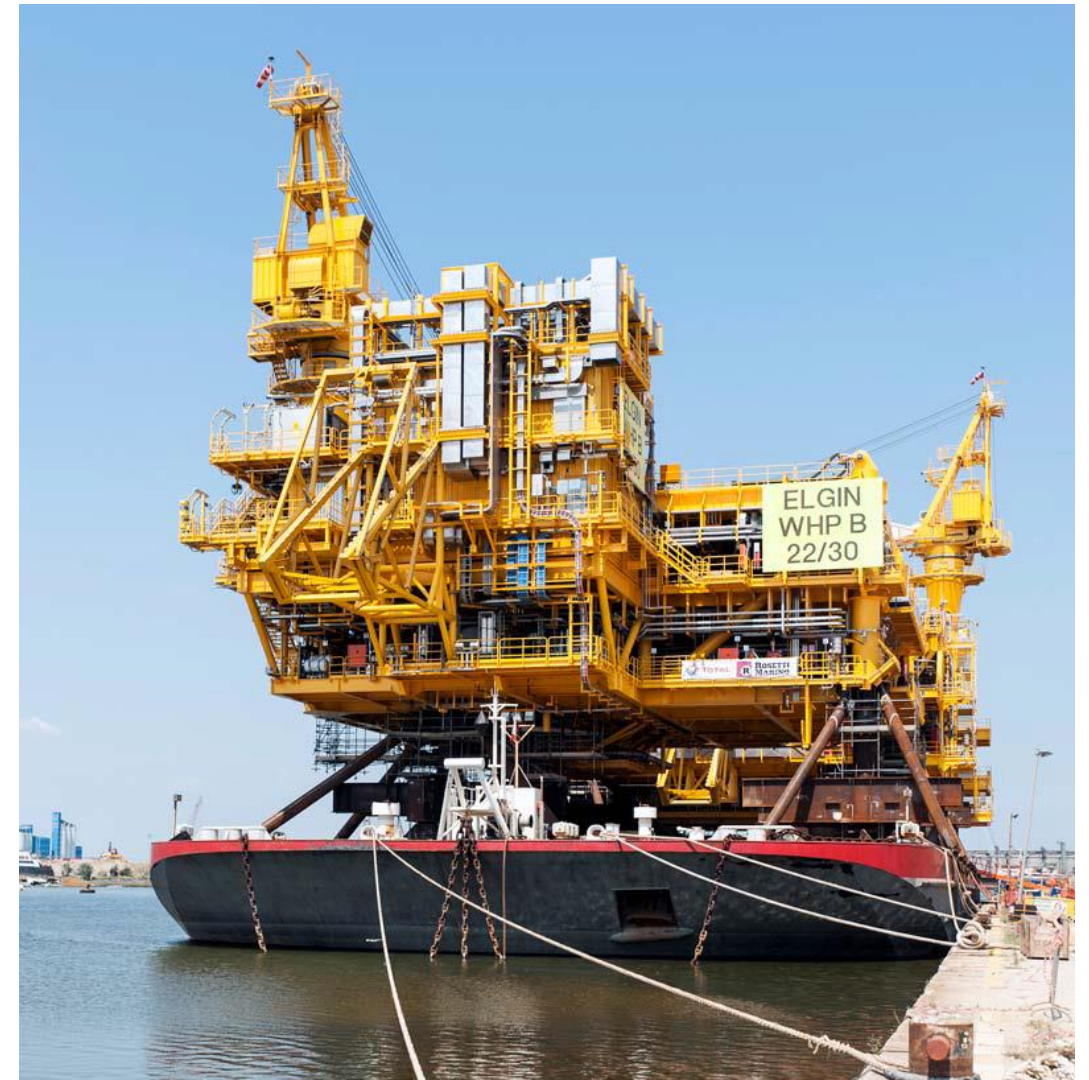
Description

Elgin B topside will be used in the
extraction of gas and condensed
crude oil, with 12 high-pressure
and high-temperature wellheads,
the estimated production design
rate of Elgin B platform is of
65,000 barrels of oil equivalent
per day.

Technical Data

Topside: LxWxH: 35x35x15mt
Weight: 2.300 tons

Tot. Manhours: 529,000



DP3/DP4 MODIFICATION & REVAMPING PROJECT

Completed

Client

MELLITAH OIL & GAS B.V.

Location

Bouri Field – Offshore Libya

Main contractor

Rosetti Marino SPA

Contract

EPIC contract on Turn Key Lump Sum basis

Award

October 2012

Provisional Acceptance

November 2013

Scope of work

Engineering, Procurement, Fabrication, Transportation & Delivery, Off-shore installation, Testing, Precommissioning, Commissioning & assistance to

the Company during Start-up

Description

Decommissioning and dismantling of Gas Sweetening Unit, Procurement of bulk material (structures, piping, E&I), construction of 3 chemical transfer pump skids & 4 chemical injection skids.

Offshore revamping works onboard two platforms, Update of the DCS/ESD/PSD system

Technical Data

Dismantling of Unit 22 for a total weight of 240 tons (Columns, Piping and Structures)

Cables: 3000m Piping: 60t

Scaffolding more than: 3500 m3

Offshore works: 70.000 mhrs (SIMOPS)

Tot. Manhours: 107,000



JASMINE DEVELOPMENT PROJECT JASMINE WHP, JLQ & JRP SUBSTRUCTURES

Completed

Client
ConocoPhillips UK

Location
Central North Sea

Main contractor
Rosetti Marino SPA

Contract
EPC Lump Sum

Award
February 2010 (WHP)
August 2010 (JLQ & JRP)

Ready for sail away
April 2011 (WHP)
April 2012 (JLQ & JRP)

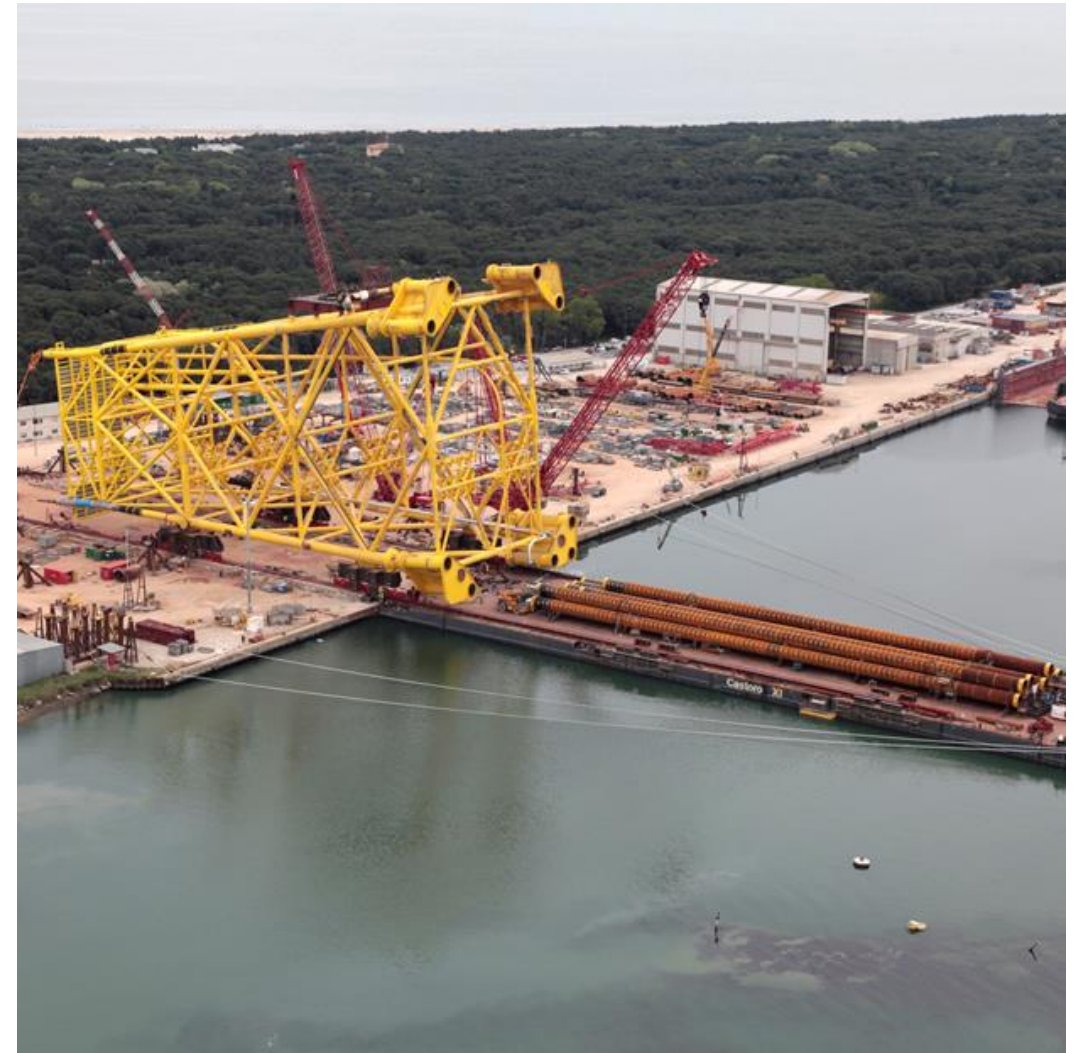
Scope of work
Construction engineering,
procurement, fabrication, load-out

and sea-fastening.

Description
nr. 3 Jackets and piles

Technical Data
WHP Four-legged jacket:
Weight: 5.300 Te
Nr. 9 skirt piles weighing 3.800 Te
JRP Four-legged jacket:
Weight: 5.600 Te
Nr. 8 skirt piles weighing 3.400 Te
JLQ Four-legged jacket:
Weight: 3.400 Te
Nr. 4 skirt piles weighing 1.700 Te

Tot. Manhours - WHP: 475000
Tot. Manhours - JLQ: 355000
Tot. Manhours - JRP: 455000



KASHAGAN EXP. PROGRAM - TEMPORARY UTILITY MODULE

Completed

Client:
ERSAI Caspian Contractor LLC

Location:
Caspian Sea, Kazakhstan
Sector

Main Contractor:
Rosetti Marino

Award
June 2007

Ready for sail away
August 2008

Type of Contract
EPC
Lump sum

Scope of Work
Engineering, Procurement and
Construction of Temporary
Utility Module (T.U.M.)

Technical data
Overview of dimensions and
capacities :
Length o.a.: 95 m
Breadth o.a.: 16 m
Design draft: 3,6 m
Height: 14 m
Weight: 1.600 tons

Design Temperature: Suitable
for operation all year round (-
36 to +40 °C)



ADDITIONAL LIVING QUARTER- KARLYGASH

Completed

Client:
Agip KCO

Location:
North Caspian Sea, Kazakhstan
Sector

Main Contractor:
Rosetti Marino

Date of Contract Award:
November 2004

Ready for load Out:
July 2006

**Overview of dimensions and
capacities of the LQ Barge**

Length o.a.: 95 m
Breadth o.a.: 16.40 m
Design draft: 3,6 m3
Displacement: 5.459 tons

Classification

Barge is certified by Russian
Maritime Register of Shipping
and Statutory regulators by RoK

Class Notation

Berth connected vessel (floating
hostel) + ice class

Scope of Work: 180 POB Living
Quarter (LQ) Barge suitable for
operation all year around in the
North Caspian Sea both in
grounded and floating condition.
Temporary Refuge is pressurised
and equipped with BA system
capable of supporting life of 180
person in a hydrocarbon/
toxic/explosive atmosphere for
an endurance time of 120
minutes.

