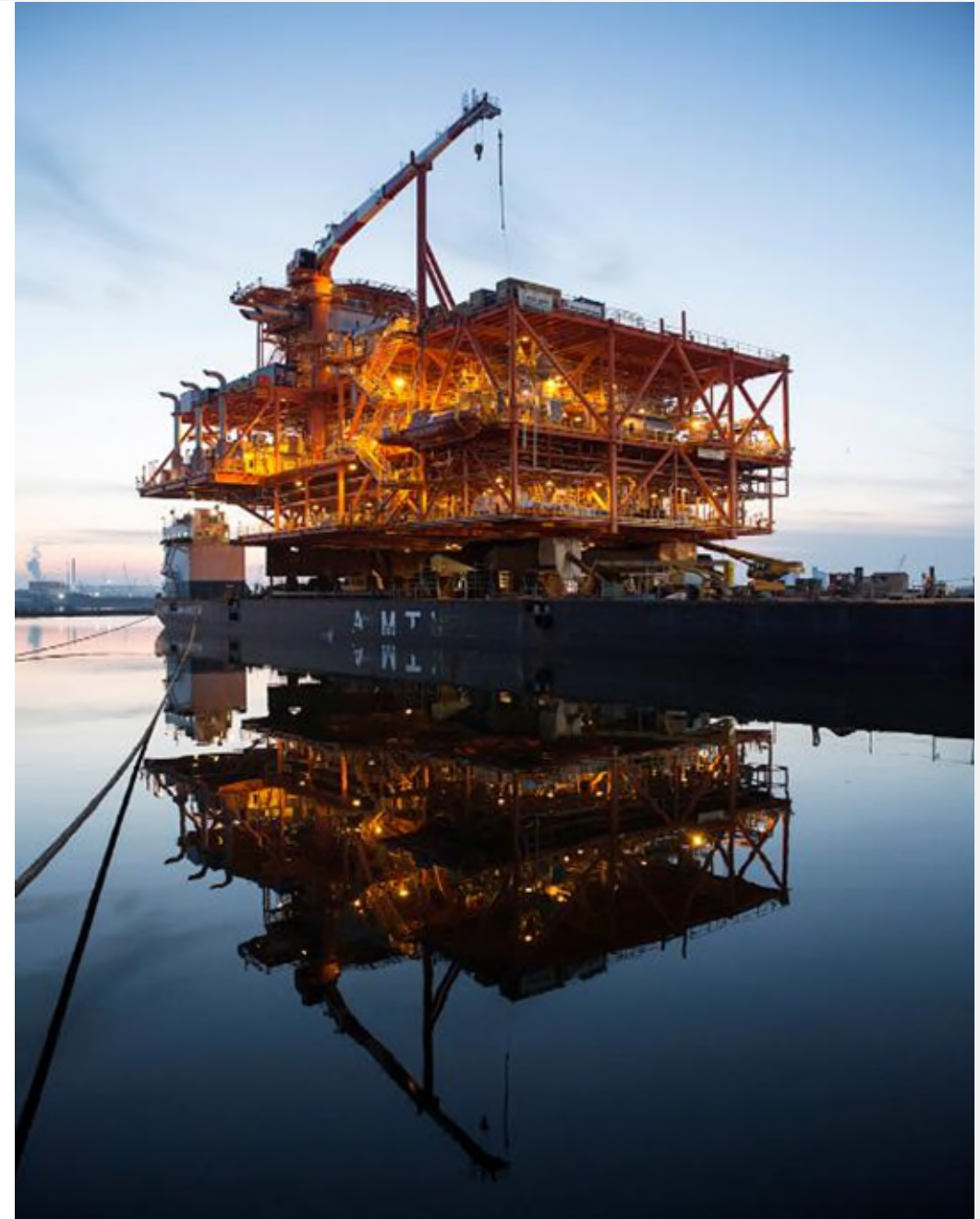




# ENERGY MEETS REALITY

MAIN REFERENCES



# BGUP – Bouri Gas Utilization Project

## Work in progress

### Client

Mellitah Oil & Gas

### Location

Mediterranean Sea, 120 km north of Libya (Block NC-41)

### Main contractor

Saipem S.p.A. Libyan Branch

### Contract

EPCIC – Lump Sum

### Award

August 2023

### Ready for sail away /

### Completion date

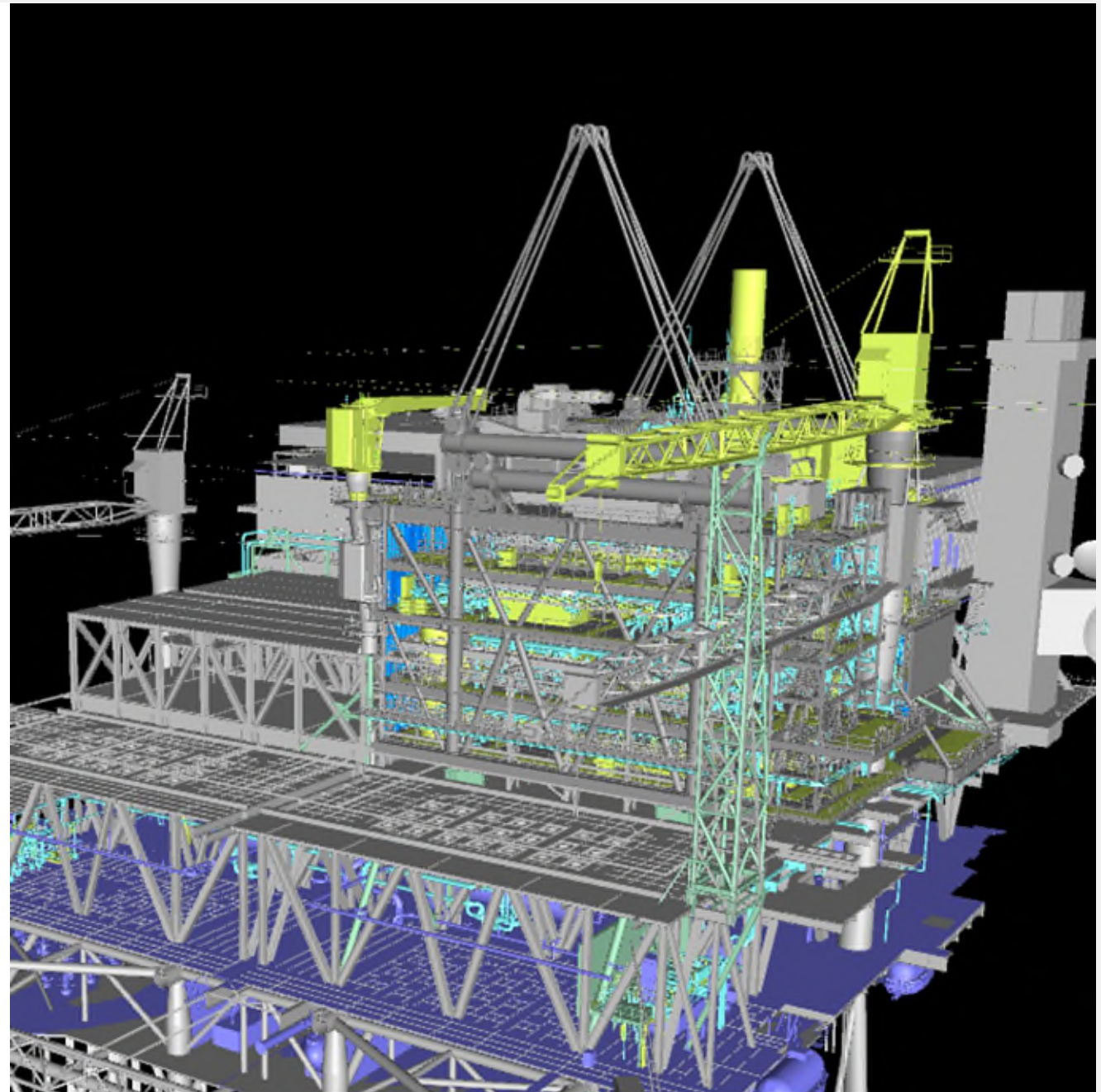
2025/2026

### Scope of work

DP4: New Gas Recovery Module, pig traps, 14" & 10" risers, tie-ins, LQ/TR upgrade  
DP3: Hang-off module, 14" riser, tie-ins  
Sabratha: reconditioning of existing 10" facilities

### Technical Data

GRM: 4600 t  
Hang-off modules: 440 t  
Brownfield: 430 t  
Offshore campaign ≈ 2 y



# RAVENNA FSRU TERMINAL

## Work in progress

### Client

Snam FSRU Italia

### Location

Adriatic Sea - off the coast of Ravenna, Italy

### Main contractor

Consortium: Rosetti Marino S.p.A.,  
Saipem S.p.A., Micoperi S.r.l.

### Contract

EPCIC – Lump sum

### Award

July 2023

### Completion date

December 2024

### Scope of work

Engineering, procurement,  
construction, installation &  
commissioning of a jacket,  
topside, mooring dolphins,  
gangways and foundation piles

### Technical Data

Jacket (30m x 33m, H= 19m)

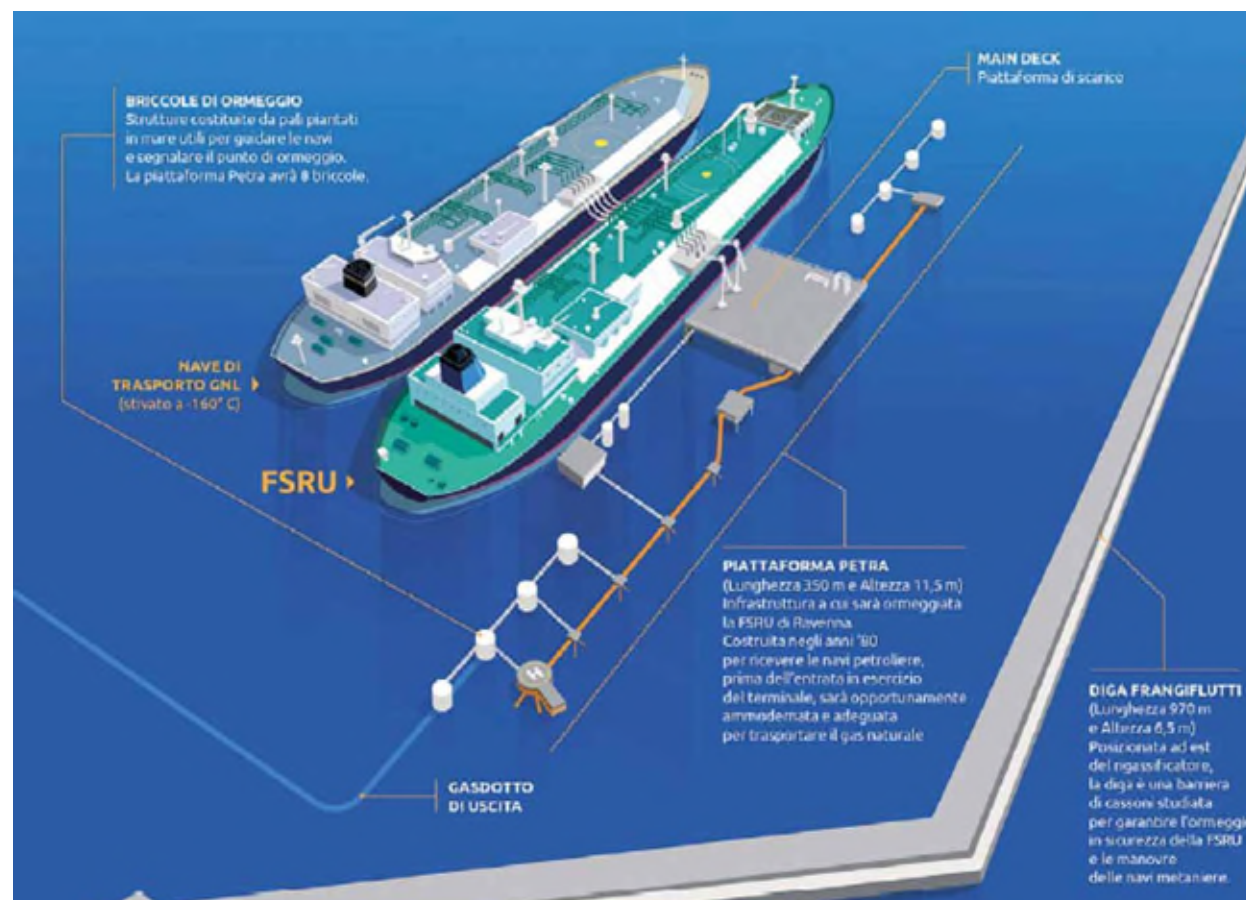
660 tons

Topside (48m x 54m) 1.660 tons

Gangways – 990 tons

Dolphins – 850 tons

Piles – 10.000 tons





# BASELOAD POWER HUB

(H2 PRODUCTION, H2 BATTERY STORAGE, POWER MANAGEMENT SYSTEM FOR WIND FARMS, RENEWABLE POWER GENERATION ENHANCEMENT)

## Work in progress

### Client

CrossWind – joint venture between Shell (80%) and Eneco (20%)

### Location

Hollandse Kust Noord offshore windfarm, 18.5 kilometres off the Dutch coast.

### Main contractor

Rosetti Marino S.p.A.

### Contract

EPCIC Lump sum

### Award

10<sup>th</sup> July 2023

### Completion date

14<sup>h</sup> November 2025

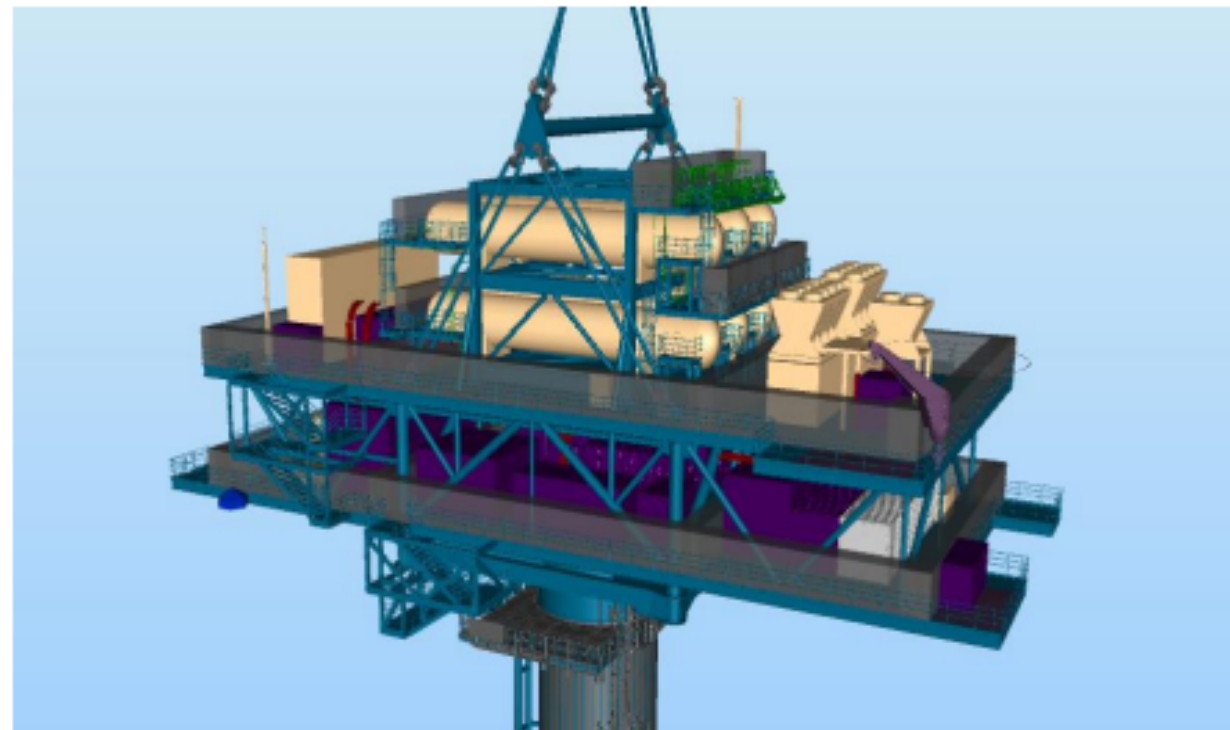
### Scope of work

Detailed design, procurement of material and equipment, construction work, transport and installation at sea, commissioning and start-up of the platform.

### Technical Data

Technologies to be deployed:

- 1 MWe/5 MWhe lithium-ion BESS
- 2.5 MW electrolyser
- 1,200 kg of 30-40 barg H2 gas storage
- 1.0 MWe fuel cell
- Power Management System
- HV Switchgear 66kV
- Transformers 66/6.6 kV/480V
- Control System, F&G
- Water Treatment Plant





# CAN/AN PRILLING TOWER EMISSION ABATEMENT PROJECT FOR YARA PLANT - Ravenna

Work in progress

**Client**  
Yara Italia S.p.A.

**Location**  
Ravenna (Italy)

**Main contractor**  
Rosetti Marino S.p.A.

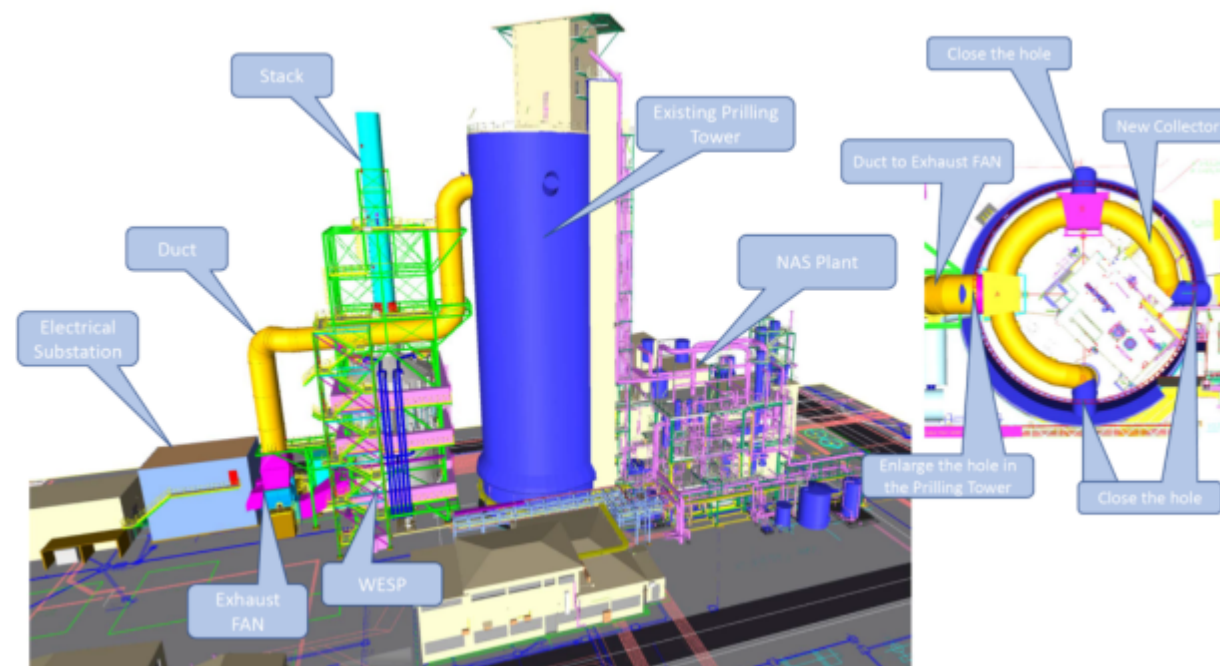
**Contract**  
EPCm Services

**Award**  
January 2023

**Ready for Commissioning**  
Ottobre 2024

**Scope of work**  
Engineering, Procurement and Construction management services (EPCm) for the execution of the CAN/AN Prilling Tower Emission Abatement Project

**Technical Data**  
Piles: N. 68 (2000 M)  
Concrete: 900 M<sup>3</sup>  
Structures: 320 TON  
Equipment: 50 TON  
Piping, valves: 20,5 TON



# NORDSEE II OFFSHORE WIND FARM JACKET

Work in progress

**Client**

Chantiers de L'Atlantique

**Final client**

RWE Renewables

**Location**

Germany - Offshore North Sea

**Main contractor**

Rosetti Marino S.p.A.

**Contract**

ePC / Provisional Sum

**Award**

July 2023

**Ready for sail away**

July 2025

**Scope of work**

Fabrication Engineering,  
Procurement, Construction,  
Mechanical Completion, Testing and  
Load-out of one (1) jacket

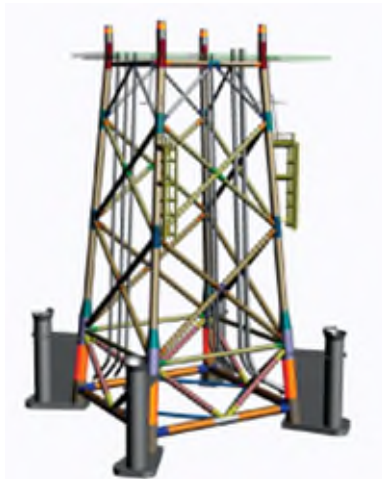
**Technical Data**

Four (4) legged Jacket:

- height: 60 m
- weight: 2.000 tons

Four (4) Piles:

- 72 m x 2.5m, thk = 50/90mm
- weight: 4 x 305 tons



# GODEWIND 4 OFFSHORE WIND FARM TRANSITION PIECE

Work in progress

**Client**

Chantiers de L'Atlantique

**Final client**

RWE Renewables

**Location**

Germany - Offshore North Sea

**Main contractor**

Rosetti Marino S.p.A.

**Contract**

ePC / Provisional Sum

**Award**

September 2023

**Ready for sail away**

July 2025

**Scope of work**

Fabrication Engineering, Procurement,  
Construction, Mechanical Completion,  
Testing and Load-out of one (1)  
transition piece

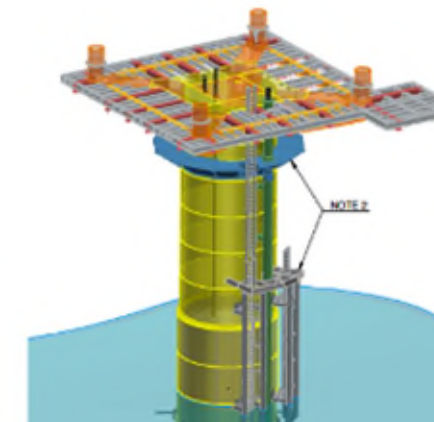
**Technical Data**

Height: 30 m

Main tube dia: 7.5 m (thk 75/85 mm)

Skirt dia: 7.85 m ( thk 50/60 mm)

Footprint cellar deck (between axis):  
15m x 15m ( max 28,5 x23,5)





# RATIONALIZATION OF THE RUBBER PRODUCTION FACILITIES FOR THE VERSALIS PLANT - Ravenna

Work in progress

**Client**

ENI Versalis SpA

**Location**

Ravenna (Italy)

**Main contractor**

Rosetti Marino S.p.A.

**Contract**

EPC/Lump sum

**Award**

March 2023

**Ready for Commissioning**

March 2024

**Scope of work**

Detail design, procurement, construction and pre-commissioning of onshore rubber material production plant (NEOCIS & SOL)

**Technical Data**

Piles: N. 586 (7.400 M)

Concrete: 4.076 M<sup>3</sup>

Structures: 670 TON

Equipment: 274 TON

Piping, valves: 323 TON

Passive Fire Protec.: 940 M<sup>2</sup>

Insulation: 2770 M<sup>2</sup>

Painting: 22.200 M<sup>2</sup>





# LOW CARBON SOLUTIONS

Work in progress

## Emitters

ENI Versalis, YARA, CABOT

## Technical Providers

Baker Hughes - Rosetti Marino -  
Giammarco Vetrocoke

## Location

RAVENNA (2) and FERRARA (1)

## Start date

October 2022

## Expected completion date

Q4 2026

## Technical Data

Total captured and stored CO<sub>2</sub>:  
700.000 tons/y

## Project

Carbon Capture and Storage  
(CCS) in Ravenna e Ferrara  
Petrochemical Plants  
consisting CO<sub>2</sub> capture plants,  
collection network, final CO<sub>2</sub>  
compression and offshore  
storage in depleted gas  
reservoirs (ENI assets)

## Scope of work

feasibility study, assistance for  
financial proposal submission  
to European Innovation Fund

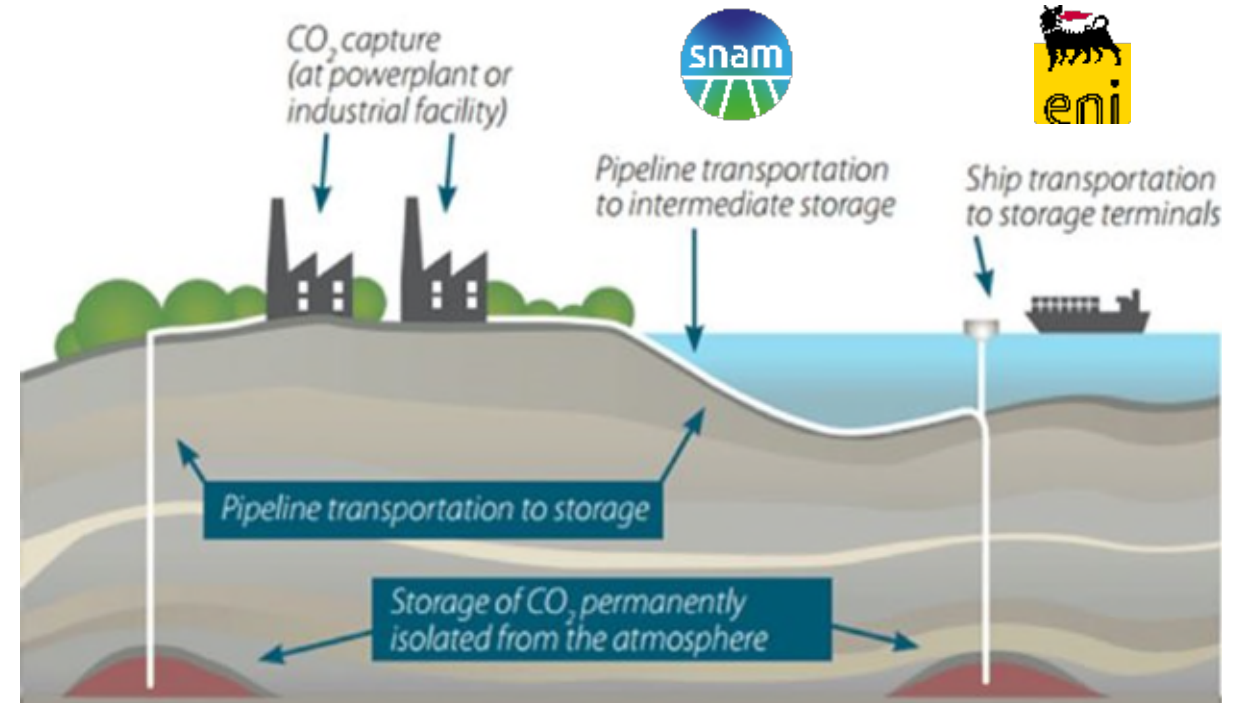
## Next steps

FEED Package, Detail design,  
Procurement and Construction  
of the N°3 Carbon Capture  
plants

## Emitters



## Technical Providers



# FENIX PROJECT – EPC OF ONE OFFSHORE WELLHEAD PLATFORM

## Completed

### Client

Total Austral SA

### Location

Tierra del Fuego (Argentina)

### Main contractor

Rosetti Marino S.p.A.

### Contract

EPC/Lump sum

### Award

30/03/2022

### Ready for sail away

Deck: January 2024

Jacket: November 2023

### Scope of work

Engineering, Procurement,  
Construction, Commissioning,  
Load Out & Seafastening of one  
offshore wellhead platform

### Technical Data

A 4-legged jacket to be installed in approx. 71 m water depth with associated appurtenances such as piles, disposal tube, anodes, etc., incl. pre-installed risers, J-tubes and facilities for future subsea wells.

A four-legged deck incl. well flow lines, production manifold, multiphase meters, pig launcher for the export pipeline, cold vent network, closed and open drain systems, walkways, stairs, helideck, access platforms, technical room / accommodation, crane, fuel gas skids etc.

Net weight:

Jacket 1.537 t

Piles (x4) 1.104 t

Total topside 1.385 t



# EPCIC8: FDBN F-Location Debottlenecking Project

Completed

**Client**  
North Oil Company

**Location**  
Al Shaheen field, Offshore Qatar

**Main contractor**  
Rosetti Marino S.p.A.

**Contract**  
EPCIC/Lump Sum

**Award**  
June 2021

**Completion Date**  
April 2024

**Scope of work**  
Detailed Engineering,  
Procurement, Supply,  
Construction, Load-out, Sea-  
fastening, Transportation and

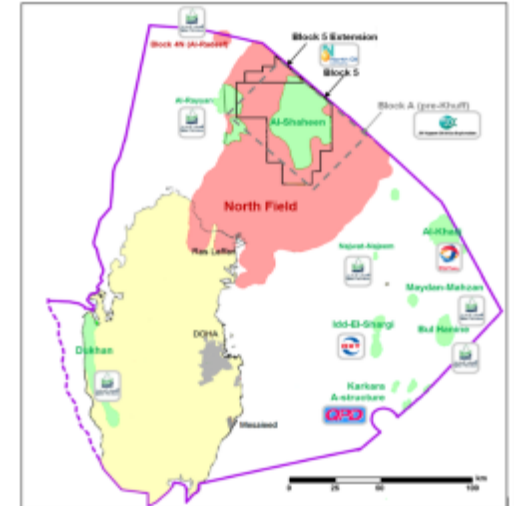
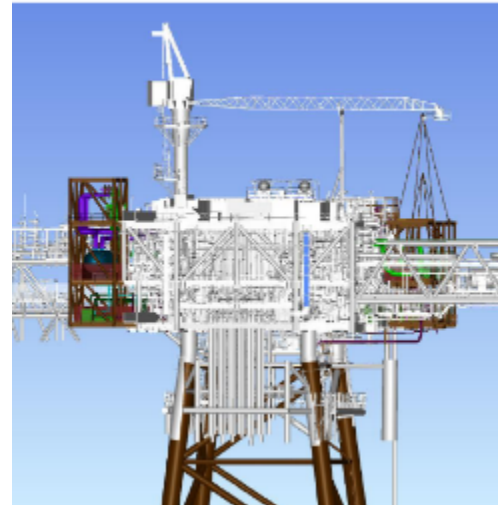
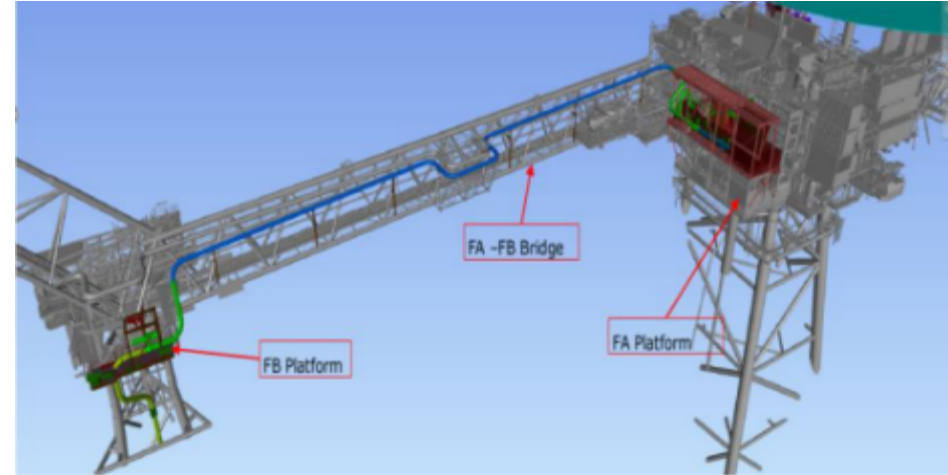
Installation at SITE,  
Pre-Commissioning and further  
Hook-Up and Commissioning at  
SITE of the Main Components  
and the integration on the existing  
facilities.

## Technical Data

Integration of a new subsea pipeline and riser tie-in from the new CPP and brownfield upgrade scope of existing FA and FB facilities at F-Location.

Main components are:

- KOD Module;
- Pig Launcher Module;
- Deck extension on FB;
- Piping on bridge FA-FB.





# REVAMPING FOR SINGLE POINT MOORING SYSTEMS 1 AND 2 AND BUOY OPERATING PLATFORM

Work in progress

## Client

NAOC  
(Nigeria Agip Oil Company)

## Location

Niger Delta (Nigeria)

## Main contractor

Rosetti Pivot Ltd

## Contract

EPCI

## Award

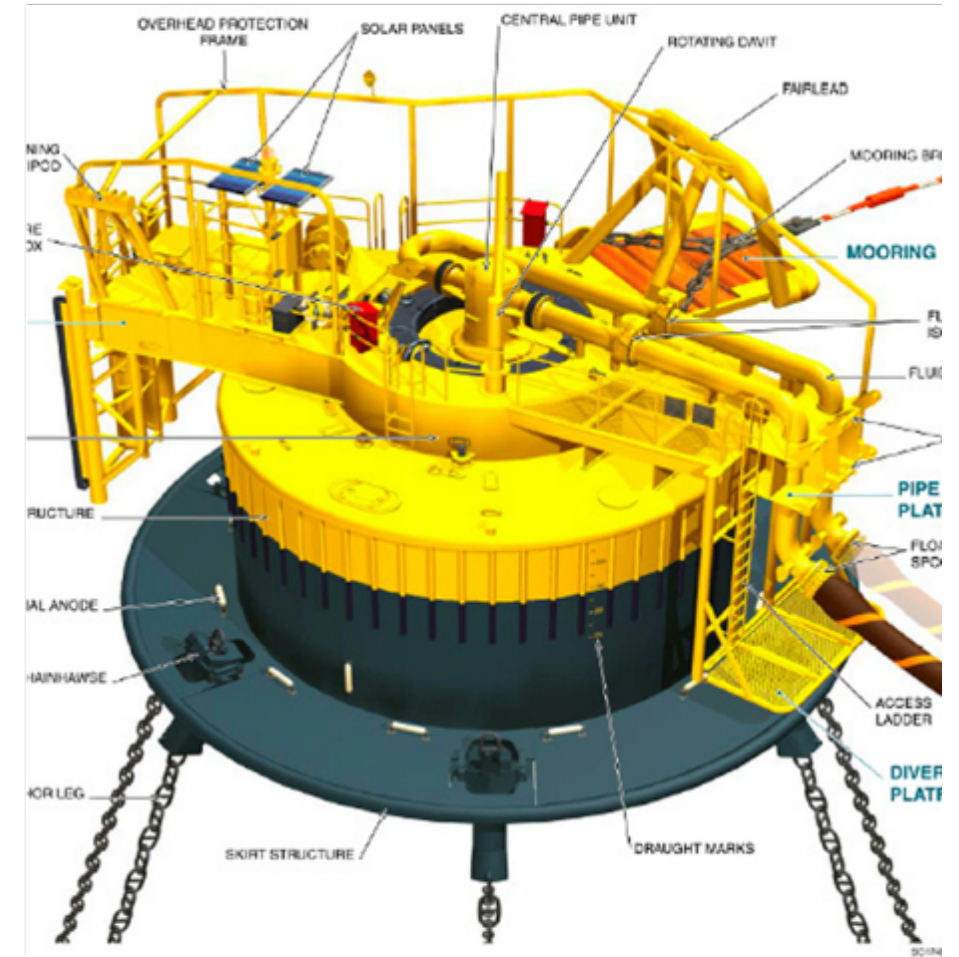
20 September 2021 for SPM 2  
01 February 2022 for SPM 1

## Ready to sail away

September 2022 for SPM2  
January 2023 for SPM1

## Scope of work

Extraordinary maintenance for  
Single Point Mooring Systems  
1 and 2 and Buoy Operating  
Platform



# BRASS BUOY SPM 2 REPLACEMENT PROJECT

Work in progress

## Client

NAOC  
(Nigeria Agip Oil Company)

## Location

Niger Delta (Nigeria)

## Main contractor

Rosetti Pivot Ltd

## Contract

EPCI

## Award

April 2022

## Ready to sail away

December 2023

## Scope of work

Procurement and In-Country Assembly of new SPM2 Buoy, In-country Fabrication of PLM, Anchor Piles, System Flushing and Isolation prior to disconnection. Decommissioning and towing out of the existing system, installation of new Buoy, PLEM and ancillaries. Commissioning and classification of the new system, Supply of Capital Spares and geotechnical and geological survey.

## Technical Data

Approx. weight 285 tons

Dimensions

- Buoy Body Diameter 12 Mt
- Skirt Diameter 16 Mt
- Buoy Body Height 5.3 Mt



# ISND – PH5.1B OFFSHORE HOOK UP SERVICE

Completed

**Client:**  
Qatar Energy

**Location:**  
Offshore Qatar

**Main Contractor:**  
Saipem S.p.A.

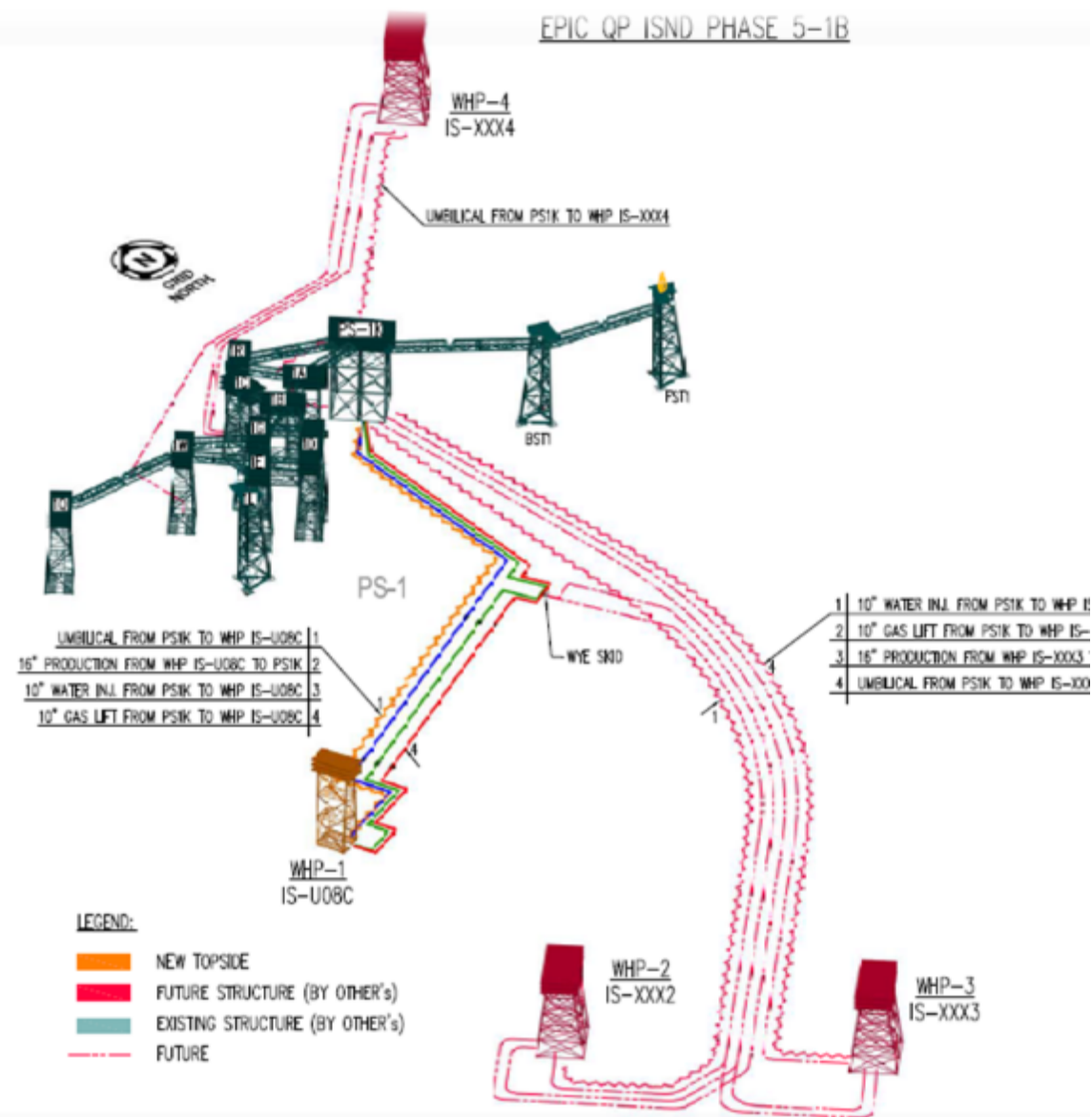
**Contract**  
EPCm

**Award:**  
April 2022

**Completion Date:**  
July 2023

**Scope of Work:**  
Technical Services:  
Preparation of Job cards, hook  
up services for WHP-1 topside  
and brownfield modification on  
PS-1K

**Tot. Manhours: Approx. 250.000**





# CALVADOS OFFSHORE WIND FARM PRE-PILED JACKET

Completed

**Client**  
[Chantiers de L'Atlantique](#)

**Final client**  
Eoliennes offshore du Calvados

**Location**  
France – offshore Calvados

**Main contractor**  
Rosetti Marino S.p.A.

**Contract**  
[ePC](#) / Provisional Sum

**Award**  
May 2021

**Ready for sail away**  
September 2022

**Scope of work**  
Fabrication Engineering,  
Procurement, Construction,  
Mechanical Completion, Testing  
and Load-out of one (1) jacket

**Technical Data**  
Four (4) legged Jacket:  
• Height: 50 m  
• Weight: Approx. 1.250 tons

**Tot. Manhours: 144,000**



# FECAMP OFFSHORE WIND FARM PRE-PILED JACKET

Completed

**Client**  
[Chantiers de L'Atlantique](#)

**Final client**  
[Eolien](#) Maritime France

**Location**  
France – offshore [Fécamp](#)

**Main contractor**  
Rosetti Marino S.p.A.

**Contract**  
[ePC](#) / Provisional Sum

**Award**  
October 2020

**Ready for sail away**  
April 2022

**Scope of work**  
Fabrication Engineering,  
Procurement, Construction,  
Mechanical Completion, Testing  
and Load-out of one (1) jacket

**Technical Data**  
Four (4) legged Jacket:  
• height: 60 m  
• approx. weight: 1.500 tons

**Tot. Manhours: 165,000**



# SAINT NAZAIRE OFFSHORE WIND FARM PRE-PILED JACKET

Completed

**Client**  
[Chantiers de L'Atlantique](#)

**Final client**  
[Eolien](#) Maritime France

**Location**  
France – offshore St. [Nazaire](#)

**Main contractor**  
Rosetti Marino S.p.A.

**Contract**  
[ePC](#) / Provisional Sum

**Award**  
November 2019

**Ready for sail away**  
May 2021

**Scope of work**  
Fabrication Engineering,  
Procurement, Construction,  
Mechanical Completion, Testing  
and Load-out of one (1) jacket

**Technical Data**  
Four (4) legged Jacket:  
• height: 48 m  
• approx. weight: 1.150 tons

**Tot. Manhours: 176,000**



# WHP D33 PROJECT

## Completed

### Client

Lukoil-KMN

### Location

Kaliningrad (Russia)

### Main contractor

ooo Rosetti Marino Projekt

### Contract

EPCIC Lump sum

### Award

June 2021

### Completion date:

Jacket – July 2022

Topside – April 2023

### Scope of work

Project management, detail engineering, procurement, construction, mechanical completion, onshore

commissioning, load-out, transportation, installation, Hook Up and offshore commissioning of Wellhead Platform and Jacket

### Technical Data

Topside: Wellhead platform (12 wells + 2 future), : 55x45 meters (LxW)

Jacket: 4 legs, height 90 Meters

Weights:

Topside approx. 5500 tons

Jacket approx. 3100 tons

Piles approx. 1150 tons





# TYRA FUTURE REDEVELOPMENT PROJECT

## Completed

**Client**

TOTAL DENMARK A/S

**Location**

NORTH SEA

**Main contractor**

Rosetti Marino SPA

**Contract**

EPC Lump sum

**Award**

December 2017

**Ready for sail away**

February 2022

**Scope of work**

Project management, HSEQ management, interface management, design, engineering,

procurement, construction, preservation, mechanical completion, onshore commissioning, load-out and sea fastening of the TEH Topside. Certification Service Contract to DNV GL and novation of ICSS (Siemens), Diesel Generators (Framo), Fire Water Pumps (Framo).

**Technical Data**

Topside - Living Quarters (88 POB), Utility Deck and Helideck: 39x48x35 meters (LxWxH)

Weight: approx. 5,000 tons

**Tot. Manhours: 2,880,000**





# REVAMP PROGRAM PROJECTS AT MPN FIELD LOCATIONS

Completed



## **Client**

MOBIL PRODUCING NIGERIA  
UNLIMITED

## **Location**

Idoho Field, approx 50 km South  
of Nigerian Coast

## **Main contractor**

ROSETTI PIVOT LTD

## **Contract**

Fixed Term EPC  
Outline Agreement

## **Award**

Feb 2016

## **Ready for offshore mobilization**

October 2018

## **Scope of work**

Project Management, HSEQ  
Management, Interface  
Management, Construction and  
Installation Engineering,  
Procurement, Onshore  
Fabrication, Offshore  
Demolition/Installation and Pre-  
commissioning.  
Scope of work - mostly like-for-

like structural and piping  
replacement - covers the main  
deck, cellar deck and spider deck

## **Technical Data**

### Piping

70 ton approx.

### Structures

260 ton approx

### Mechanical

Pig Receiver, Sump Tank

### E&I

MOV's, Line Instruments  
and Transmitters

160 POB [at peak]

# TOLMOUNT PLATFORM

## EPCIC SERVICES

Completed

**Client**

HUMBER GATHERING SYSTEM  
LIMITED

**Location**

TOLMOUNT FIELD - NORTH SEA

**Main contractor**

Rosetti Marino SPA

**Contract**

EPCIC Lump sum

**Award**

May 2018

**Ready for sail away**

September 2020

**Scope of work**

Project management, HSEQ  
management, interface  
management, design,  
engineering, procurement,

construction, mechanical  
completion, onshore  
commissioning, load-out,  
transportation, installation, Hook  
Up and offshore commissioning  
of Wellhead Platform and Jacket.

**Technical Data**

Topside: NUI - Wellhead  
platform (4 wells + 2  
future), : 32x34 meters  
(LxW)

Jacket: 4 legs, height 75  
Meters

Weight:

Topside approx. 1800 tons  
Jacket approx. 2200 tons  
Piles approx. 2200 tons

**Tot. Manhours: 1,200,000**





# EPICC OF NFB OFFSHORE ACCOMMODATION EXPANSION PROJECT

## Completed

### Client

QATARGAS OPERATING  
COMPANY LIMITED

### Location

NORTH FIELD BRAVO

### Main contractor

Rosetti Marino SPA

### Contract

EPICC Lump sum

### Award

April 2017

### Ready for sail away

February 2020

### Scope of work

Conceptual and Detail Design,  
Procurement, Installation,  
Construction, Commissioning,

Brownfield

### Technical Data

No. 1 ALQ Jacket (N.4 legs;  
H=59mt)

total weight: 754 t

No. 4 ALQ Piles

(D=1,524 mt – thk = 8-50mm;  
L=163,7mt)

total weight: 1,302 t

No. 1 ALQ Topside (N.5 levels)  
total weight: 2,253 t

No. 1 ALQ Helideck (helipad in  
steel structural)

total weight: 174 t

No. 6 Bridges (from LQ to new  
ALQ: L= 10mt)

total weight: 37 tons

**Tot. Manhours: 2,040,000**





# BALANCE OF PLANT FOR 2 NEW STEAM GENERATORS

Completed

**Client**  
VERSALIS

**Location**  
Porto Marghera (Italy)

**Main contractor**  
Rosetti Marino SPA

**Contract**  
ePC Lump sum

**Award**  
May 2016

**Ready for commissioning**  
November 2017

**Scope of work**  
Detail design, Procurement,  
Construction and  
Commissioning of Balance of  
Plant for 2 new steam

generators, civil works,  
mechanical,  
electrical/instrumentation,  
painting and insulation  
activities included.

**Technical Data**  
Piping: 560 Tons.  
N. 220 Tie-ins  
Steel Structures: 200 Tons.  
N. 3 Pumps  
N. 2 Tanks modifications  
Painting: 7,600 Sqm.  
Insulation: 8,600 Sqm.  
Cables E&I: 55,000 Mt.  
Concrete: 2,000 Cum.

**Direct Manhours: 300,000**  
**Manpower peak: 100**



# Remote Instrument Enclosure (RIE) and LSA

Completed

## Client

PSNK (Wood Group)/ TCO

## Contract

epC Unit Rates/Lump sum

## Award

June 2017

## Ready for sail away

First RIE : October 2019

Last RIE : April 2020

**Costruction site:** KCOI Yard,  
Aktau

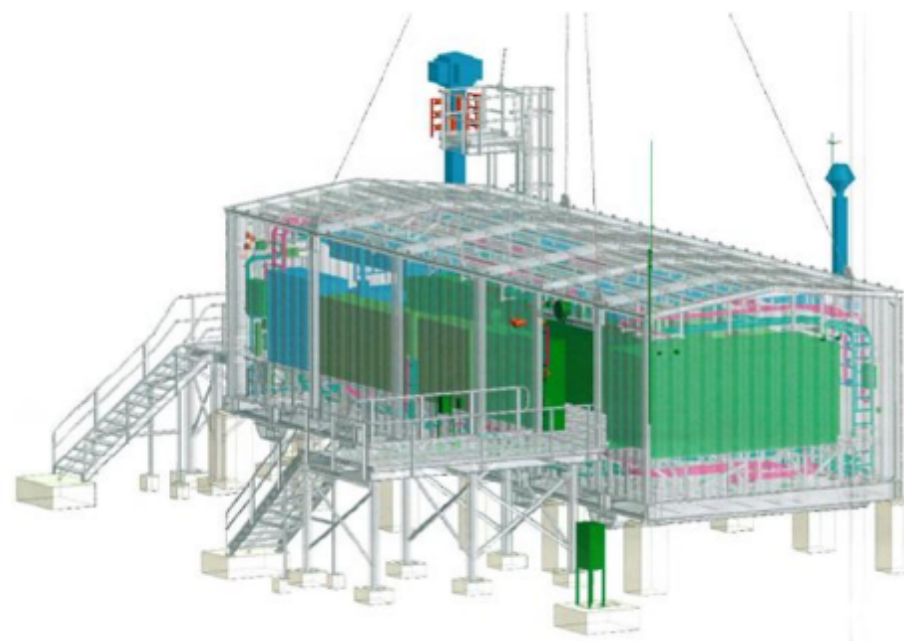
## Final delivery Location

Atyrau / Tengiz

## Scope of Work description:

- Shop drawings
- Procurement
- Installation of Automation systems (Honeywell-PCS/ESD/F&G)
- Fabrication, Integration, Testing, Inspection
- Electrical and Instrumentation works
- Pre-commissioning and Commissioning
- Delivery FCA/FOB

BUILDING TOT WEIGHT  
[ton] 1750



RIE No.	Size (L x W x H)	Weight (ton)	Description
2051	18.9 x 6.7 x 5.1	110	Multi Well Pad DP20 – Injection Remote Instrument Enclosure
2057	18.9 x 6.7 x 5.1	110	Multi Well Pad DP21 – Injection Remote Instrument Enclosure
2055	18.9 x 6.7 x 5.1	110	Multi Well Pad DP22 – Injection Remote Instrument Enclosure
2053	18.9 x 6.7 x 5.1	110	Multi Well Pad DP23 – Injection Remote Instrument Enclosure
2059	18.9 x 6.7 x 5.1	110	Multi Well Pad DP24 – Injection Remote Instrument Enclosure
9105	36.2 x 7.55 x 5.9	315	Steam Boiler 1 & 2 Large Standalone Remote Instrument Enclosure
9106	36.2 x 7.55 x 5.9	315	Steam Boiler 3 & Flare Large Standalone Remote Instrument Enclosure
4001	27.35 x 6.7 x 6.0	200	OGP Dehydration Large Standalone Remote Instrument Enclosure
0303	24.5 x 14.6 x 6.6	320	3GI Injection - Reception Large Standalone Remote Instrument Enclosure
PM4	10.5 x 4,5 x 5,5	50	PM4 Additional RIE

# BAHR ESSALAM PHASE II TOPSIDE REVAMPING

Completed

**Client**

Mellitah Oil & Gas B.V.

**Location**

Sabratha Platform – Block NC41

**Main contractor**

Technip FMC

**Contract**

Lump sum

**Award**

April 2017

**Ready for start up**

February 2018

**Scope of work**

Construction Engineering,  
Procurement of bulk material,  
onshore fabrication, offshore  
construction activities & Floatel

**Technical Data**

No. 1 ALQ Jacket (N.4 legs;  
H=59mt)

Total weight: 754 t

No. 4 ALQ Piles

(D=1,524 mt – thk = 38-  
50mm; L= 163,7mt)

Total weight: 1,302 t

**Tot. Manhours: 146,000**



# EPCI FOR A NEW JACKET FOR SOUTH PARS

Completed

**Client**

PETRO PAYDAR IRANIAN OIL COMPANY

**Location**

IRAN – SOUTH PARS 13 FIELD

**Main contractor**

Rosetti Marino SPA

**Contract**

Fixed UR

**Award**

April 2017

**Ready for sail away**

August 2017

**Offshore installation**

September 2017

**Scope of work**

Conceptual and Detail Design,  
Procurement, Construction,  
Transportation and Installation of  
Jacket SPD13A

**Technical Data**

Nr.1 four-legged jacket with  
well-head module and  
appurtenances  
Total weight: 1.800 t

Nr.4 piles (inside jacket legs)

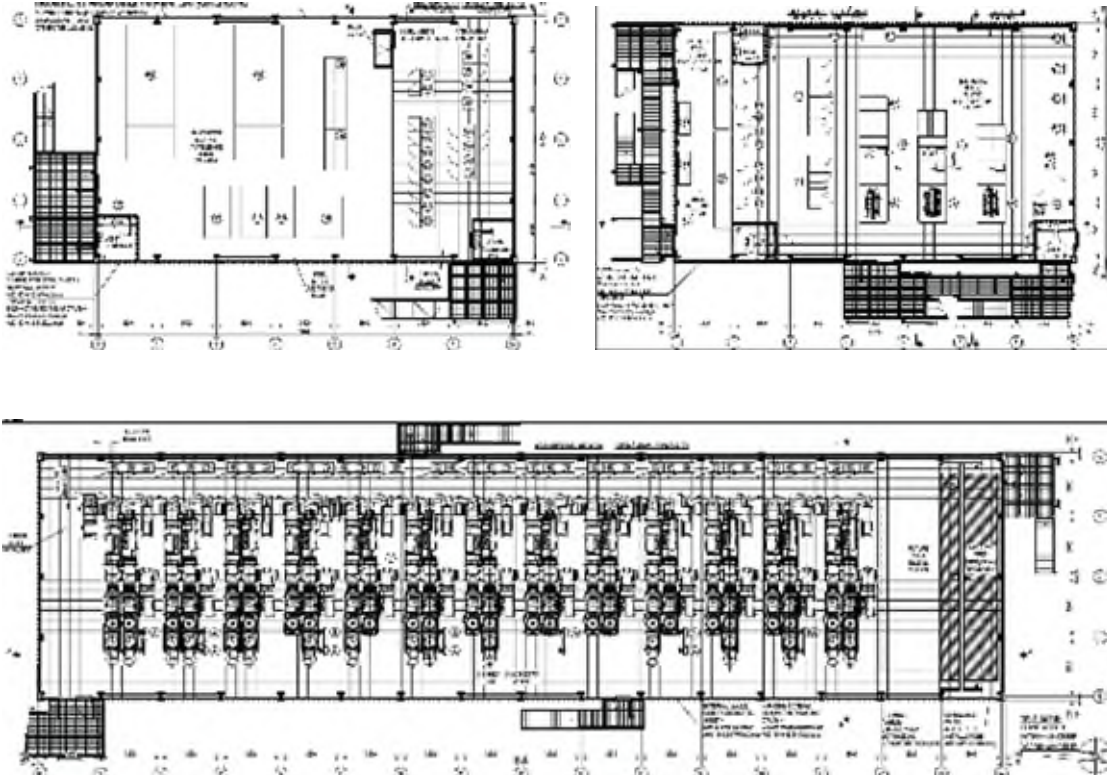
Total weight: 1.400 t

**Tot. Manhours: 139,000**



# 110kV GIS MAIN SUBSTATION 52-SU-3301

Completed



**Client**  
SKEMA SpA

**Final client**  
TENGIZCHEVROIL

**Location**  
KAZAKHSTAN

**Main contractor**  
Rosetti Marino SPA

**Contract**  
EPC/Lump Sum

**Award**  
October 2016

**Ready for sail away**  
August 2018

**Project**  
Future Growth Project, Wellhead  
Pressure Management Project  
(FGP/WPMP)

**Scope of work**  
Structure and Architectural  
Detail Design, Procurement and  
Fabrication, Load out activities  
of a 110kV GIS Substation

**Technical Data**  
BUILDING DIMENSION [m]  
GIS MODULE  
56,3 x 14,60 x 8,644 (h)  
UTILITY MODULE  
24,8 x 14,60 x 8,644 (h)

BUILDING TOT WEIGHT  
[ton] 1300

**Tot. Manhours: 232,000**

# MODULAR 35kV SUBSTATION 51-SU-33004

Completed

## Client

GE Grid Solutions

## Final client

TENGIZCHEVROIL

## Location

KAZAKHSTAN

## Main contractor

Rosetti Marino SPA

## Contract

EPC/Lump Sum

## Award

January 2016

## Ready for sail away

May 2017

## Project

Future Growth Project, Wellhead  
Pressure Management Project  
(FGP/WPMP)

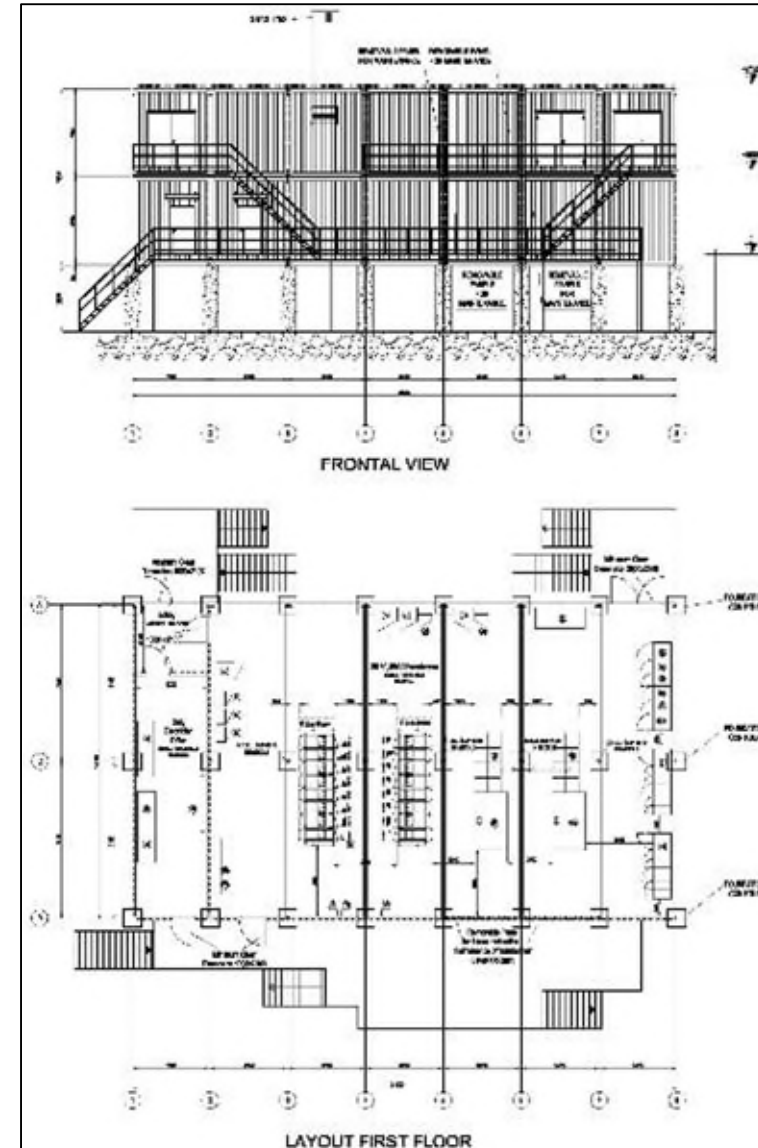
## Scope of work

Detail design, Construction  
Engineering, Procurement,  
Fabrication, Commissioning  
including HV/MV

## Technical Data

BUILDING DIMENSION [m] 24,5 (l)  
x 14.14 (w) x 7,9 (h)  
BUILDING WEIGHT [ton] 414  
The proposed Substation is  
supplied as subdivided in N.14  
modules of indicative dimensions  
(m) 3,5 (W) x14,2 (L) x 3,9 (H)

**Tot. Manhours: 107,000**





# 110kV GIS CORE SUBSTATION

Completed

**Client**  
SKEMA SpA

**Final Client**  
TENGIZCHEVROIL

**Location**  
KAZAKHSTAN

**Main contractor**  
Rosetti Marino SPA

**Contract**  
EPC/Lump sum

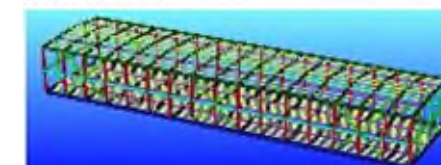
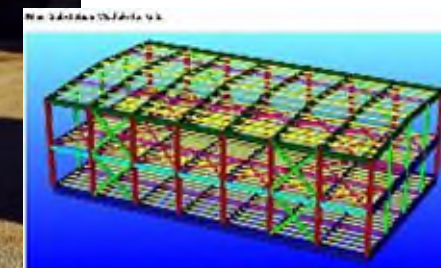
**Award**  
October 2014

**Ready for sail away**  
December 2016

**Scope of work**  
Structure and Architectural  
Detail Design, Procurement and  
Fabrication, Load out activities of  
a 110kV GIS Substation

**Technical Data**  
110 kV Core substation  
Weight: 310 Tons (structures  
only)

**Tot. Manhours: 92,000**



# WHP3 STRUCTURAL MODIFICATIONS – NENÈ OIL FIELD

Completed



**Client**  
ENI CONGO

**Location**  
RAVENNA - ITALY

**Main contractor**  
Rosetti Marino SPA

**Contract**  
EPC

**Award**  
June 2016

**Ready for sail away**  
November 2016

**Scope of work**  
Detail design, Procurement,  
Construction and commissioning  
of WHP3 Platform Jacket and  
Deck for Nenè Oil Field - Congo

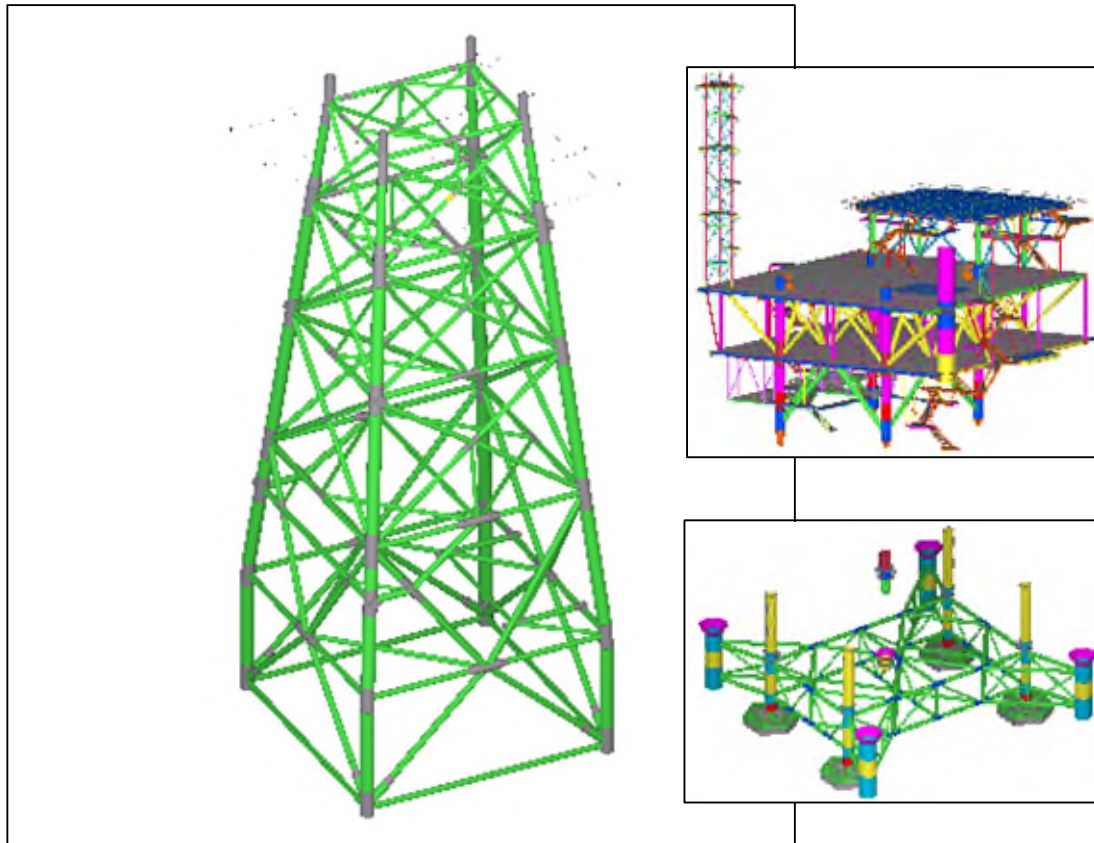
**Technical Data**  
Steel Structures: 650 Tons

Painting: 7,600 Sqm.

**Tot. Manhours: 84,000**

# ZOHR PROJECT

Completed



**Client**  
PETROBEL

**Location**  
Offshore Egypt – Zohr Field

**Main contractor**  
Rosetti Marino SPA

**Contract**  
Unit rates

**Award**  
April 2016

**Ready for sail away**  
Batches between June -  
November 2016

**Scope of work**  
Construction Engineering,  
Procurement and Fabrication  
activities of steel structures for  
Jacket, Foundation  
Piles, Pile Guide Frame (PGF) and  
Deck for ZOHR Central Control

Platform.

**Technical Data**  
Nr. 1 four legged Jacket,  
Nr. 1 topside, nr.1 PGF structure  
and nr.4 foundation piles.  
Jacket 95 m (H) - Weight: 1714  
Tons  
Deck - Weight: 1039 Tons  
Piles - Weight: 927 Tons  
PGF - Weight: 360 Tons

**Tot. Manhours: 18,000**



# MOSE I COMPLETION PROJECT

Completed

**Client**

Consorzio Venezia Nuova

**Location**

Venice – Italy

**Main contractor**

Rosetti Marino SPA

**Contract**

Cost plus fee

**Award**

Feb 2016

**Duration**

1 year

**Scope of work**

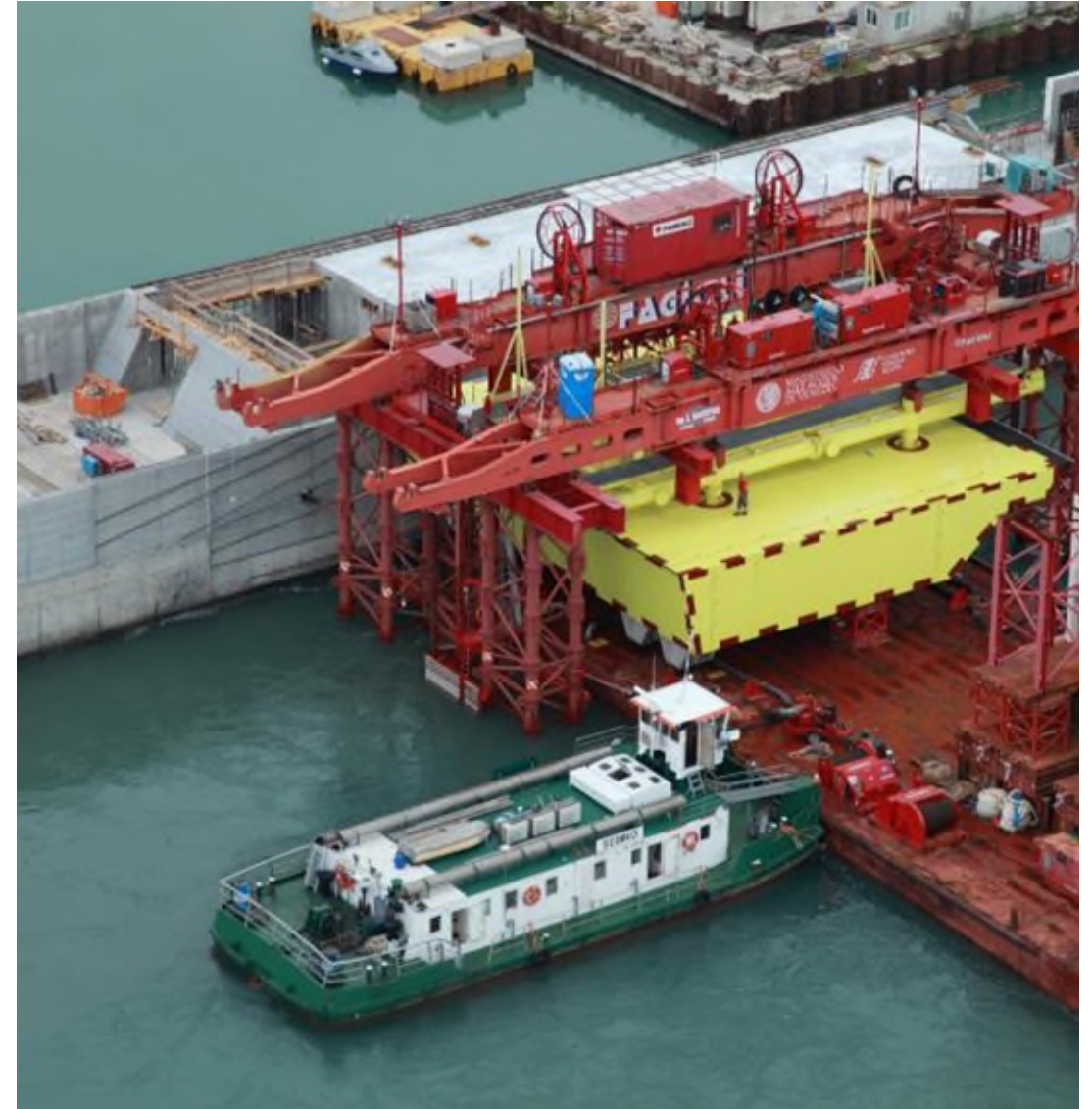
Structural modifications,  
commissioning and Start-up of 4  
leg jack up installation vessel

specifically designed for the  
installation and maintenance of  
dams for Venice. Entire system is  
called MOSE.

Modifications on structures and  
hydraulic systems.  
Technical assistance for  
Mechanical Completion,  
Pre-comm and commissioning.  
Operations and Maintenance.  
Offshore Tests in November 2016;

Operations and maintenance  
program to be agreed (most  
probably a 3 year period starting  
from January 2017)

**Tot. Manhours: 30,000**



# ABU QIR DEVELOPMENT PROJECT

## NAQ Q PIII PLATFORM

Completed

**Client**

Abu Qir Petroleum

**Location**

Offshore Egypt – North Abu Qir  
Field

**Main contractor**

Petrojet

**Nominated Sub.**

Rosetti Marino SPA

**Contract**

EP/Lump Sum

**Award**

October 2014

**Ready for sail away**

July 2016

**Scope of work**

Engineering and Procurement  
activities.

**Technical Data**

nr. 1 four legged Jacket,  
nr. 1 wellhead module and  
topside, nr. 6 gas/oil wells (4 + 2  
future)

Jacket: 40,5 m (H) –Weight: 550  
Tons

Deck: Weight: 2040 Tons

Piles: Weight: 720 Tons

**Tot. Manhours: 160,000**



# DP4 – FPSO INTERFACE WORKS

Completed

**Client**

STX Offshore & Shipbuilding

**Final Client**

MELLITAH OIL & GAS B.V.

**Location**

Bouri Field - Offshore Libya

**Main contractor**

Rosetti Marino SPA

**Contract**

EPIC contract on Turn Key Lump Sum basis

**Award**

October 2014

**Ready for sail away**

February 2016

**Scope of work**

Project Management,  
Engineering (Basic Design review, detailed engineering development & Risks

assessment), Procurement & Inspection Fabrication, Offshore installation and Hook up, Dismantling, installation and Hook up, recommissioning & Commissioning activities.

**Description**

New FPSO will be installed near the platform . Modification and interface works on the platform to be done for new risers connection (HV electrical power cable and 16" inc. process piping)

**Technical Data**

Main new equipment:  
Transformer, UTA, Switchboard, fiber optic, Control&Safety system extension, ESDV.  
E&I, mechanical, structural and piping works to perform.

**Tot. Manhours: 86,000**



# GOLIAT PROJECT

## GOLIAT FPSO

Completed

### Client

KOSSCO LTD (Korea) and MDE (Norway)

**Final Client:** ENI Norge

### Location

Ulsan, South Korea (1° phase)  
Norway, Barents sea (2° phase  
Hook up)

### Main contractor

Rosetti Marino SPA

### Contract

MS  
Daily rates

### Award

January 2014

### Ready for sail away

1st Quarter 2016

### Scope of work

Provision of Services for mechanical completion activities on Goliat FPSO during Construction at Yard (Precommissioning & commissioning – all disciplines) and during Offshore hookup.

### Technical Data

Weight approx. 65.000 Tons,  
diameter 120m, height 76m,  
FPSO with oil storage, sea ballasting system, Gas Turbine Generation and Living quarter

**Manhours 1° phase (Korea):**  
**80.000**

**Manhours 2° phase (Norway):**  
**70.000**



# DRILLING RIG CONVERSION TO WHP PLATFORM

Completed

**Client**  
LOTOS PETROBALTIC

**Location**  
Poland

**Main contractor**  
Rosetti Marino SPA

**Contract**  
EPMS

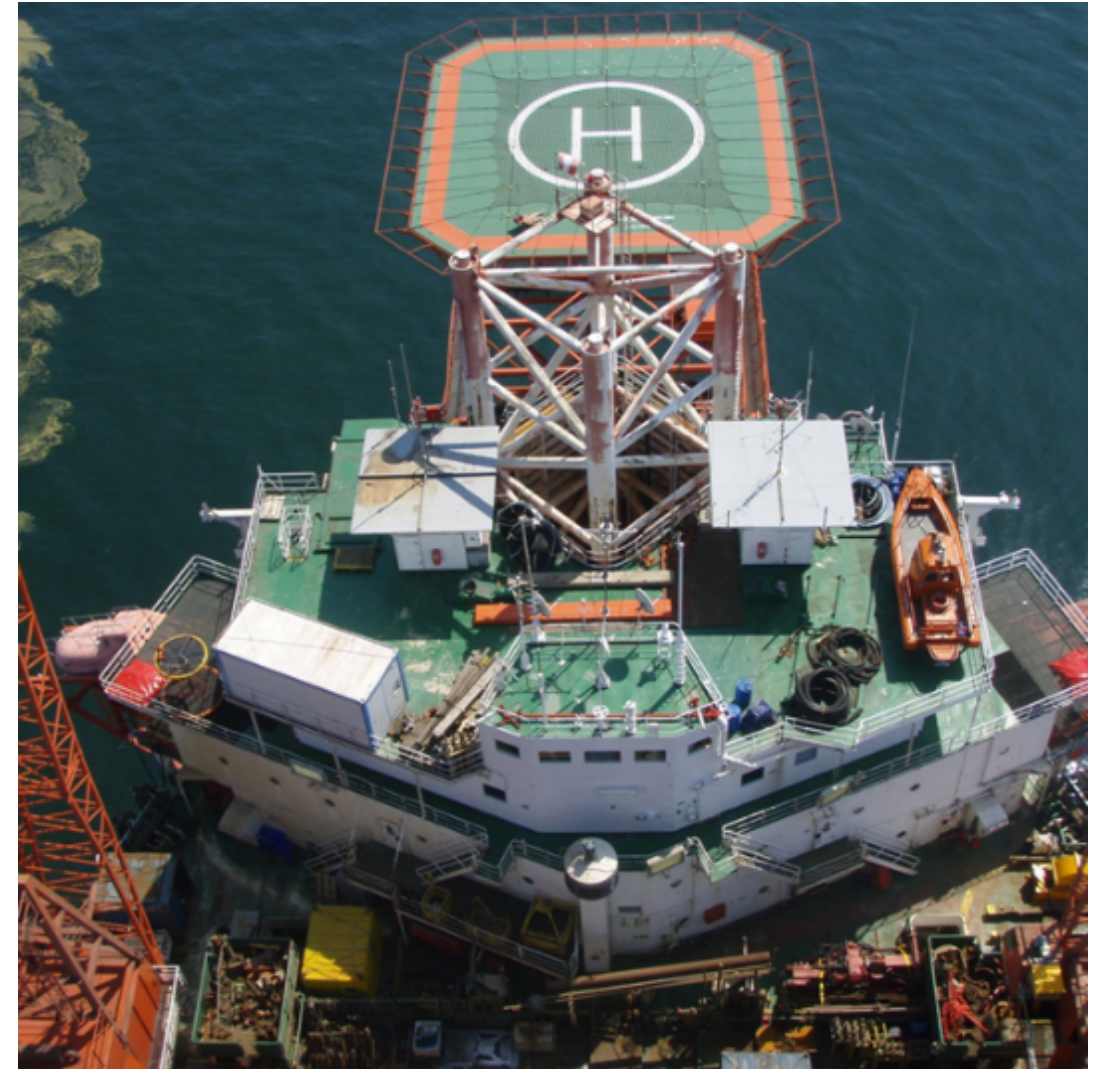
**Award**  
August 2013

**Ready for sail away**  
November 2015

**Scope of work**  
Conversion of drilling rig from  
MODU to production center.  
Engineering, Procurement  
services, management and HUC  
works.

**Technical Data**  
Weight: Approx. 3.000 tons  
new modules and removal  
and reconversion of drilling rig  
Hull and legs

**Tot. Manhours: 293,000**





# MARLIN DEVELOPMENT PROJECT

Completed

**Client**

FOXTROT INTERNATIONAL LDC

**Location**

Offshore Ivory Coast

**Main contractor**

Rosetti Marino SPA

**Contract**

EPC

**Award**

December 2012

**Ready for sail away**

Jacket & piles: August 2014

Deck: March 2015

**Scope of work**

Engineering, Procurement and supply of all material and

equipment, prefabrication, fabrication and assembly, precommissioning, commissioning load out, site hook-up, site commissioning and assistance for start-up of:  
One (1) 4-legged jacket, four (4) skirt piles, A Four (4) deck level Topside and a 20 POB Living Quarter

**Technical Data**

Topside: LxWxH 54x31x20

Weight: 4.500 tons

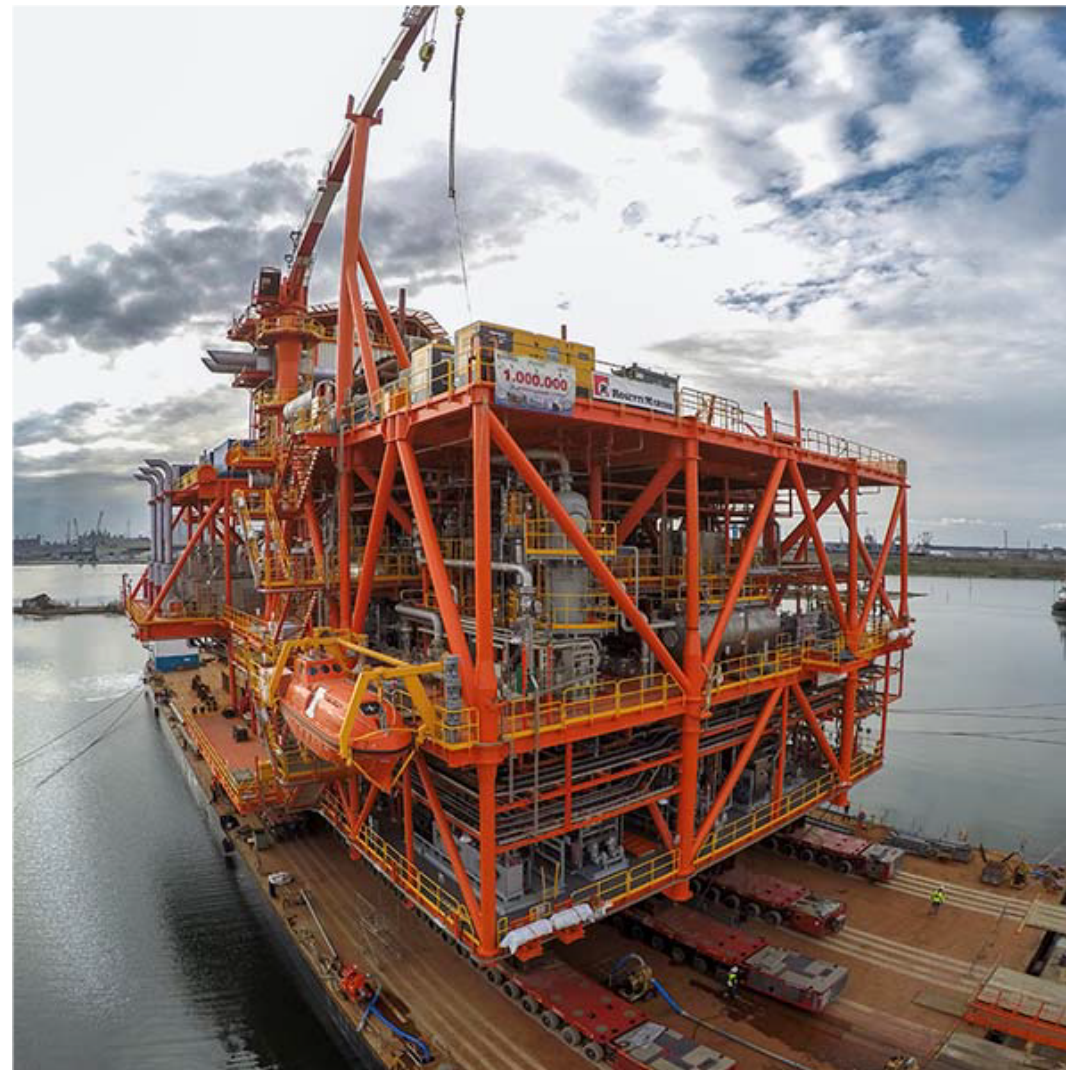
Jacket: H 118 m

Weight: 3.500 tons

(+ 1.300 tons for piles)

Living Quarter: 20 POB

**Tot. Manhours: 940,000**





# ELETTRA AND FAUZIA PLATFORMS

Completed

**Client**

ENI SPA

**Location**

Adriatic Sea

**Main contractor**

Rosetti Marino SPA

**Contract**

EPC

**Award**

April 2013

**Ready for sail away**

April 2014

**Scope of work**

Engineering, procurement,

construction, load-out and sea fastening, transportation to site, hook up, commissioning, preparation of the platform and assistance during dewatering operations, start up and performance tests of Elettra and Fauzia decks.

**Technical Data**

Deck : 20x17x22 (LxWxH)

Weight:

Elettra – Approx. 450 tons

Fauzia – Approx 610 tons

**Tot. Manhours - Elettra: 122,000**

**Tot. Manhours - Fauzia: 186,000**



# IKA & IVANA FIELD DEVELOPMENT PROJECT

## IKA JZ PLATFORM

Completed

**Client**

Inagip doo

**Location**

Offshore Adriatic Sea, Croatian  
Sector

**Main contractor**

Rosetti Marino SPA

**Contract**

EPC

**Award**

November 2012

**Completion date**

July 2014

**Scope of work**

Engineering, Procurement,  
Fabrication, Transportation,  
Offshore Hook-up and  
Commissioning and Start-up  
Assistance.

**Technical Data**

Deck: LxWxH 54x31x20

Weight: 510 tons

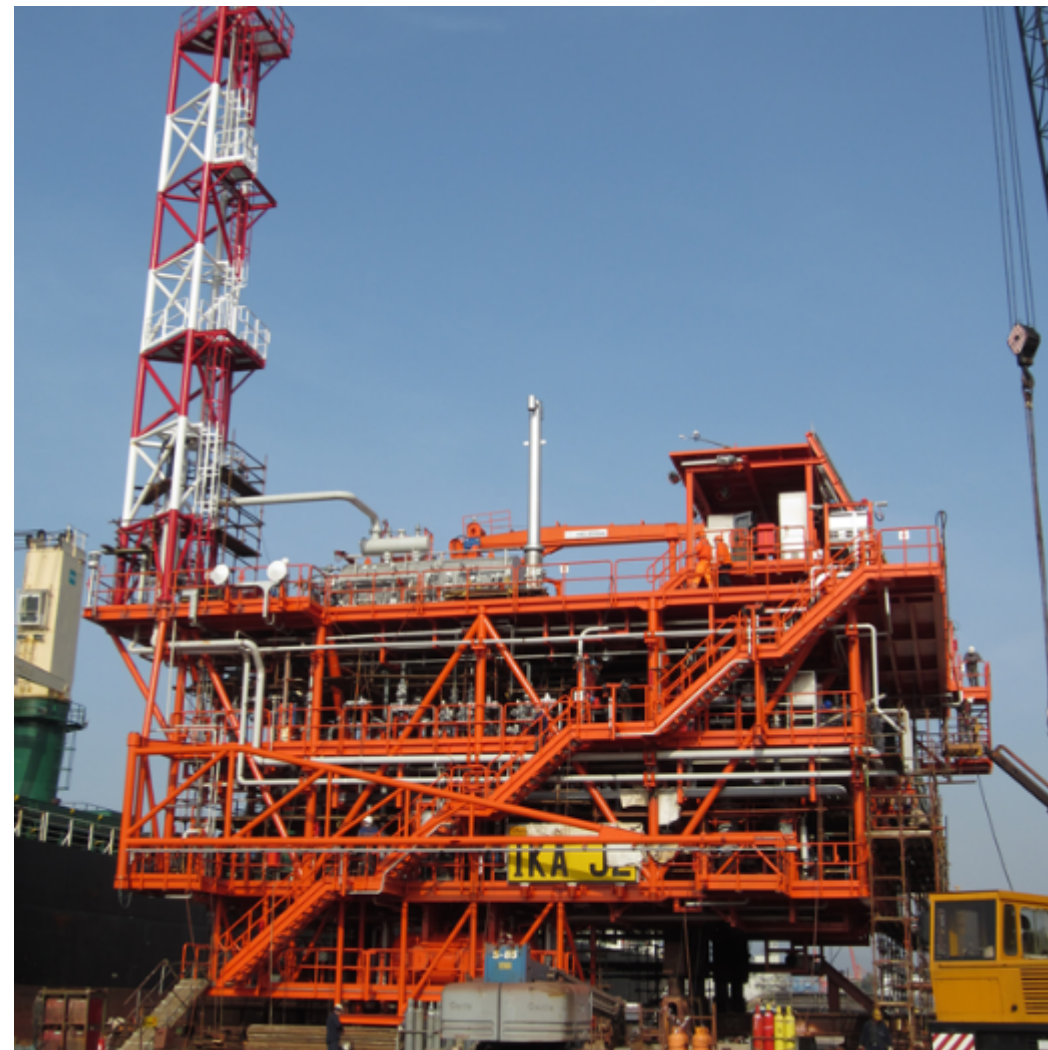
Wellhead module: 78 tons

Three-legged jacket: H 72 m

Weight: 735 tons

Piles: 690 tons

Conductors: 242 tons





# CLIPPER PLQ UPGRADE PROJECT

Completed

**Client**

SHELL UK

**Location**

North Sea UKCS

**Main contractor**

Rosetti Marino SPA

**Contract**

EPC

**Award**

August 2012

**Ready for sale away**

June 2014

**Scope of work**

Engineering, procurement,

fabrication, testing, onshore commissioning, load-out and sea fastening of the Clipper Accommodation Module with integral Utility Deck and Helideck, the link bridge, the jacket and piles.

**Technical Data**

Topsides - Living Quarter (84 POB), Utility Deck and helideck: 50x25x25 (LxWxH)  
Four-legged jacket (weight: 800 tons)  
Weight: Approx. 3000 tons

**Tot. Manhours: 514,000**





# WEST FRANKLIN PROJECT

## Completed

### Client

ELF EXPLORATION UK LTD /  
TOTAL Group

### Location

North Sea, UKCS (240 Km East of  
Aberdeen)

### Main contractor

Rosetti Marino SPA

### Contract

EPCI

### Award

July 2011

### Ready for sail away

June 2013

### Scope of work

Engineering, Procurement,  
Construction, Installation,

Hook-up and Commissioning of  
Topsides for the West Franklin  
platform

### Description

West Franklin topside will be  
used in the extraction of gas and  
condensed crude oil, with 9 high  
pressure and high-temperature  
wellheads, the estimated  
production design rate of West  
Franklin platform is 40,000  
barrels of oil equivalent per day.

### Technical Data

Topside: LxWxH: 40x40x20 mt  
Weight: 3.300 tons

**Tot. Manhours: 707,000**



# ELGIN B PROJECT

Completed

**Client**

ELF EXPLORATION UK LTD /  
TOTAL Group

**Location**

North Sea, UKCS (240 Km East of  
Aberdeen)

**Main contractor**

Rosetti Marino SPA

**Contract**

EPCI

**Award**

July 2011

**Ready for sail away**

June 2013

**Scope of work**

Engineering, Procurement,  
Construction, Installation, Hook-up  
and Commissioning of Topsides  
for the Elgin B Platform

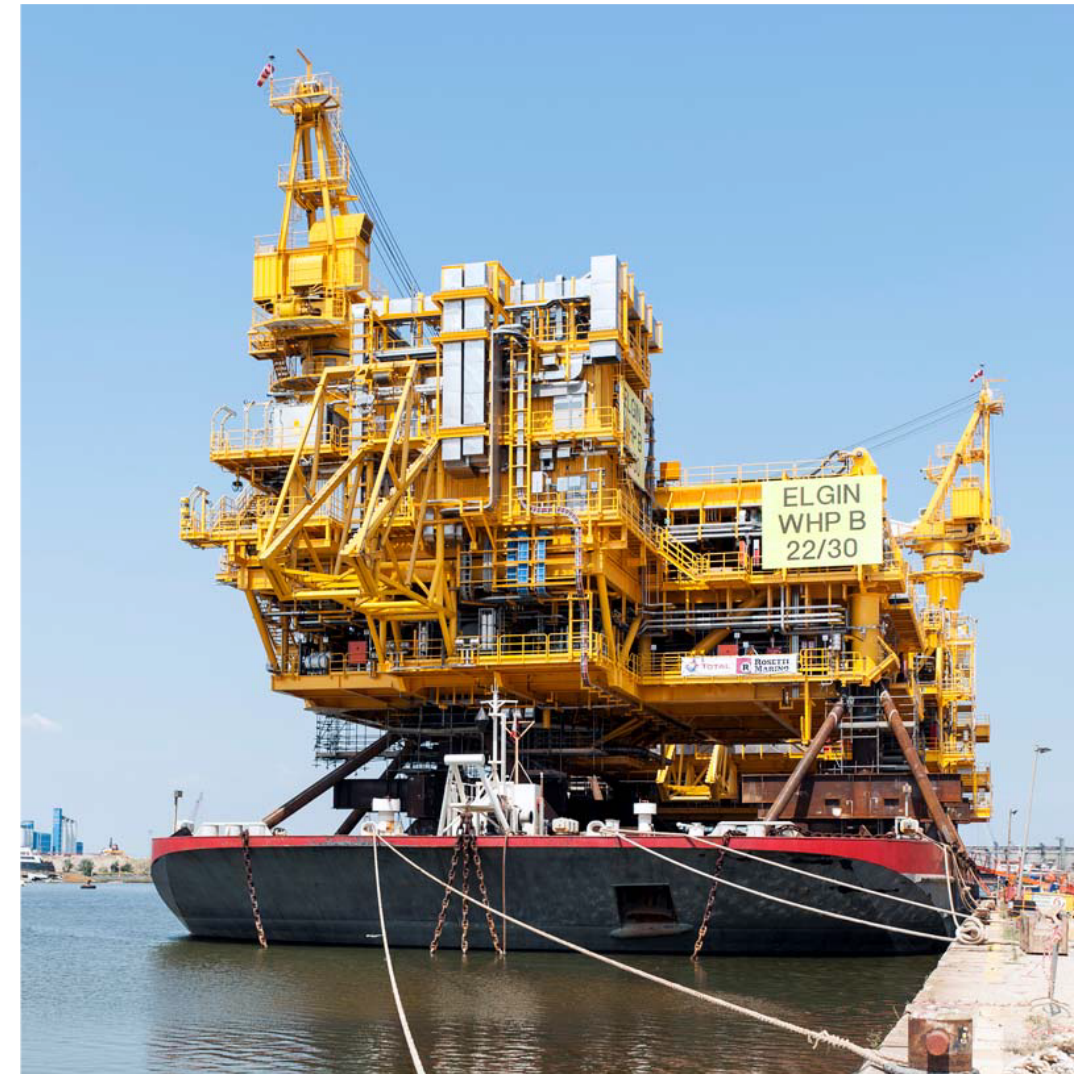
**Description**

Elgin B topside will be used in the  
extraction of gas and condensed  
crude oil, with 12 high-pressure  
and high-temperature wellheads,  
the estimated production design  
rate of Elgin B platform is of  
65,000 barrels of oil equivalent  
per day.

**Technical Data**

Topside: LxWxH: 35x35x15mt  
Weight: 2.300 tons

**Tot. Manhours: 529,000**





# DP3/DP4 MODIFICATION & REVAMPING PROJECT

## Completed

### Client

MELLITAH OIL & GAS B.V.

### Location

Bouri Field – Offshore Libya

### Main contractor

Rosetti Marino SPA

### Contract

EPIC contract on Turn Key Lump Sum basis

### Award

October 2012

### Provisional Acceptance

November 2013

### Scope of work

Engineering, Procurement, Fabrication, Transportation & Delivery, Off-shore installation, Testing, Precommissioning, Commissioning & assistance to

the Company during Start-up

### Description

Decommissioning and dismantling of Gas Sweetening Unit, Procurement of bulk material (structures, piping, E&I), construction of 3 chemical transfer pump skids & 4 chemical injection skids.

Offshore revamping works onboard two platforms, Update of the DCS/ESD/PSD system

### Technical Data

Dismantling of Unit 22 for a total weight of 240 tons (Columns, Piping and Structures)

Cables: 3000m Piping: 60t

Scaffolding more than: 3500 m3

Offshore works: 70.000 mhrs (SIMOPS)

**Tot. Manhours: 107,000**





# JASMINE DEVELOPMENT PROJECT JASMINE WHP, JLQ & JRP SUBSTRUCTURES

## Completed

**Client**  
ConocoPhillips UK

**Location**  
Central North Sea

**Main contractor**  
Rosetti Marino SPA

**Contract**  
EPC Lump Sum

**Award**  
February 2010 (WHP)  
August 2010 (JLQ & JRP)

**Ready for sail away**  
April 2011 (WHP)  
April 2012 (JLQ & JRP)

**Scope of work**  
Construction engineering,  
procurement, fabrication, load-out

and sea-fastening.

**Description**  
nr. 3 Jackets and piles

**Technical Data**  
WHP Four-legged jacket:  
Weight: 5.300 Te  
Nr. 9 skirt piles weighing 3.800 Te  
JRP Four-legged jacket:  
Weight: 5.600 Te  
Nr. 8 skirt piles weighing 3.400 Te  
JLQ Four-legged jacket:  
Weight: 3.400 Te  
Nr. 4 skirt piles weighing 1.700 Te

**Tot. Manhours - WHP: 475000**  
**Tot. Manhours - JLQ: 355000**  
**Tot. Manhours - JRP: 455000**



# KASHAGAN EXP. PROGRAM - TEMPORARY UTILITY MODULE

Completed

**Client:**  
ERSAI Caspian Contractor LLC

**Location:**  
Caspian Sea, Kazakhstan  
Sector

**Main Contractor:**  
Rosetti Marino

**Award**  
June 2007

**Ready for sail away**  
August 2008

**Type of Contract**  
EPC  
Lump sum

**Scope of Work**  
Engineering, Procurement and  
Construction of Temporary  
Utility Module (T.U.M.)

**Technical data**  
Overview of dimensions and  
capacities :  
Length o.a.: 95 m  
Breadth o.a.: 16 m  
Design draft: 3,6 m  
Height: 14 m  
Weight: 1.600 tons

Design Temperature: Suitable  
for operation all year round (-  
36 to +40 °C)



# ADDITIONAL LIVING QUARTER- KARLYGASH

Completed

**Client:**  
Agip KCO

**Location:**  
North Caspian Sea, Kazakhstan  
Sector

**Main Contractor:**  
Rosetti Marino

**Date of Contract Award:**  
November 2004

**Ready for load Out:**  
July 2006

**Overview of dimensions and  
capacities of the LQ Barge**

Length o.a.: 95 m  
Breadth o.a.: 16.40 m  
Design draft: 3,6 m3  
Displacement: 5.459 tons

**Classification**

Barge is certified by Russian  
Maritime Register of Shipping  
and Statutory regulators by RoK

**Class Notation**

Berth connected vessel (floating  
hostel) + ice class

**Scope of Work:** 180 POB Living  
Quarter (LQ) Barge suitable for  
operation all year around in the  
North Caspian Sea both in  
grounded and floating condition.  
Temporary Refuge is pressurised  
and equipped with BA system  
capable of supporting life of 180  
person in a hydrocarbon/  
toxic/explosive atmosphere for  
an endurance time of 120  
minutes.





# MISKAR COMPRESSION MODULE

Completed

**Client**  
BG TUNISIA

**Owner/Operator**  
BECHTEL Ltd (UK)

**Location**  
120 km offshore Tunisia,  
Mediterranean Sea

**Main contractor**  
Rosetti Marino SPA

**Contract**  
ePC

**Award**  
March 2003

**Ready for Load out**  
July 2004

**Scope of work**  
Construction Engineering,  
Partial Procurement,  
Fabrication, Onshore  
Construction, Onshore  
Commissioning, Load-out,  
Seafastening, Transport and  
tow.

**Description**  
Compression Module  
Size: 23x40x10 (height)  
Total weight: 1.500 tons

