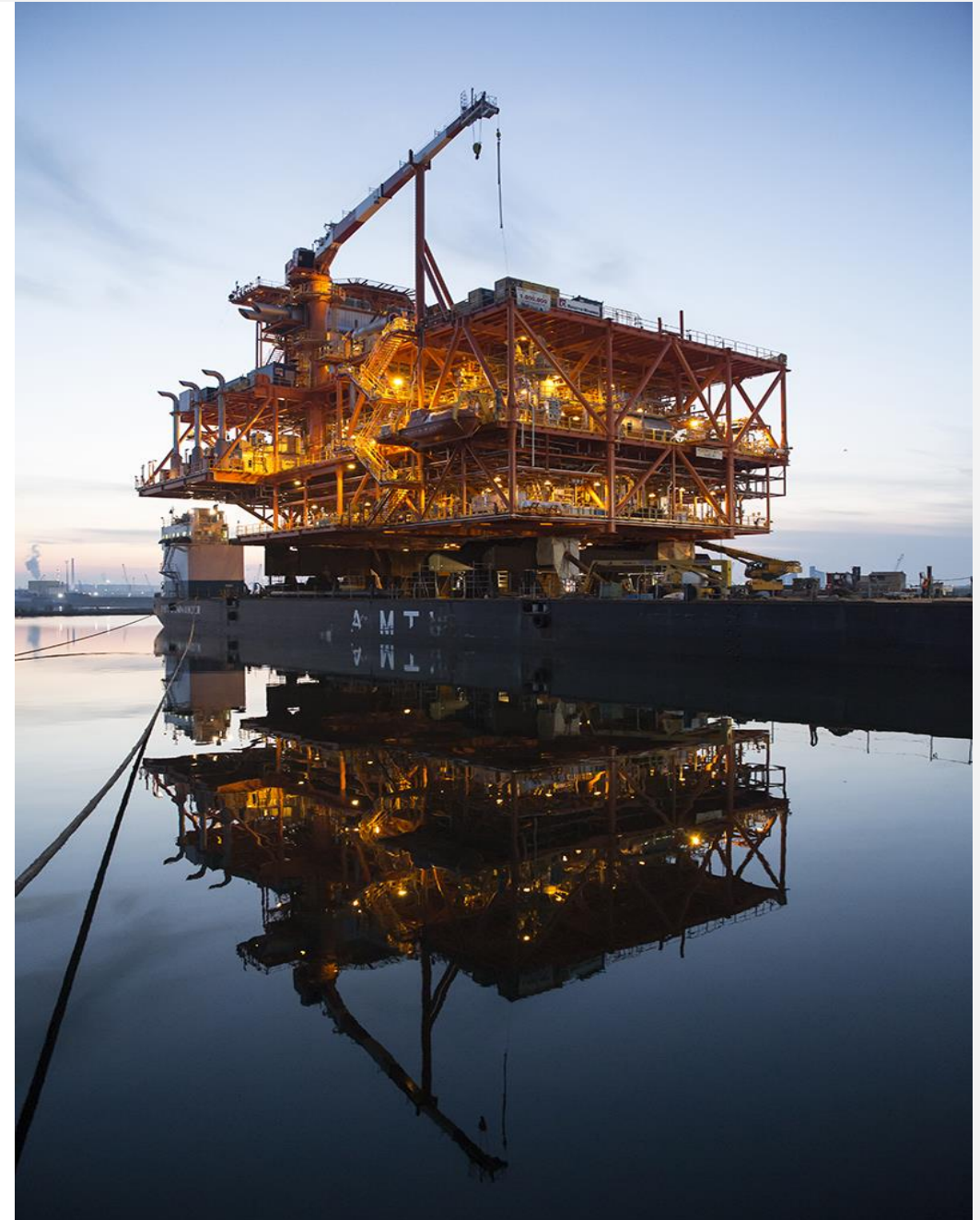




ENERGY MEETS REALITY

MAIN REFERENCES



REVAMP PROGRAM PROJECTS AT MPN FIELD LOCATIONS

Work in progress



Client
MOBIL PRODUCING NIGERIA
UNLIMITED

Location
Idoho Field, approx 50 km South
of Nigerian Coast

Main contractor
ROSETTI PIVOT LTD

Contract
Fixed Term EPC
Outline Agreement

Award
Feb 2016

Ready for offshore mobilization
October 2018

Scope of work
Project Management, HSEQ
Management, Interface
Management, Construction and
Installation Engineering,
Procurement, Onshore
Fabrication, Offshore
Demolition/Installation and Pre-
commissioning.
Scope of work - mostly like-for-

like structural and piping
replacement - covers the main
deck, cellar deck and spider deck

Technical Data
Piping
70 ton approx.

Structures
260 ton approx

Mechanical
Pig Receiver, Sump Tank

E&I
MOV's, Line Instruments
and Transmitters

160 POB [at peak]

TOLMOUNT PLATFORM EPCIC SERVICES

Work in progress

Client

HUMBER GATHERING SYSTEM
LIMITED

Location

TOLMOUNT FIELD - NORTH SEA

Main contractor

Rosetti Marino SPA

Contract

EPCIC Lump sum

Award

May 2018

Ready for sail away

April 2020

Scope of work

Project management, HSEQ
management, interface
management, design,
engineering, procurement,

construction, mechanical
completion, onshore
commissioning, load-out,
transportation, installation, Hook
Up and offshore commissioning
of Wellhead Platform and Jacket.

Technical Data

Topside: NUI - Wellhead
platform (4 wells + 2
furure), : 32x34 meters
(LxW)

Jacket: 4 legs, height 75
Meters

Weight:

Topside approx. 1800 tons
Jacket approx. 2200 tons
Piles approx. 2200 tons



TYRA FUTURE REDEVELOPMENT PROJECT

Work in progress

Client
TOTAL DENMARK A/S

Location
NORTH SEA

Main contractor
Rosetti Marino SPA

Contract
EPC Lump sum

Award
December 2017

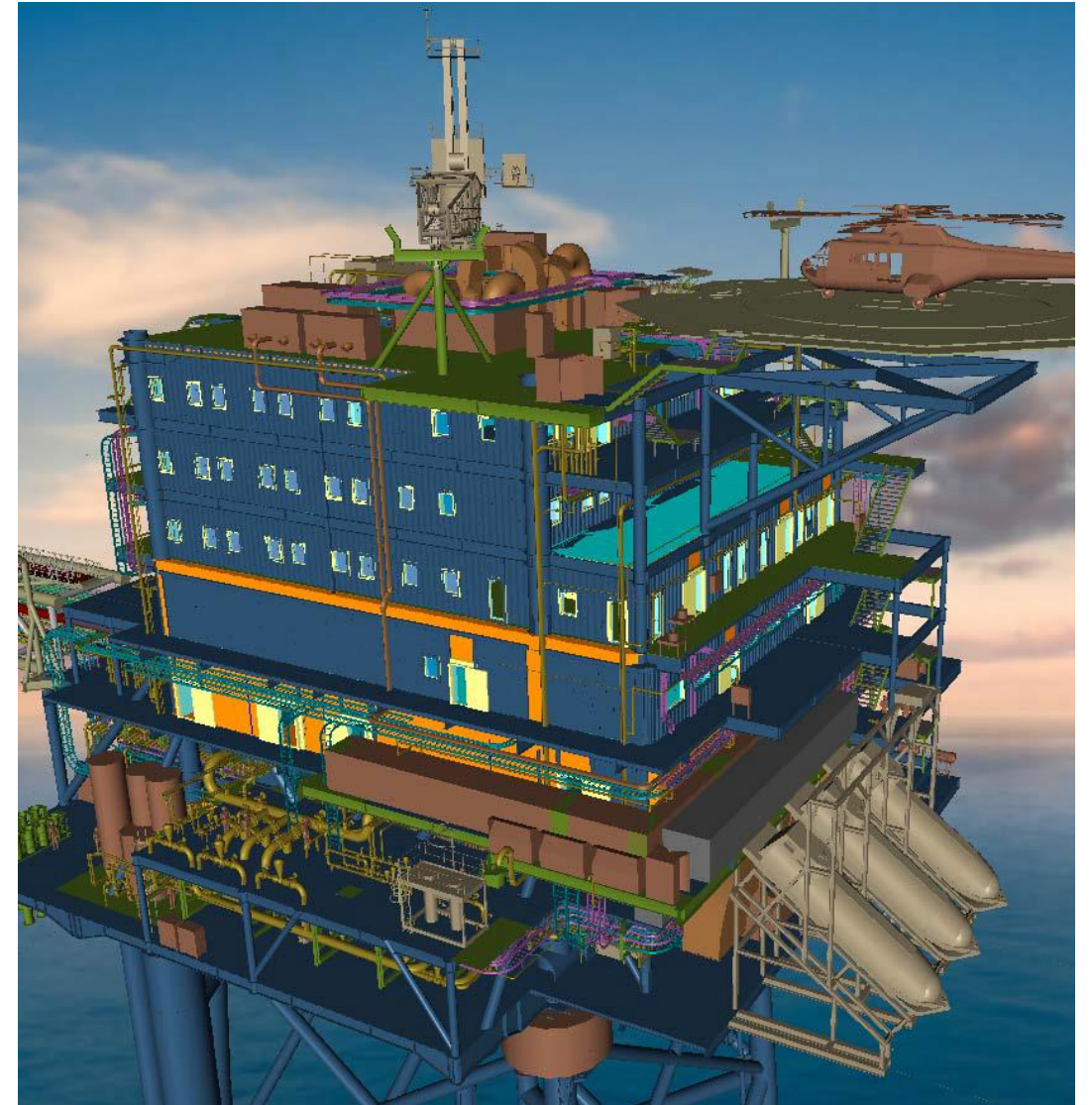
Ready for sail away
February 2021

Scope of work
Project management, HSEQ management, interface

management, design, engineering, procurement, construction, preservation, mechanical completion, onshore commissioning, load-out and sea fastening of the TEH Topside. Certification Service Contract to DNV GL and novation of ICSS (Siemens), Diesel Generators (Framo), Fire Water Pumps (Framo).

Technical Data
Topside - Living Quarters (88 POB), Utility Deck and Helideck: 39x48x35 meters (LxWxH)

Weight: approx. 5,000 tons



EPICC OF NFB OFFSHORE ACCOMMODATION EXPANSION PROJECT

Work in progress

Client
QATARGAS OPERATING
COMPANY LIMITED

Location
NORTH FIELD BRAVO

Main contractor
Rosetti Marino SPA

Contract
Lump sum

Award
April 2017

Ready for sail away
February 2020

Scope of work
Conceptual and Detail Design,
Procurement, Installation,
Construction, Commissioning,

Brownfield

Technical Data

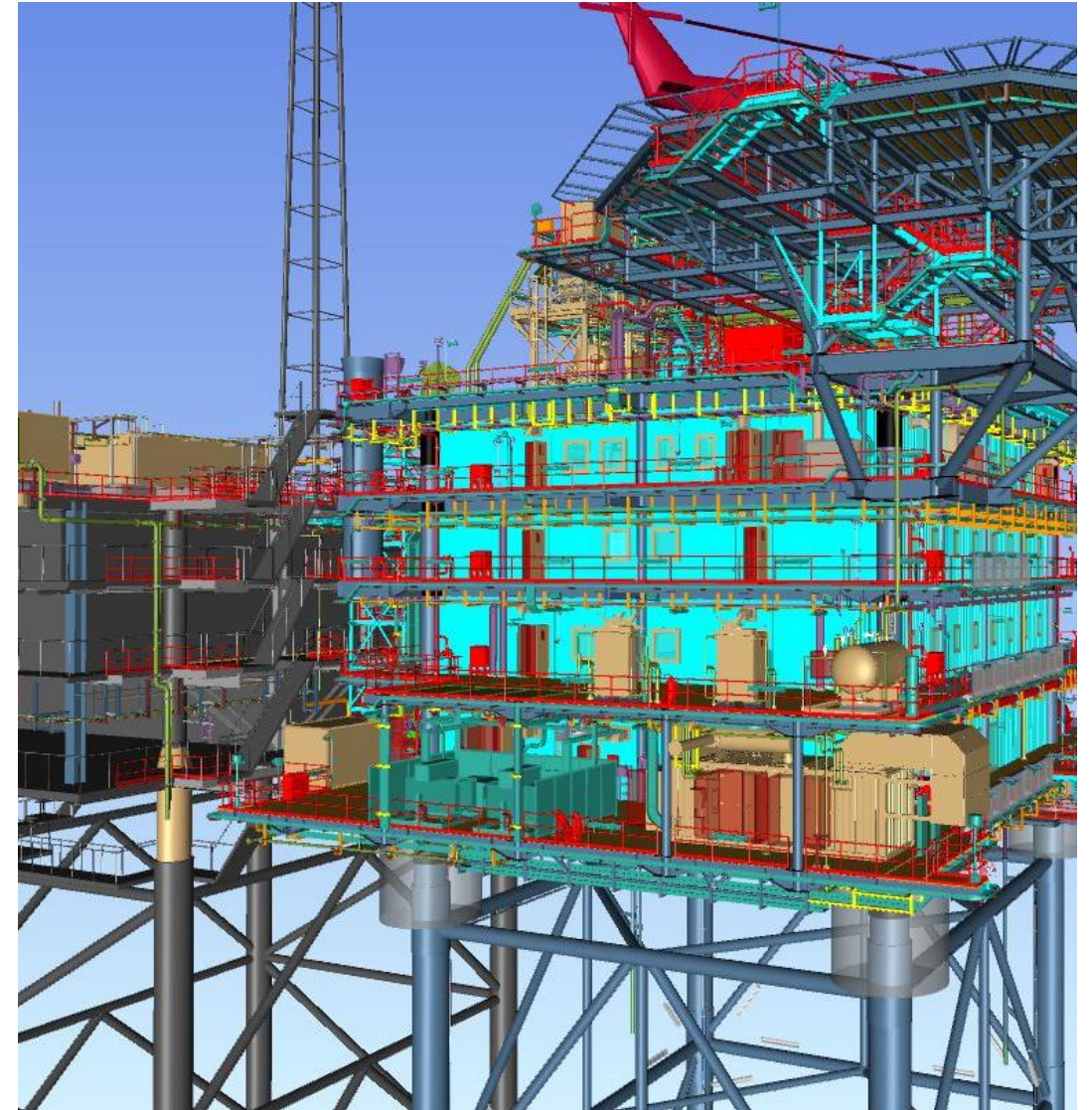
No. 1 ALQ Jacket (N.4 legs;
H=59mt)
total weight: 754 t

No. 4 ALQ Piles
(D=1,524 mt – thk = 8-50mm;
L=163,7mt)
total weight: 1,302 t

No. 1 ALQ Topside (N.5 levels)
total weight: 2,253 t

No. 1 ALQ Helideck (helipad in
steel structural)
total weight: 174 t

No. 6 Bridges (from LQ to new
ALQ: L= 10mt)
total weight: 37 tons



BAHR ESSALAM PHASE II TOPSIDE REVAMPING

Completed



Client

Mellitah Oil & Gas B.V.

Location

Sabratha Platform – Block NC41

Main contractor

Technip FMC

Contract

Lump sum

Award

April 2017

Ready for start up

February 2018

Scope of work

Construction Engineering,
Procurement of bulk material,
onshore fabrication, offshore
construction activities & Floatel

Technical Data

No. 1 ALQ Jacket (N.4 legs;
H=59mt)

Total weight: 754 t

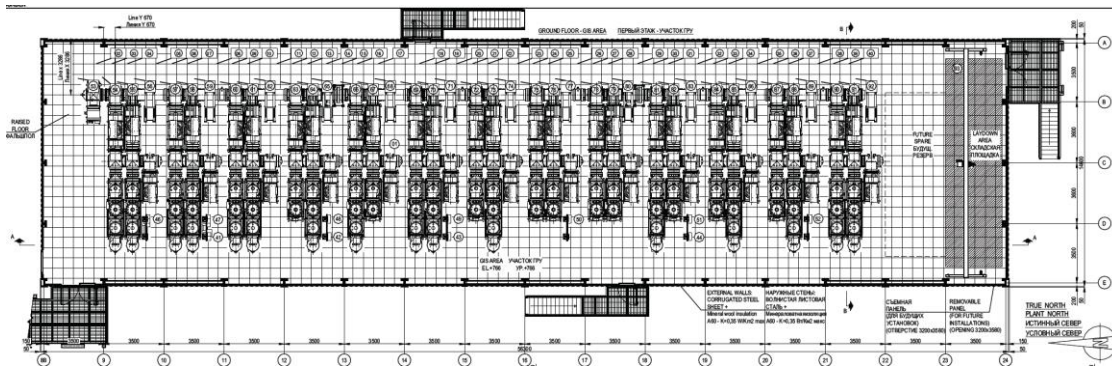
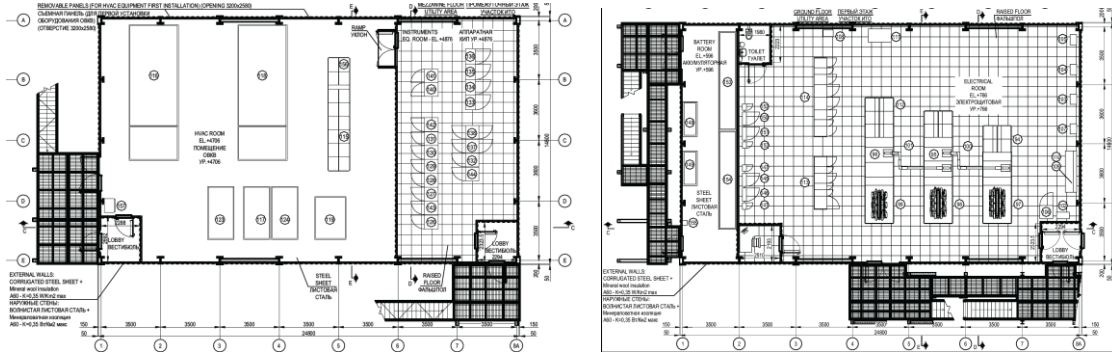
No. 4 ALQ Piles

(D=1,524 mt – thk = 38-
50mm; L= 163,7mt)

Total weight: 1,302 t

110kV GIS MAIN SUBSTATION 52-SU-3301

Completed



Client
GE Grid Solutions

Final client
TENGIZCHEVROIL

Location
KAZAKHSTAN

Main contractor
Rosetti Marino SPA

Contract
EPC/Lump Sum

Award
October 2016

Ready for sail away
August 2018

Project
Future Growth Project, Wellhead
Pressure Management Project
(FGP/WPMP)

Scope of work
Construction Engineering,
Structure and Architectural
Procurement and Fabrication,
Load out activities of a 10kV GIS
Substation

Technical Data
BUILDING DIMENSION [m]
GIS MODULE
56,3 x 14,60 x 8,644 (h)
UTILITY MODULE
24,8 x 14,60 x 8,644 (h)

BUILDING TOT WEIGHT
[ton] 1300

MODULAR SUBSTATION 51-SU-33004

Completed

Client
GE Grid Solutions

Final client
TENGIZCHEVROIL

Location
KAZAKHSTAN

Main contractor
Rosetti Marino SPA

Contract
EPC/Lump Sum

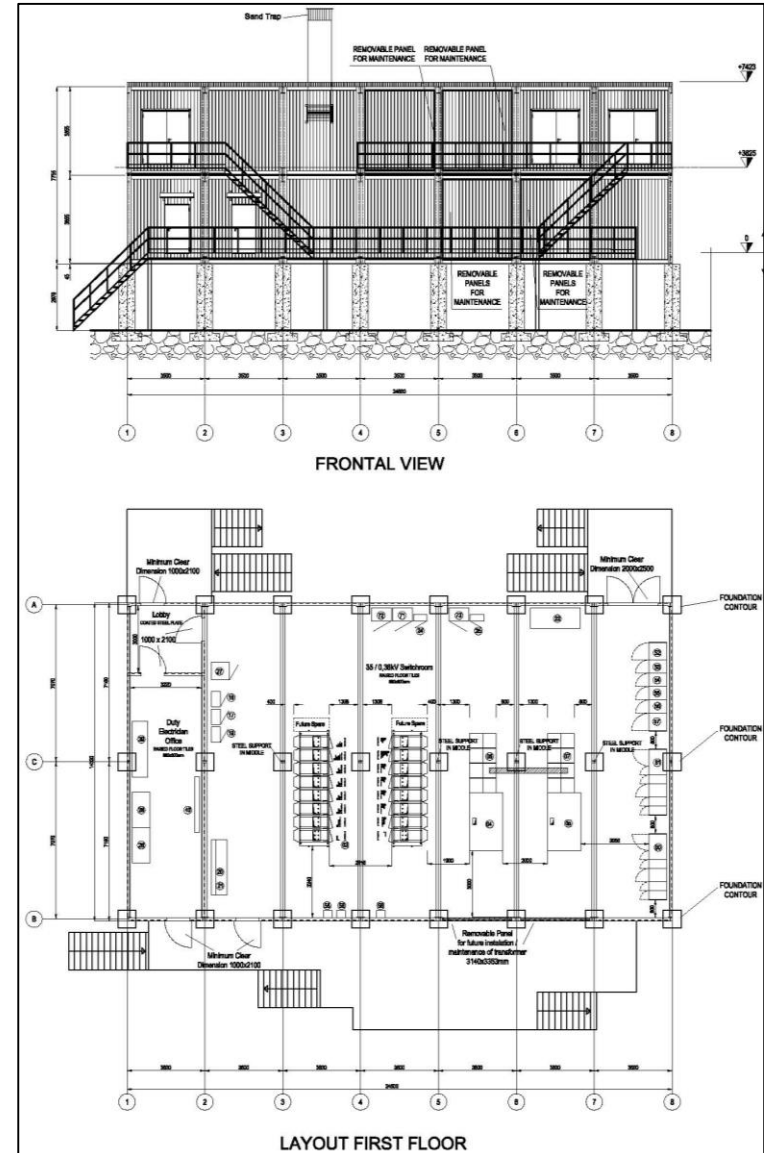
Award
January 2016

Ready for sail away
May 2017

Project
Future Growth Project, Wellhead
Pressure Management Project
(FGP/WPMP)

Scope of work
Detail design, Construction
Engineering, Procurement,
Fabrication, Commissioning

Technical Data
BUILDING DIMENSION [m] 24,5 (l)
x 14.14 (w) x 7,9 (h)
BUILDING WEIGHT [ton] 414
The proposed Substation is
supplied as subdivided in N.14
modules of indicative dimensions
(m) 3,5 (W) x14,2 (L) x 3,9 (H)



EPCI FOR A NEW JACKET FOR SOUTH PARS

Completed

Client

PETRO PAYDAR IRANIAN OIL COMPANY

Location

IRAN – SOUTH PARS 13 FIELD

Main contractor

Rosetti Marino SPA

Contract

Fixed UR

Award

April 2017

Ready for sail away

August 2017

Offshore installation

September 2017

Scope of work

Conceptual and Detail Design, Procurement, Construction, Transportation and Installation of Jacket SPD13A

Technical Data

Nr.1 four-legged jacket with well-head module and appurtenances

Total weight: 1.800 t

Nr.4 piles (inside jacket legs)

Total weight: 1.400 t



WHP3 STRUCTURAL MODIFICATIONS – NENÈ OIL FIELD

Completed



Client
ENI CONGO

Location
RAVENNA - ITALY

Main contractor
Rosetti Marino SPA

Contract
EPC

Award
June 2016

Ready for sail away
November 2016

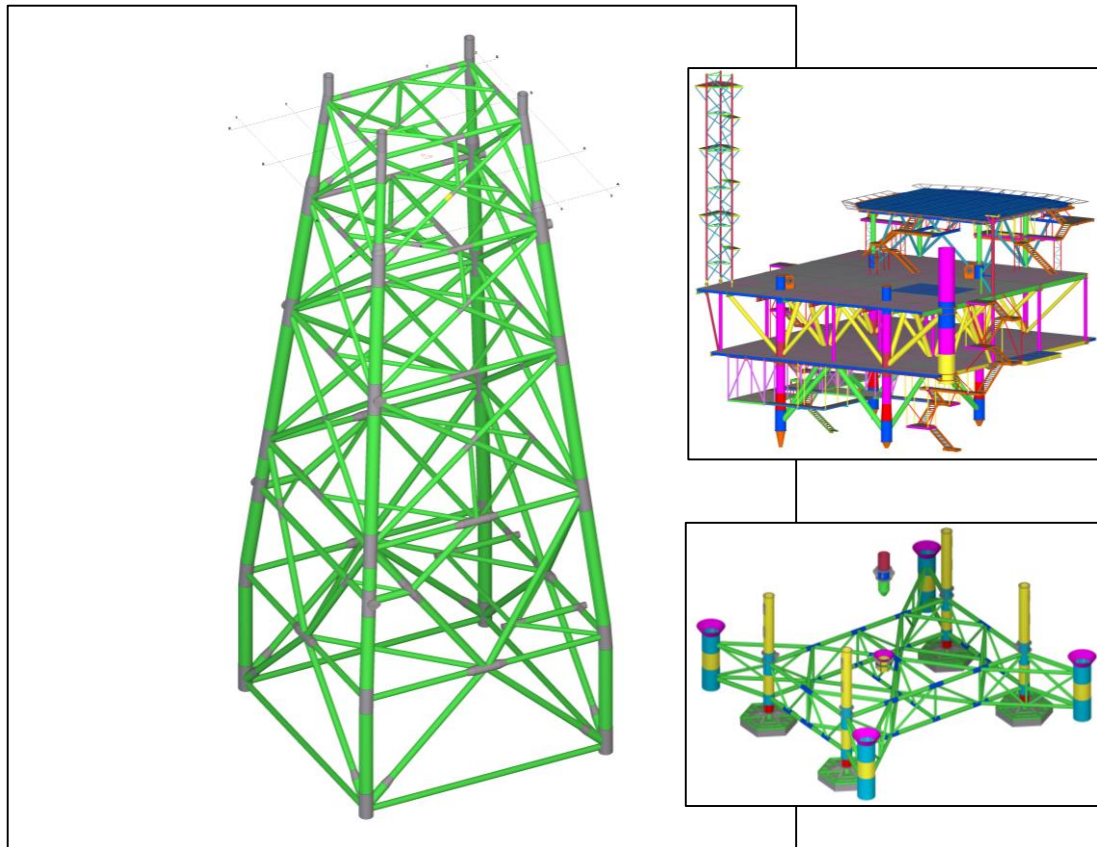
Scope of work
Detail design, Procurement,
Construction and commissioning
of WHP3 Platform Jacket and
Deck for Nenè Oil Field - Congo

Technical Data
Steel Structures: 650 Tons

Painting: 7,600 Sqm.

ZOHR PROJECT

Completed



Client
PETROBEL

Location
Offshore Egypt – Zohr Field

Main contractor
Rosetti Marino SPA

Contract
Unit rates

Award
April 2016

Ready for sail away
Batches between June -
November 2016

Scope of work
Construction Engineering,
Procurement and Fabrication
activities of steel structures for
Jacket, Foundation
Piles, Pile Guide Frame (PGF) and
Deck for ZOHR Central Control

Platform.

Technical Data
Nr. 1 four legged Jacket,
Nr. 1 topside, nr.1 PGF structure
and nr.4 foundation piles.
Jacket 95 m (H) - Weight: 1714
Tons
Deck - Weight: 1039 Tons
Piles - Weight: 927 Tons
PGF - Weight: 360 Tons

MOSE I COMPLETION PROJECT

Completed

Client
Consorzio Venezia Nuova

Location
Venice – Italy

Main contractor
Rosetti Marino SPA

Contract
Cost plus fee

Award
Feb 2016

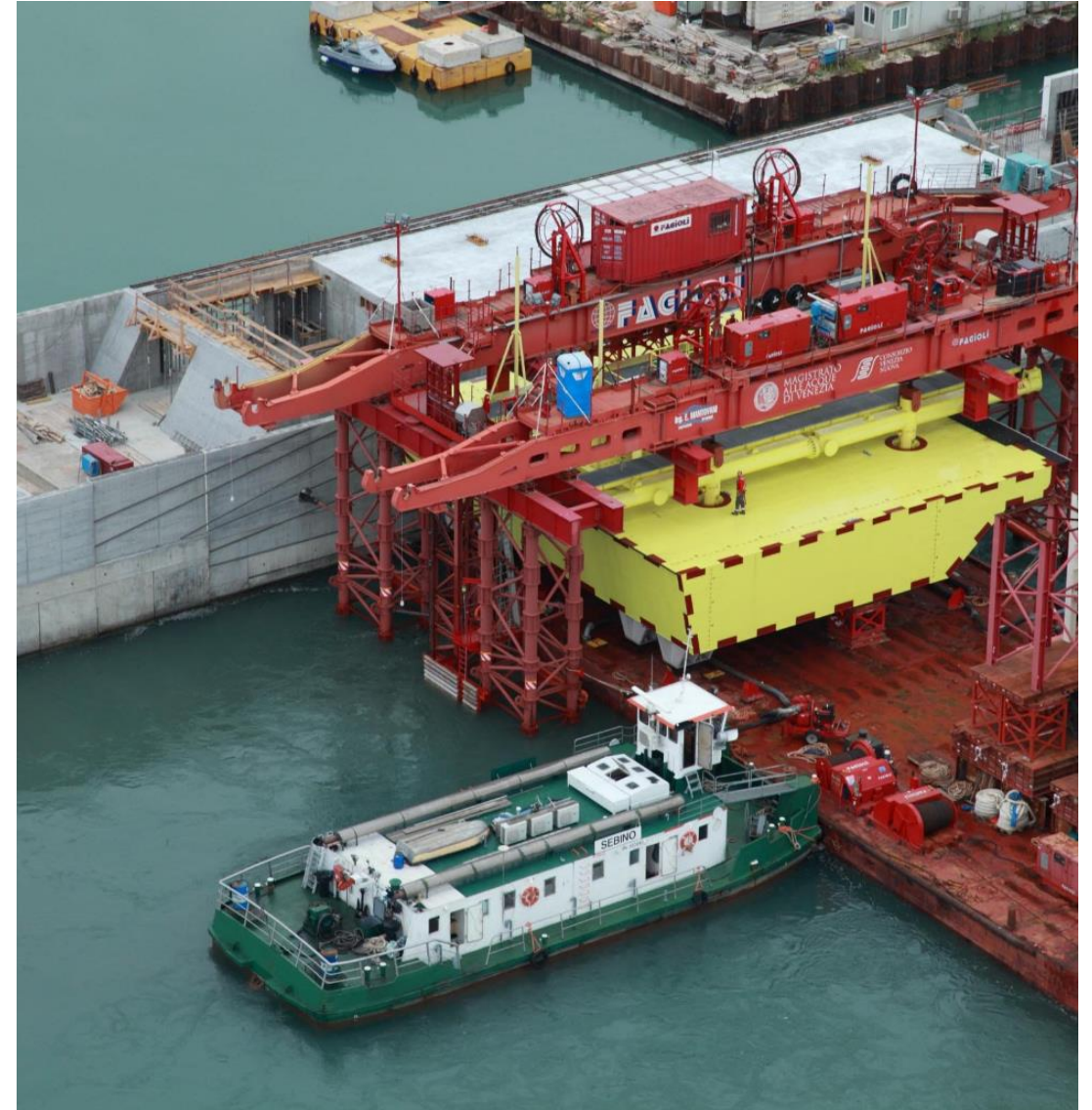
Duration
1 year

Scope of work
Structural modifications,
commissioning and Start-up of 4
leg jack up installation vessel

specifically designed for the
installation and maintenance of
dams for Venice. Entire system is
called MOSE.

Modifications on structures and
hydraulic systems.
Technical assistance for
Mechanical Completion,
Pre-comm and commissioning.
Operations and Maintenance.
Offshore Tests in November 2016;

Operations and maintenance
program to be agreed (most
probably a 3 year period starting
from January 2017)



ABU QIR DEVELOPMENT PROJECT

NAQ Q PII PLATFORM

Completed

Client
Abu Qir Petroleum

Location
Offshore Egypt – North Abu Qir
Field

Main contractor
Petrojet

Nominated Sub.
Rosetti Marino SPA

Contract
EP/Lump Sum

Award
October 2014

Ready for sail away
July 2016

Scope of work
Engineering and Procurement
activities.

Technical Data
nr. 1 four legged Jacket,
nr. 1 wellhead module and
topside, nr. 6 gas/oil wells (4 + 2
future)
Jacket: 40,5 m (H) –Weight: 550
Tons
Deck: Weight: 2040 Tons
Piles: Weight: 720 Tons



LER SUBSTATIONS - Future Growth Project, Wellhead Pressure Management Project (FGP/WPMP)

Completed

Client
SKEMA SpA

Final Client
TENGIZCHEVROIL

Location
KAZAKHSTAN

Main contractor
Rosetti Marino SPA

Contract
EPC/Lump sum

Award
October 2014

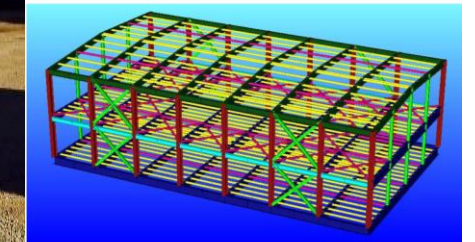
Ready for sail away
December 2016

Scope of work
Construction Engineering,
Procurement, Fabrication,
Transportation, Commissioning
and Start-up Assistance.

Technical Data
110 kV Main substation
Weight: 500 Tons
110 kV Core substation
Weight: 310 Tons

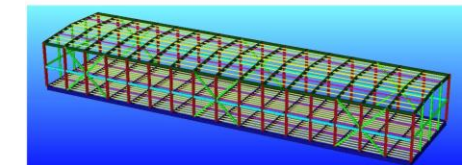


Main Substation Module for GIS.



Main dimension: 56,3 x 14,6 x 8,7 m

Main Substation Module for Utility.



DP4 – FPSO INTERFACE WORKS

Completed



Client

STX Offshore & Shipbuilding

Finale Client

MELLITAH OIL & GAS B.V.

Location

Bouri Field - Offshore Libya

Main contractor

Rosetti Marino SPA

Contract

EPIC contract on Turn Key Lump Sum basis

Award

October 2014

Ready for sail away

February 2016

Scope of work

Project Management,
Engineering (Basic Design review,
detailed engineering

development & Risks assessment), Procurement & Inspection Fabrication, Offshore installation and Hook up, Dismantling, installation and Hook up, recommissioning & Commissioning activities.

Description

New FPSO will be installed near the platform . Modification and interface works on the platform to be done for new risers connection (HV electrical power cable and 16" inc. process piping)

Technical Data

Main new equipment:
Transformer, UTA, Switchboard, fiber optic, Control&Safety system extension, ESDV.
E&I, mechanical, structural and piping works to perform.

GOLIAT PROJECT

GOLIAT FPSO

Completed

Client

KOSSCO LTD (Owner: ENI Norge)

Location

Ulsan, South Korea (1° phase)
Norway, Barents sea (2° phase)
Hook up)

Main contractor

Rosetti Marino SPA

Contract

MS
Daily rates

Award

January 2014

Ready for sail away

1st Quarter 2016

Hook up

In progress

Scope of work

Provision of Services for
mechanical completion activities
on Goliat FPSO (Precommissioning
& commissioning
– all disciplines).

Technical Data

Weight approx. 60.000 Tons,
diameter 120m, height 76m,
FPSO with oil storage, sea
ballasting system, Gas Turbine
Generation and Living quarter
Manhours 1° phase: 82.795
Manhours 2° phase: 26.977
(as of 30 Nov. 2015)



DRILLING RIG CONVERSION TO WHP PLATFORM

Completed

Client
LOTOS PETROBALTIC

Location
Poland

Main contractor
Rosetti Marino SPA

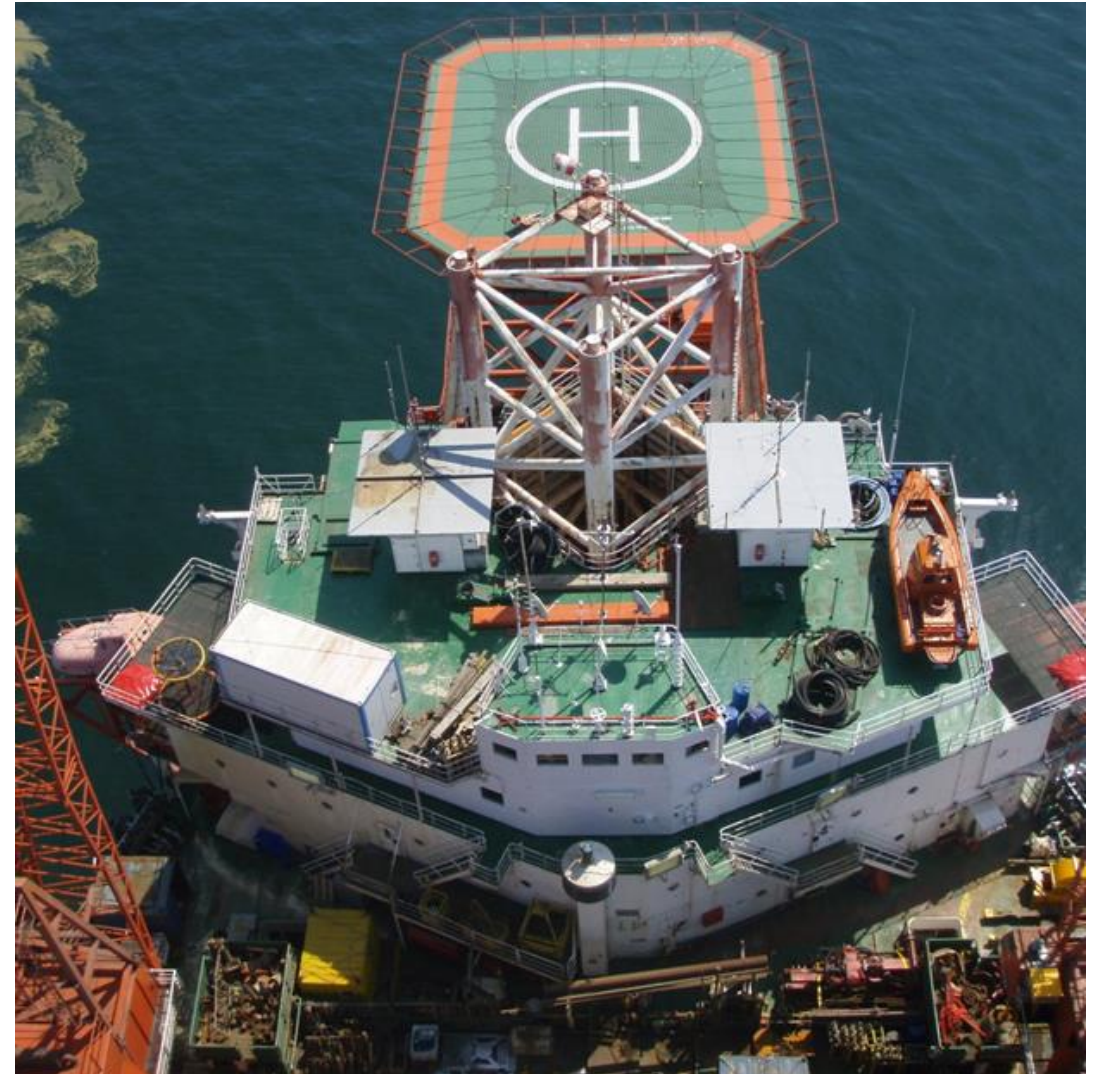
Contract
EPMS

Award
August 2013

Ready for sail away
November 2015

Scope of work
Conversion of drilling rig from
MODU to production center.
Engineering, Procurement
services, management and HUC
works.

Technical Data
Weight: Approx. 3.000 tons
new modules and removal
and reconversion of drilling rig
Hull and legs



MARLIN DEVELOPMENT PROJECT

Completed

Client
FOXTROT INTERNATIONAL LDC

Location
Offshore Ivory Coast

Main contractor
Rosetti Marino SPA

Contract
EPC

Award
December 2012

Ready for sail away
Jacket & piles: August 2014
Deck: March 2015

Scope of work
Engineering, Procurement and supply of all material and

equipment, prefabrication, fabrication and assembly, precommissioning, commissioning load out, site hook-up, site commissioning and assistance for start-up of:
One (1) 4-legged jacket, four (4) skirt piles, A Four (4) deck level Topside and a 20 POB Living Quarter

Technical Data
Topside: LxWxH 54x31x20
Weight: 4.500 tons
Jacket: H 118 m
Weight: 3.500 tons
(+ 1.300 tons for piles)
Living Quarter: 20 POB



ELETTRA AND FAUZIA PLATFORMS

Completed

Client
ENI SPA

Location
Adriatic Sea

Main contractor
Rosetti Marino SPA

Contract
EPC

Award
April 2013

Ready for sail away
April 2014

Scope of work
Engineering, procurement,

construction, load-out and sea fastening, transportation to site, hook up, commissioning, preparation of the platform and assistance during dewatering operations, start up and performance tests of Elettra and Fauzia decks.

Technical Data
Deck : 20x17x22 (LxWxH)
Weight:
Elettra – Approx. 450 tons
Fauzia – Approx 610 tons



IKA & IVANA FIELD DEVELOPMENT PROJECT

IKA JZ PLATFORM

Completed

Client

Inagip doo

Location

Offshore Adriatic Sea, Croatian
Sector

Main contractor

Rosetti Marino SPA

Contract

EPC

Award

November 2012

Completion date

July 2014

Scope of work

Engineering, Procurement,
Fabrication, Transportation,
Offshore Hook-up and
Commissioning and Start-up
Assistance.

Technical Data

Deck: LxWxH 54x31x20
Weight: 510 tons
Wellhead module: 78 tons
Three-legged jacket: H 72 m
Weight: 735 tons
Piles: 690 tons
Conductors: 242 tons



CLIPPER PLQ UPGRADE PROJECT

Completed

Client
SHELL UK

Location
North Sea UKCS

Main contractor
Rosetti Marino SPA

Contract
EPC

Award
August 2012

Ready for sale away
June 2014

Scope of work
Engineering, procurement,

fabrication, testing, onshore commissioning, load-out and sea fastening of the Clipper Accommodation Module with integral Utility Deck and Helideck, the link bridge, the jacket and piles.

Technical Data

Topsides - Living Quarter (84 POB), Utility Deck and helideck: 50x25x25 (LxWxH)
Four-legged jacket (weight: 800 tons)
Weight: Approx. 3000 tons



WEST FRANKLIN PROJECT

Completed

Client

ELF EXPLORATION UK LTD / TOTAL Group

Location

North Sea, UKCS (240 Km East of Aberdeen)

Main contractor

Rosetti Marino SPA

Contract

EPCI

Award

July 2011

Ready for sail away

2013

Scope of work

Engineering, Procurement, Construction, Installation, Hook-up and Commissioning of Topsides for the West Franklin platform

Description

West Franklin topside will be used in the extraction of gas and condensed crude oil, with 9 high pressure and high-temperature wellheads, the estimated production design rate of West Franklin platform is 40,000 barrels of oil equivalent per day.

Technical Data

Topside: LxWxH: 40x40x20 mt
Weight: 3.300 tons



ELGIN B PROJECT

Completed

Client

ELF EXPLORATION UK LTD / TOTAL Group

Location

North Sea, UKCS (240 Km East of Aberdeen)

Main contractor

Rosetti Marino SPA

Contract

EPCI

Award

July 2011

Ready for sail away

June 2013

Scope of work

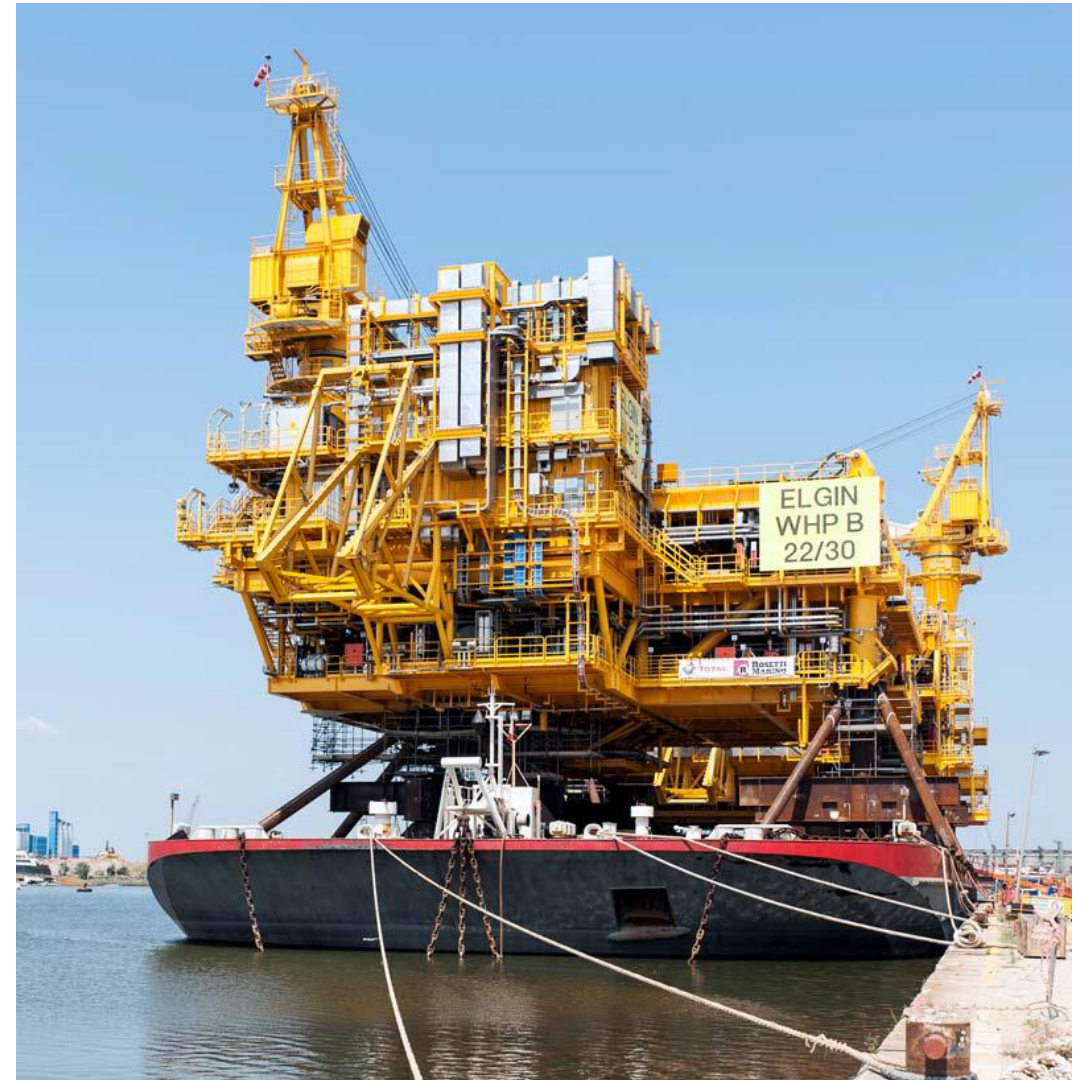
Engineering, Procurement, Construction, Installation, Hook-up and Commissioning of Topsides for the Elgin B Platform

Description

Elgin B topside will be used in the extraction of gas and condensed crude oil, with 12 high-pressure and high-temperature wellheads, the estimated production design rate of Elgin B platform is of 65,000 barrels of oil equivalent per day.

Technical Data

Topside: LxWxH: 35x35x15mt
Weight: 2.300 tons



DP3/DP4 MODIFICATION & REVAMPING PROJECT

Completed

Client

MELLITAH OIL & GAS B.V.

Location

Bouri Field – Offshore Libya

Main contractor

Rosetti Marino SPA

Contract

EPIC contract on Turn Key Lump
Sum basis

Award

October 2012

Provisional Acceptance

November 2013

Scope of work

Engineering, Procurement,
Fabrication, Transportation &
Delivery, Off-shore installation,
Testing, Precommissioning,

Commissioning & assistance to
the Company during Start-up

Description

Decommissioning and dismantling
of Gas Sweetening Unit,
Procurement of bulk material
(structures, piping, E&I),
construction of 3 chemical transfer
pump skids & 4 chemical injection
skids.
Offshore revamping works
onboard two platforms, Update of
the DCS/ESD/PSD system

Technical Data

Dismantling of Unit 22 for a total
weight of 240 tons (Columns,
Piping and Structures)
Cables: 3000m Piping: 60t
Scaffolding more than: 3500 m³
Offshore works: 70.000 mhrs
(SIMOPS)



JASMINE DEVELOPMENT PROJECT JASMINE WHP, JLQ & JRP SUBSTRUCTURES

Completed

Client
ConocoPhillips UK

Location
Central North Sea

Main contractor
Rosetti Marino SPA

Contract
Lump Sum

Award
February 2010 (WHP)
August 2010 (JLQ & JRP)

Ready for sail away
April 2011 (WHP)
April 2012 (JLQ & JRP)

Scope of work
Construction engineering,
procurement, fabrication, load-out
and sea-fastening.

Description
nr. 3 Jackets and piles

Technical Data
WHP Four-legged jacket:
Weight: 5.300 Te
Nr. 9 skirt piles weighing 3.800 Te
JRP Four-legged jacket:
Weight: 5.600 Te
Nr. 8 skirt piles weighing 3.400 Te
JLQ Four-legged jacket:
Weight: 3.400 Te
Nr. 4 skirt piles weighing 1.700 Te

